



AD-170SE Parts Manual

Phase 7 Microprocessor Models

2002

American Dryer Corporation
88 Currant Road
Fall River, MA 02720-4781
Telephone: (508) 678-9000 / Fax: (508) 678-9447
e-mail: techsupport@amdry.com
www.amdry.com

Retain This Manual In A Safe Place For Future Reference

American Dryer Corporation products embody advanced concepts in engineering, design, and safety. If this product is properly maintained, it will provide many years of safe, efficient, and trouble free operation.

ONLY qualified technicians should service this equipment.

OBSERVE ALL SAFETY PRECAUTIONS displayed on the equipment or specified in the installation manual included with the dryer.

The following “**FOR YOUR SAFETY**” caution **must be** posted near the dryer in a prominent location.

FOR YOUR SAFETY

Do not store or use gasoline or other flammable vapors and liquids in the vicinity of this or any other appliance.

POUR VOTRE SÉCURITÉ

Ne pas entreposer ni utiliser d'essence ni d'autres vapeurs ou liquides inflammables à proximité de cet appareil ou de tout autre appareil.

We have tried to make this manual as complete as possible and hope you will find it useful. **ADC** reserves the right to make changes from time to time, without notice or obligation, in prices, specifications, colors, and material, and to change or discontinue models.

Important

For your convenience, log the following information:

DATE OF PURCHASE _____ **MODEL NO.** AD-170SE

RESELLER'S NAME _____

Serial Number(s) _____

Replacement parts can be obtained from your reseller or the **ADC** factory. When ordering replacement parts from the factory, you can FAX your order to **ADC** at (508) 678-9447 or telephone your order directly to the **ADC** Parts Department at (508) 678-9000. Please specify the dryer **model number** and **serial number** in addition to the **description** and **part number**, so that your order is processed accurately and promptly.

The illustrations on the following pages may not depict your particular dryer exactly. The illustrations are a composite of the various dryer models. Be sure to check the descriptions of the parts thoroughly before ordering.

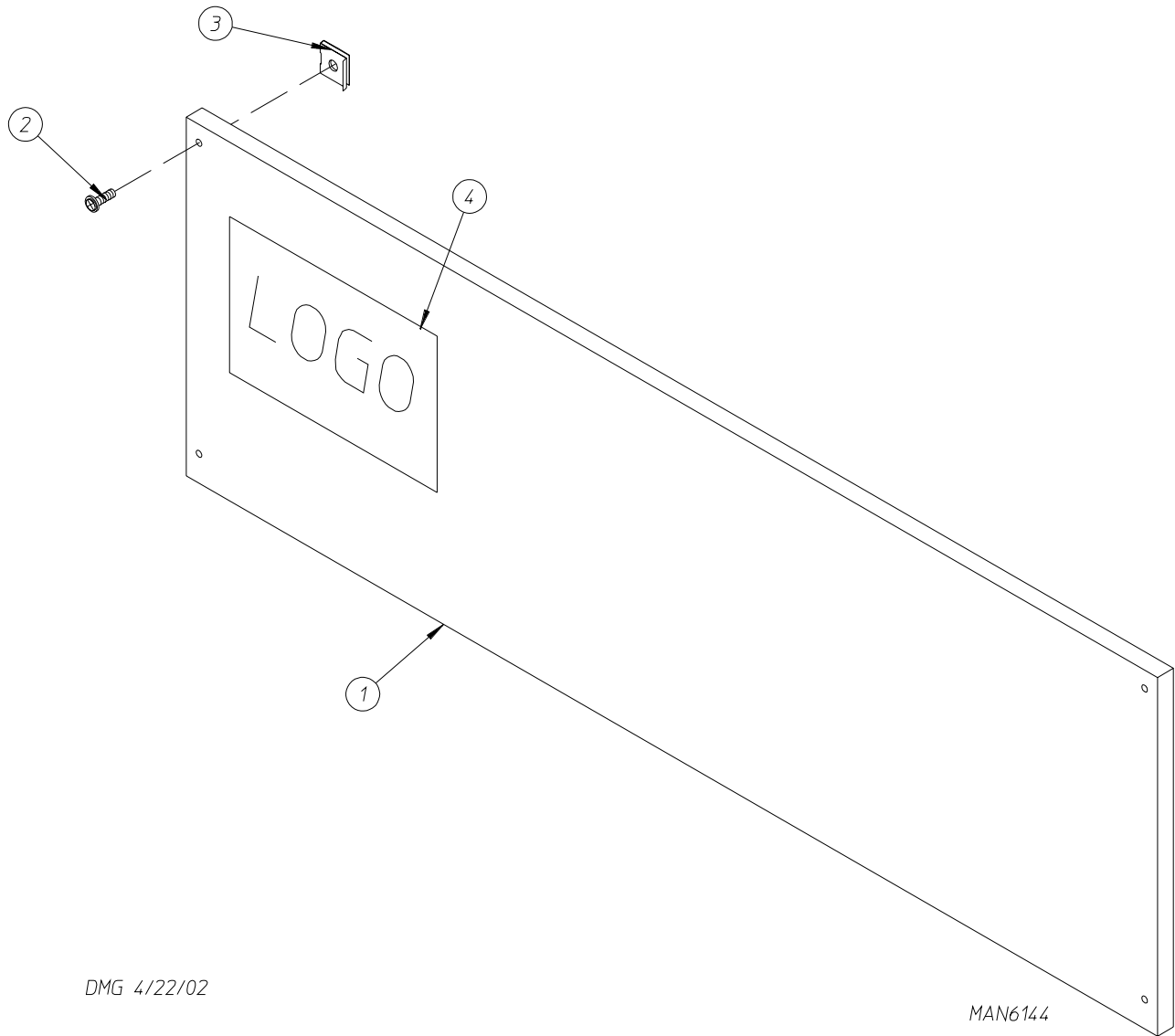
“IMPORTANT NOTE TO PURCHASER”

Information **must be** obtained from your local gas supplier on the instructions to be followed if the user smells gas. These instructions **must be** posted in a prominent location near the dryer.

Table of Contents

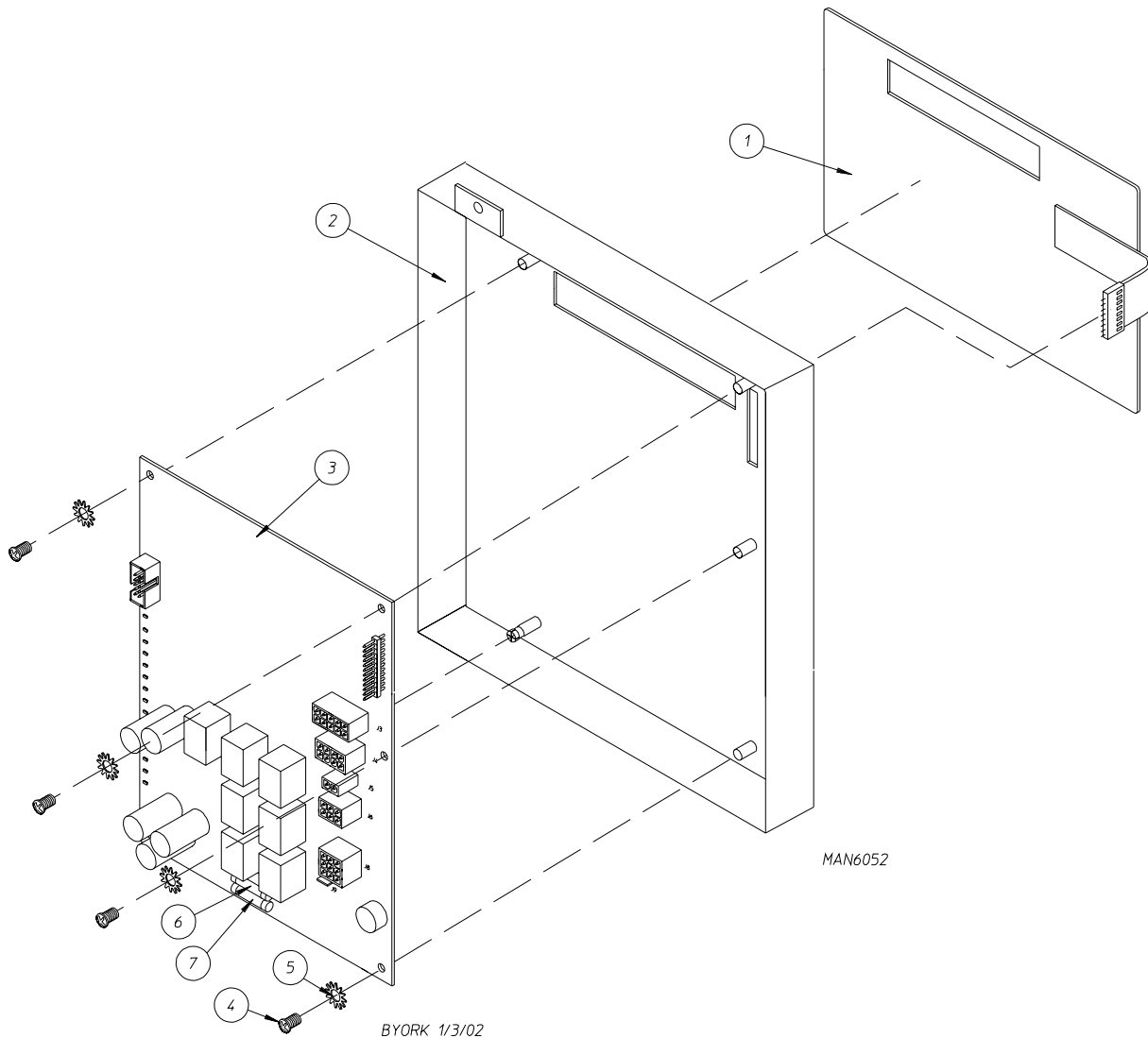
Control Door Assembly	3
Phase 7 Microprocessor Control Panel Assembly	4
Cold Rolled Steel (CRS) Main Door Assembly	5
Front Panel/Main Door Assemblies	6
Main Door Switch Assembly	7
Lint Door Assembly	8
Lint Drawer/Lint Drawer Switch Box Assemblies	9
Microprocessor Temperature Sensor Bracket Assembly	10
Basket (Tumbler)/Support Assemblies	11
Basket (Tumbler) Bearing Mount Assembly	12, 13
Idler Bearing Mount Assembly	14, 15
Direct Spark Ignition (DSI) Burner Assembly	16, 17
T.E.F.C. Basket (Tumbler) Motor Mount Assembly	18, 19
Blower Motor Mount Assembly	20, 21
Fan Shaft Mount Assembly	
For Gas Models Only	22, 23
Fan Shaft Mount Assembly	
For Steam Models Only	24, 25
Sail Switch Assembly	26, 27
Microprocessor Reversing Contactor Mounting Panel Assembly	
For 208-240V Transformers	28, 29
Microprocessor Reversing Contactor Mounting Panel Assembly	
For 380-416V Transformers	30, 31
Microprocessor Reversing Contactor Mounting Panel Assembly	
For 460-480V Transformers	32, 33
Steam Damper Assembly	34
Top Console Assembly	35

Pneumatic Valve Assembly	
For Gas Models Only	36
Pneumatic Valve Assembly	
For Steam Models Only	37
Air Jet Assembly	38
Back Guard Assemblies	39
Direct Spark Ignition (DSI) Burner Assembly Specifications	40
Step Down Transformer Application Listing	41
Additional Parts Available	42



<u>Illus. No.</u>	<u>Part No.</u>	<u>Qty.</u>	<u>Description</u>
1*	883860	1	Control Door (for gas models Only)
	883861	1	Short Control Door (for steam models Only)
2	154011	4	#10-32 Multi-Thread U-Nut
3	150321	4	#10-32 x 1/2" Phillips Head Machine Screw

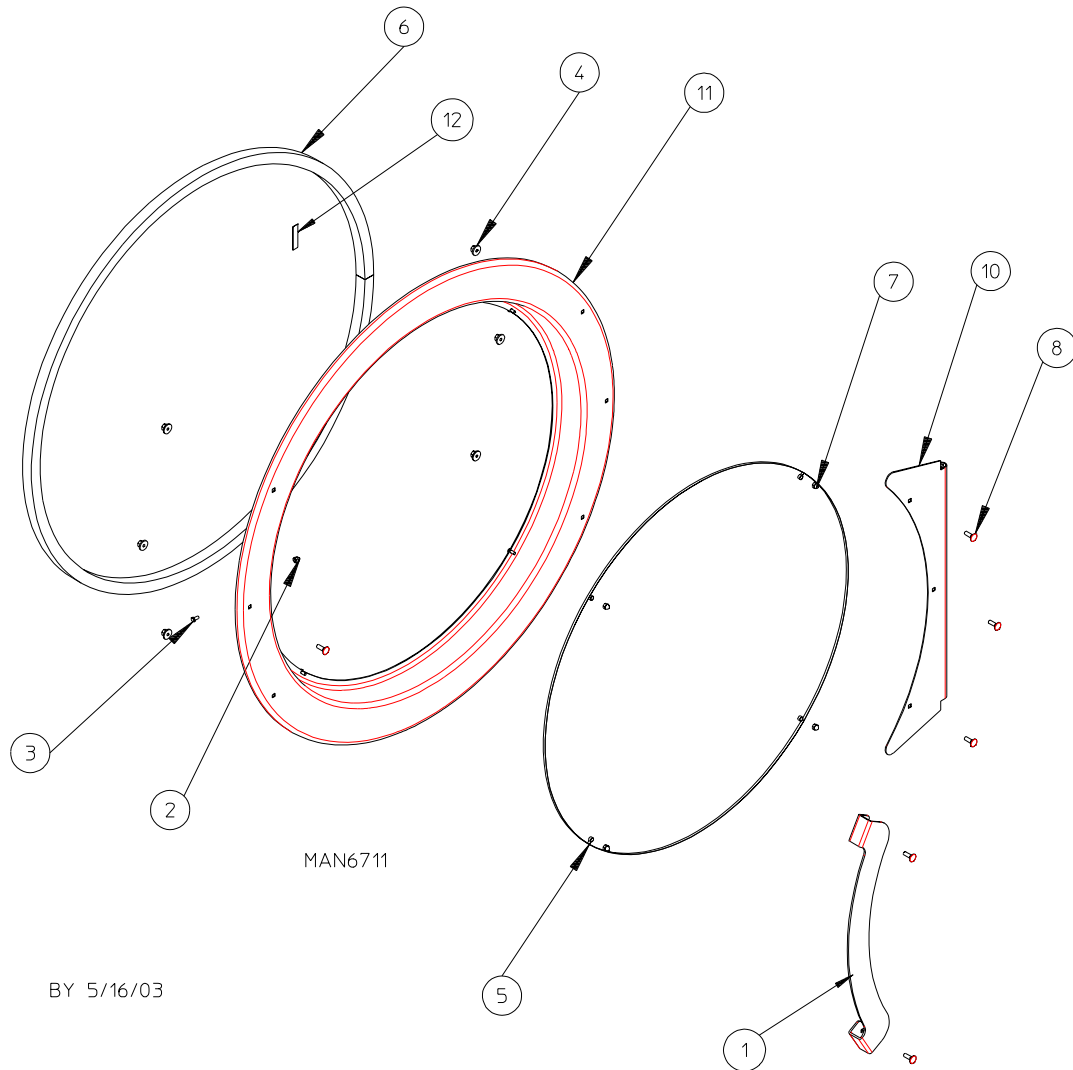
* Specify color when ordering.



<u>Illus. No.</u>	<u>Part No.</u>	<u>Qty.</u>	<u>Description</u>
1	112571	1	Phase 7 OPL English Keyboard Label Assembly
2*	822754	1	Computer Door Complete (includes illus. nos. 1 through 7)
	850980	1	Computer Door ONLY
3	137247	1	Phase 7 OPL Reversing Microprocessor Controller
4	150005	4	#6-32 x 1/4" Phillips Round Head Screw
5	153010	4	#6 Star Washer
6	136016	1	5-Amp Fuse
7	136097	1	500 mA Fuse

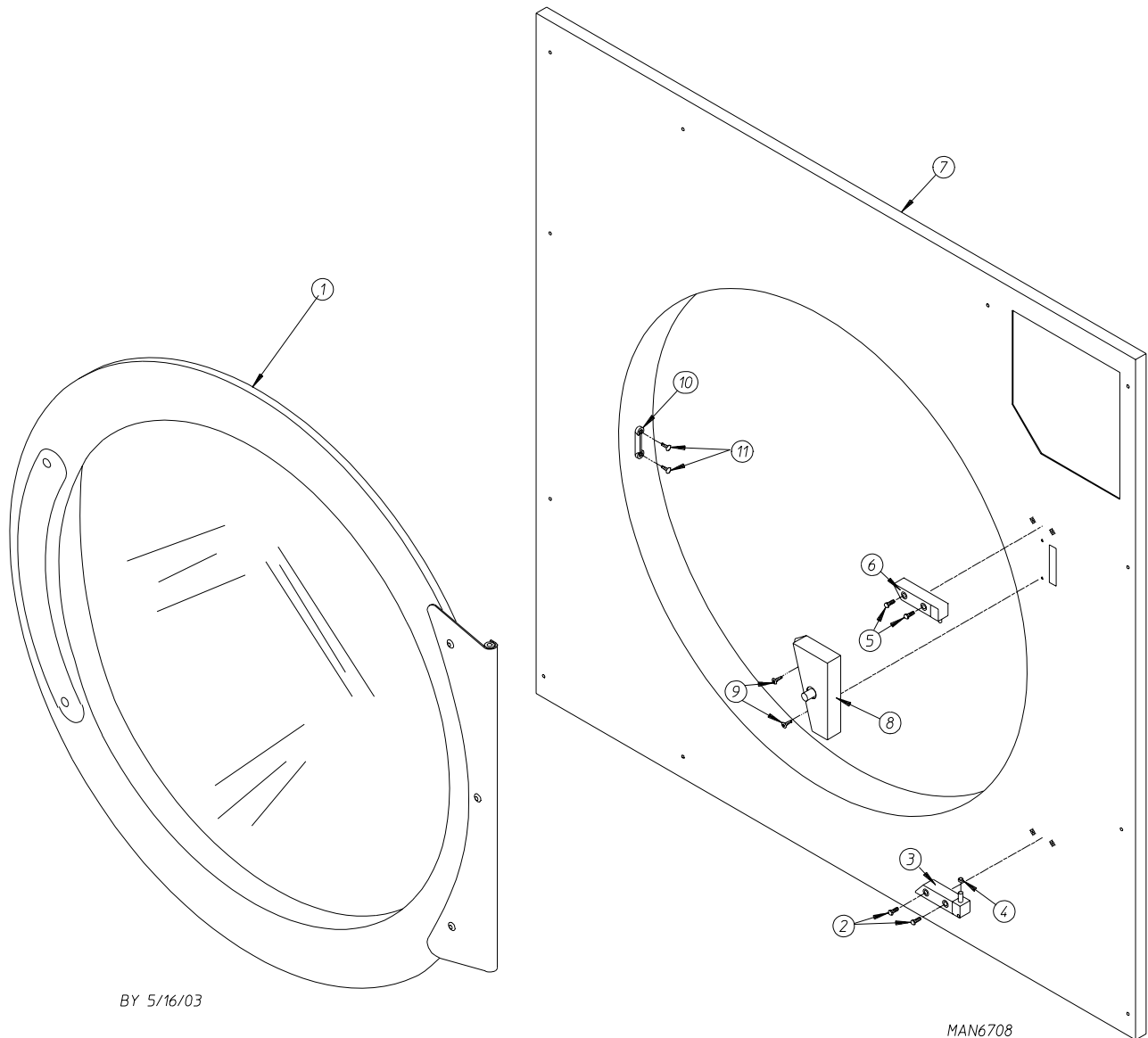
* Specify color when ordering.

IMPORTANT: Check label on computer chip to verify correct part number.

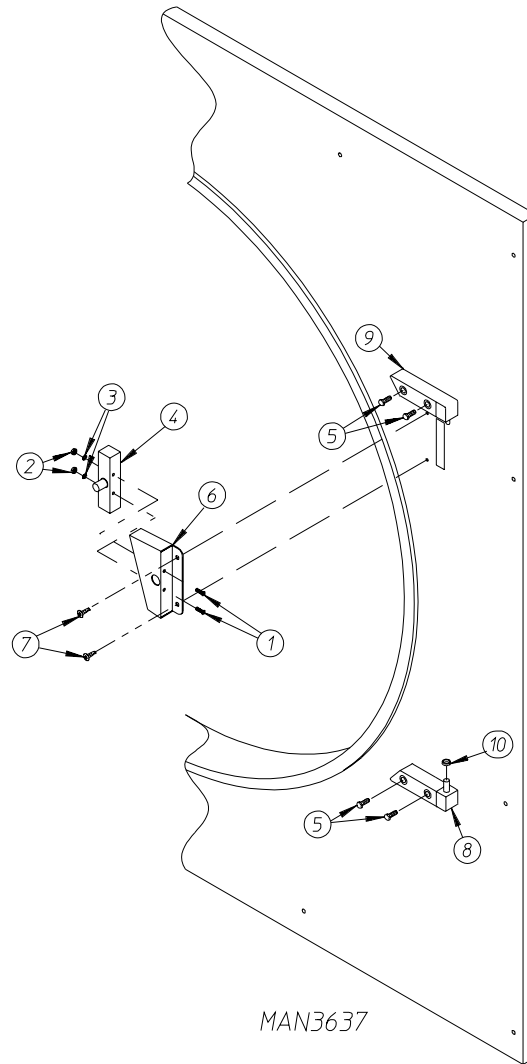


<u>Illus. No.</u>	<u>Part No.</u>	<u>Qty.</u>	<u>Description</u>
1	883863*	1	Large Cold Rolled Steel (CRS) Main Door Handle
2	151010	1	#10-32 Black Acorn Nut
3	150120	1	Main Door Latch Screw (#10-32 dome hex head screw)
4	152014	6	1/4-20 Free Spin Wash Nut
5	102214	1	30" Door Glass
	170730	1	Door Glass Adhesive (10.3 oz. cartridge)
6	102357	1	Large Steel Door Gasket
7	151013	4	#10-32 Black Nylon Acorn Nut
8	150683	6	1/4-20 x 5/8" Black Carriage Bolt
9	102361	1	3/32" x 9/16" Black Gasket Tape
10	835056	1	Door Hinge
11	835057	1	Cold Rolled Steel (CRS) Door Ring Assembly
12	110006	2	1/2" Black Strapping Tape
	835055	1	Black Cold Rolled Steel (CRS) Main Door Assembly...Not Illustrated (includes illus. nos. 1 through 12)

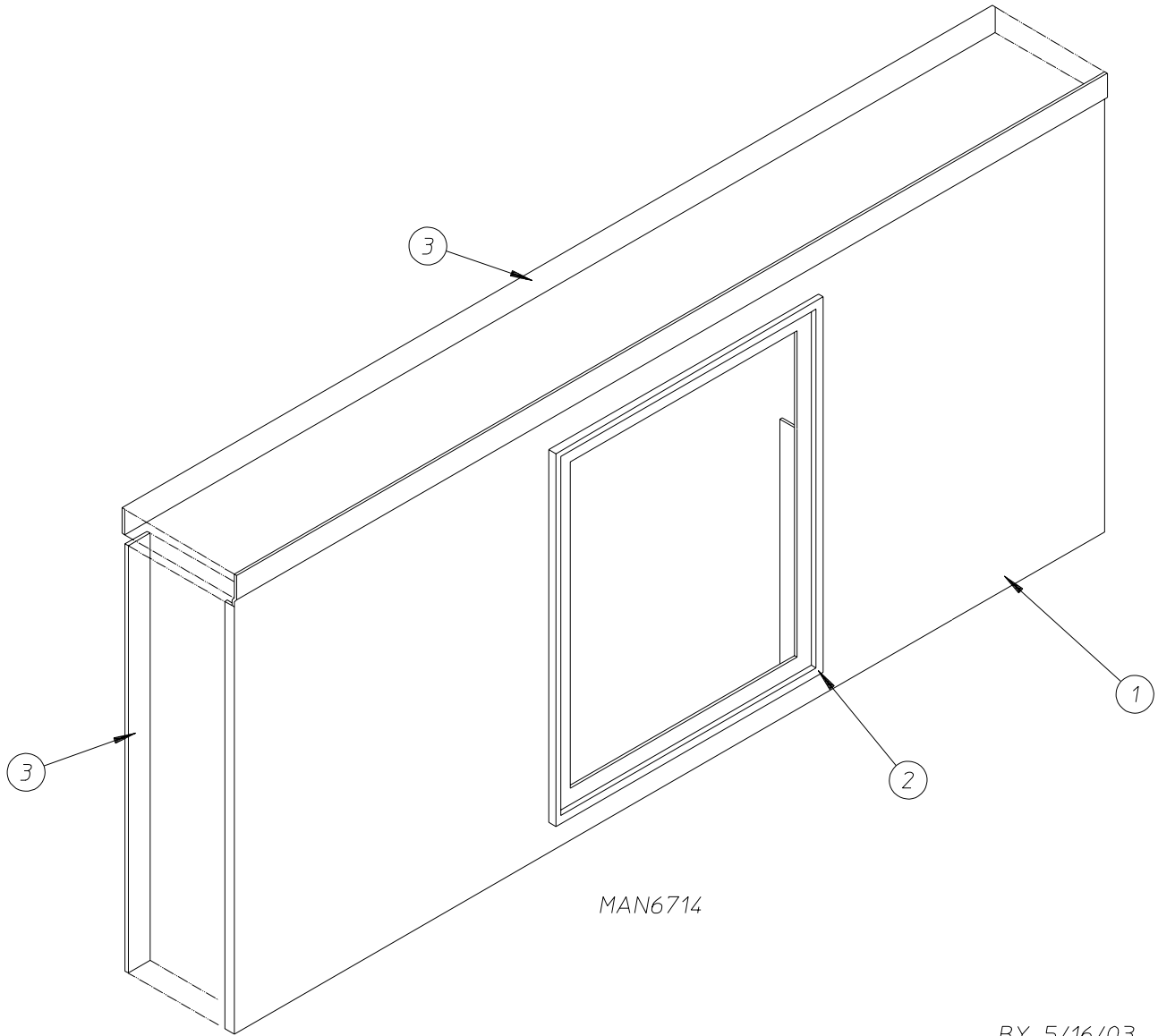
* Specify color when ordering.



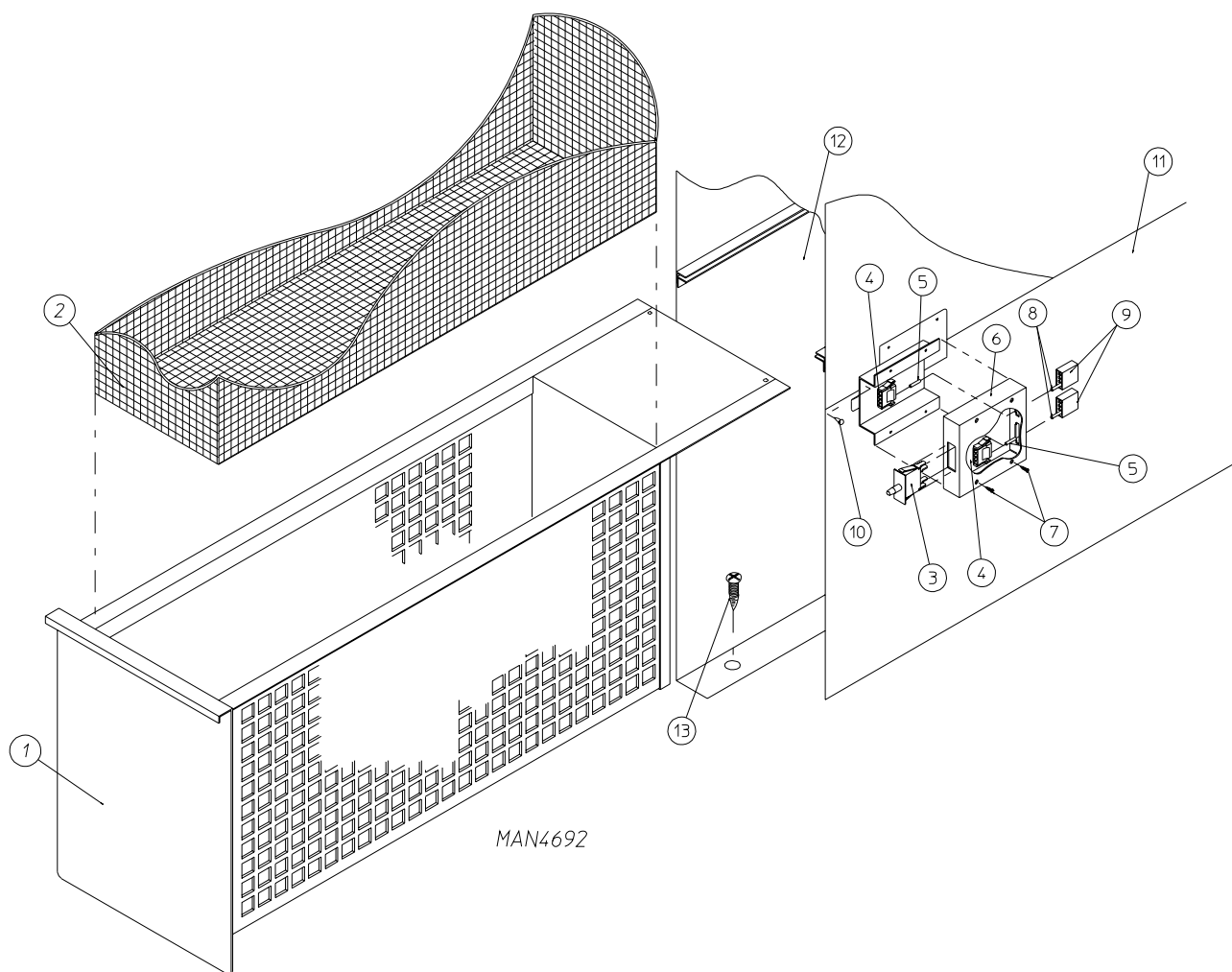
<u>Illus. No.</u>	<u>Part No.</u>	<u>Qty.</u>	<u>Description</u>
1*	835055	1	Black Cold Rolled Steel (CRS) Main Door Assembly (refer to Cold Rolled Steel (CRS) Main Door Assembly on page 5)
2	150445	2	1/4-20 x 3/4" Socket Cap Screw
3	170331	1	Bottom Hinge Block
4	153031	1	Nylon Washer
5	150445	2	1/4-20 x 3/4" Black Socket Cap Screw
6	170329	1	Top Hinge Block
7	851083	1	Front Panel Assembly for Cold Rolled Steel (CRS) Door
8	801786	1	Main Door Switch and Housing for RND Door
9	150301	2	#8-18 x 7/16" Phillips Pan Head TEK Screw
10	170330	1	Friction Door Latch
11	154215	2	5/32" x 1/4" Alum Rivet



<u>Illus. No.</u>	<u>Part No.</u>	<u>Qty.</u>	<u>Description</u>
1	150006	2	#6-32 x 7/8" Phillips Pan Head Machine Screw
2	152013	2	#6-32 Hex Nut
3	153010	2	#6 Star Washer
4	137005	1	Single-Pole Door Switch (SDS)
5	150445	4	1/4-20 x 3/4" SHCS Black
6	881687	1	White Main Door Switch Housing ONLY
	881695	1	Blue Main Door Switch Housing ONLY
	881702	1	White Main Door Switch with Housing Assembly (includes illus. nos. 1 through 4 and 6)
	881700	1	Blue Main Door Switch with Housing Assembly (includes illus. nos. 1 through 4 and 6)
7	150301	2	#8-18 x 7/16" Phillips Pan Head TEK Screw
8	881441	1	White Bottom Hinge Block
	881735	1	Blue Bottom Hinge Block
9	881440	1	White Top Hinge Block
	881736	1	Blue Top Hinge Block
10	153031	1	Nylon Washer

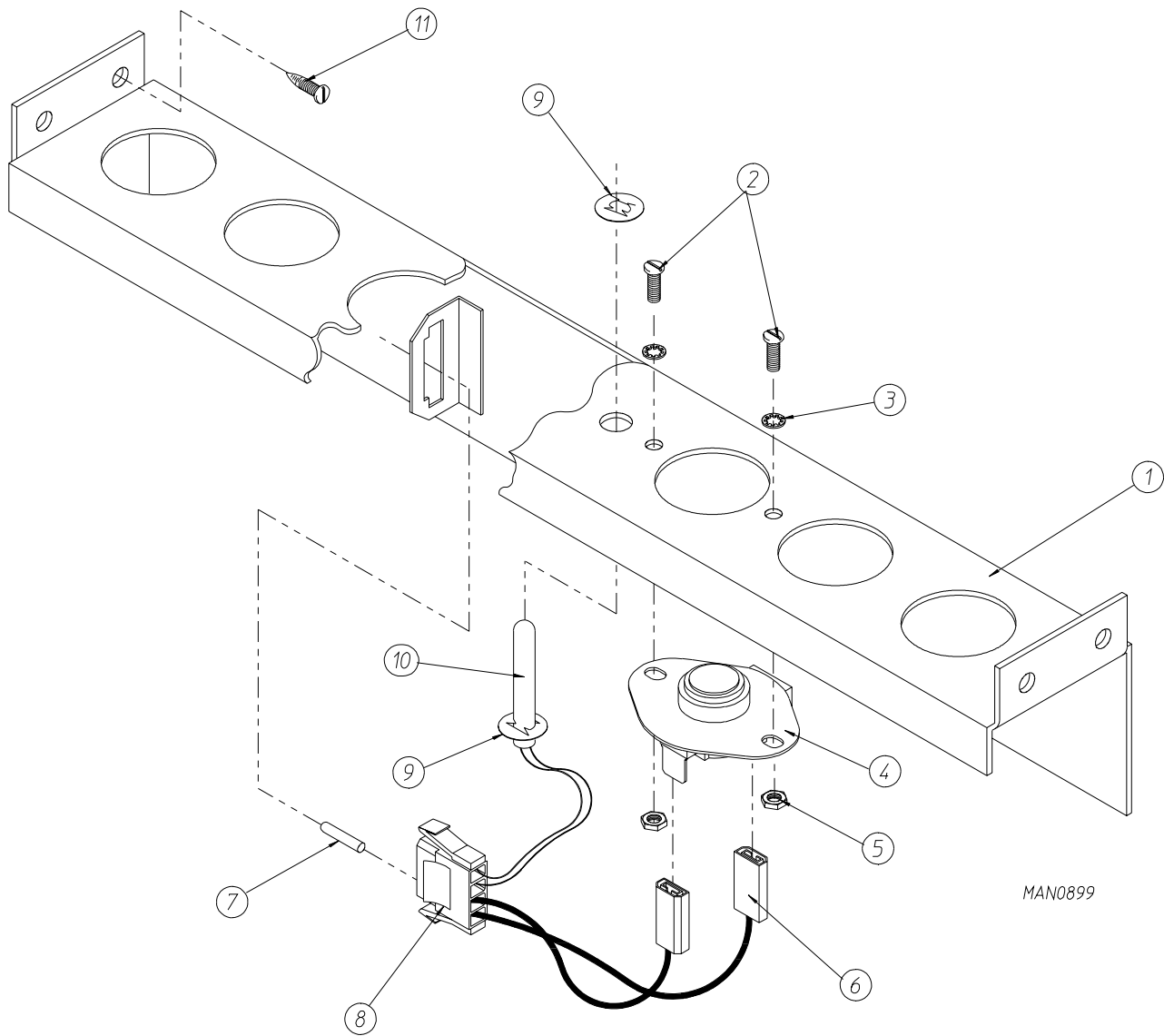


<u>Illus. No.</u>	<u>Part No.</u>	<u>Qty.</u>	<u>Description</u>
1*	820945	1	Lint Door Assembly (includes illus. nos. 1 through 3)
2	117607	6	1/4" x 3/8" Poron Foam
3	117604	9	Noise Suppression Tape (sold by the foot)

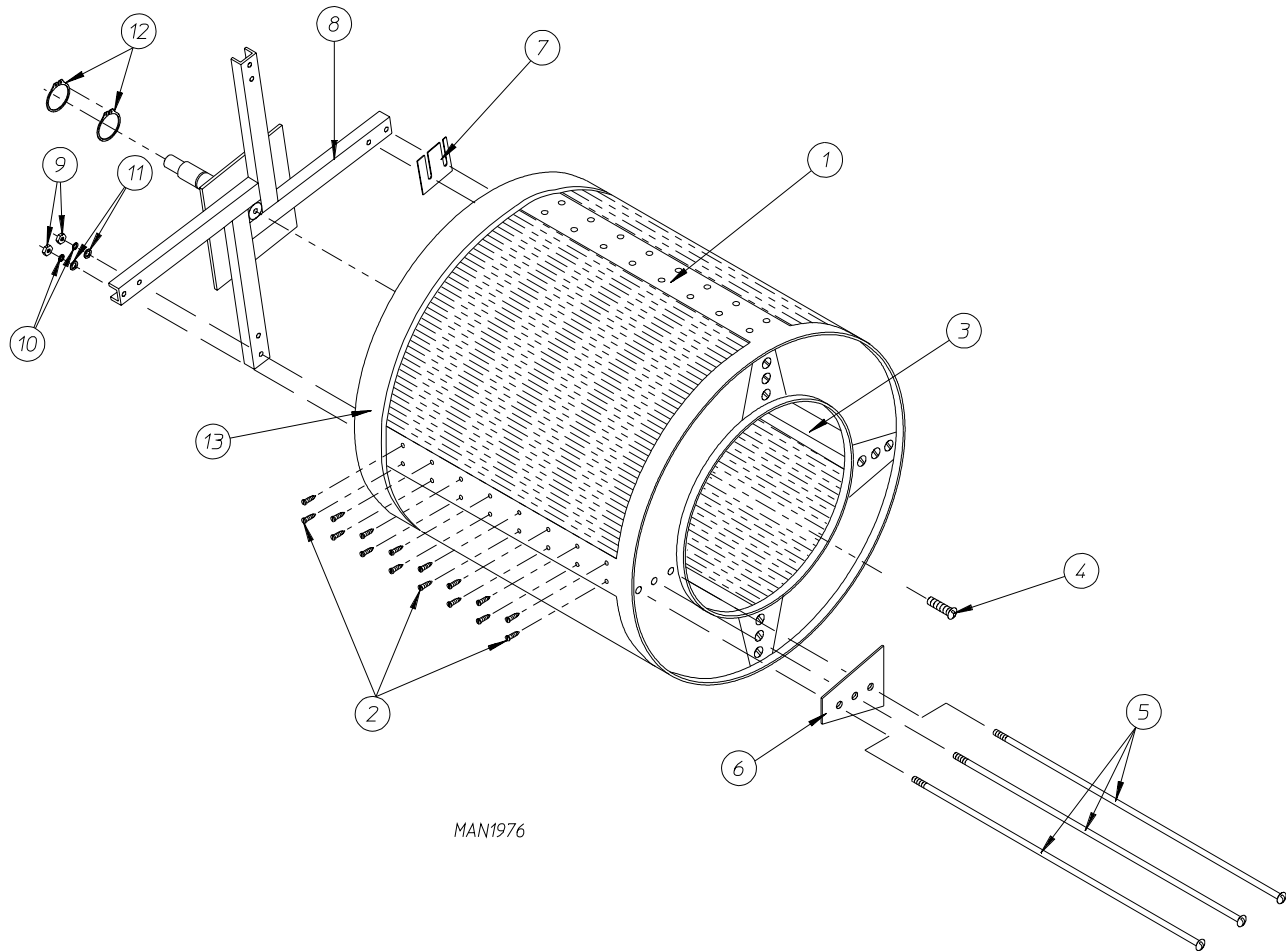


<u>Illus. No.</u>	<u>Part No.</u>	<u>Qty.</u>	<u>Description</u>
1*	821046	1	Lint Drawer Assembly
2	820925	1	Lint Screen Assembly ONLY
3	150002	2	#6-32 x 1" Phillips Round Head Machine Screw
4	122116	1	Lint Drawer Switch ONLY
5	153012	2	#8 Star Washer
6	152001	2	#8-32 x 3/8" Hex Nut
7	820138	1	Lint Drawer Switch Assembly Complete (includes illus. nos. 3 through 8)
	820137	1	Lint Drawer Switch Mounting Bracket Assembly ONLY (includes illus. nos. 3 and 4)
	321638	1	Lint Drawer Switch Mounting Bracket ONLY
8	150309	2	#10-16 x 1/2" Hex Head TEK Crimptite Screw

* Specify color when ordering.



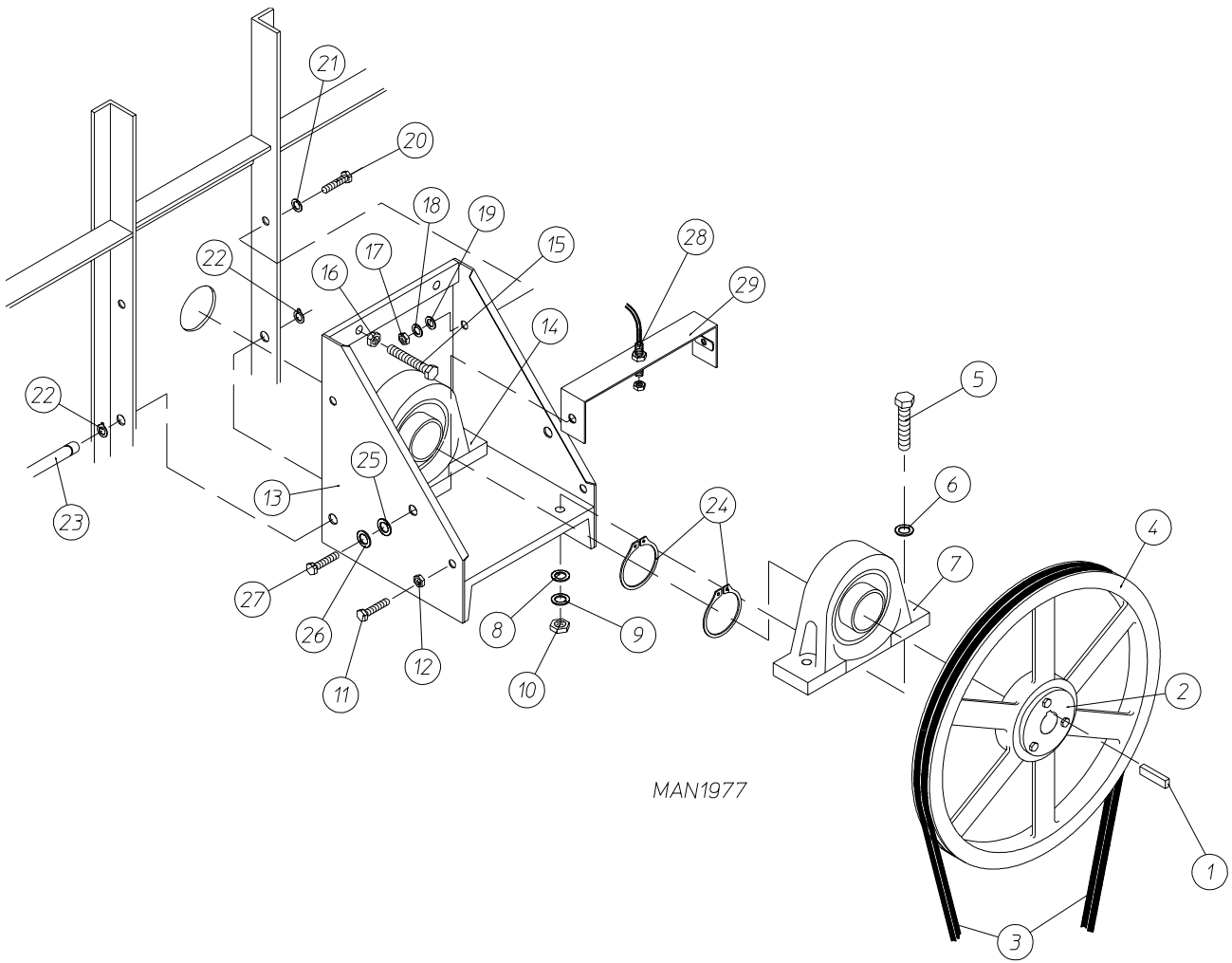
<u>Illus. No.</u>	<u>Part No.</u>	<u>Qty.</u>	<u>Description</u>
1	815931	1	Microprocessor Temperature Sensor Bracket Complete (includes illus. nos. 1 through 11)
	820967	1	Microprocessor Temperature Sensor Bracket ONLY
2	150005	2	#6-32 x 1/4" Phillips Round Head Machine Screw
3	153010	2	#6 Star Washer
4	130112	1	225° Large Automatic Reset Thermostat ONLY
5	152000	2	#6-32 Hex Nut
6	121028	2	1/4" x 0.032 Insulated Terminal
7	122701	4	Socket Terminal ONLY
	122801	1	Pin/Socket Extraction Tool...Not Illustrated
8	122605	1	4-Pin Connector (female)
9	154007	2	1/4" Push On Fastener
10	880251	1	1/4" Temperature Sensor Probe Assembly (includes illus. nos. 6 through 10)
11	150301	4	#8-18 x 7/16" Phillips Pan Head TEK Screw



<u>Illus. No.</u>	<u>Part No.</u>	<u>Qty.</u>	<u>Description</u>
1	820979*	1	Galvanized Basket (tumbler) ONLY without Felt Collar
	821795	1	Galvanized Basket (tumbler) and Support Assembly Complete (includes illus. nos. 1 through 13)
	881640	1	Stainless Steel Basket (tumbler) and Support Assembly Complete (includes illus. nos. 1 through 13)
2	150309	64	#10-16 x 1/2" Hex Head TEK Crimptite Screw
3	332140	4	Galvanized Basket (tumbler) Rib ONLY
4	150500	1	5/16-18 x 3/4" Socket Button Head Screw
5	100910	12	1/2-13 x 44" Tie Rod
6	332139	4	Basket (tumbler) Reinforcing Plate ONLY
7	332177	**	Basket (tumbler) Shim ONLY
8	881555	1	Basket (tumbler) Support ONLY
9	152011	12	1/2-13 Hex Nut
10	153026	12	1/2" Lock Washer
11	153011	13	9/16" x 1-3/8" Flat Washer
12	100810	1	3-1/8" Retaining Ring
13	116007	1	Felt Collar ONLY

* Felt collar is not included and **must be** ordered separately.

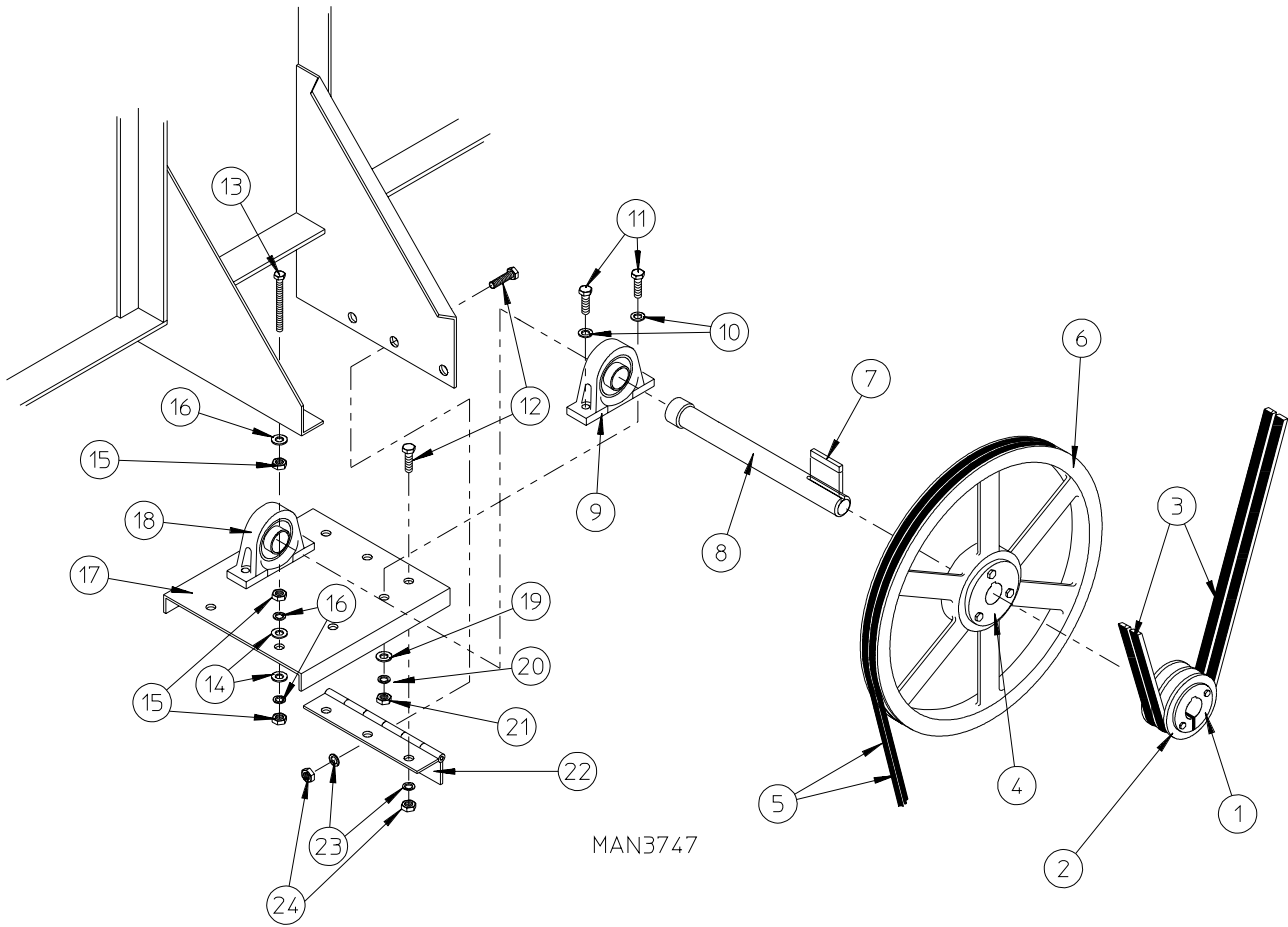
** As required.



MAN1977

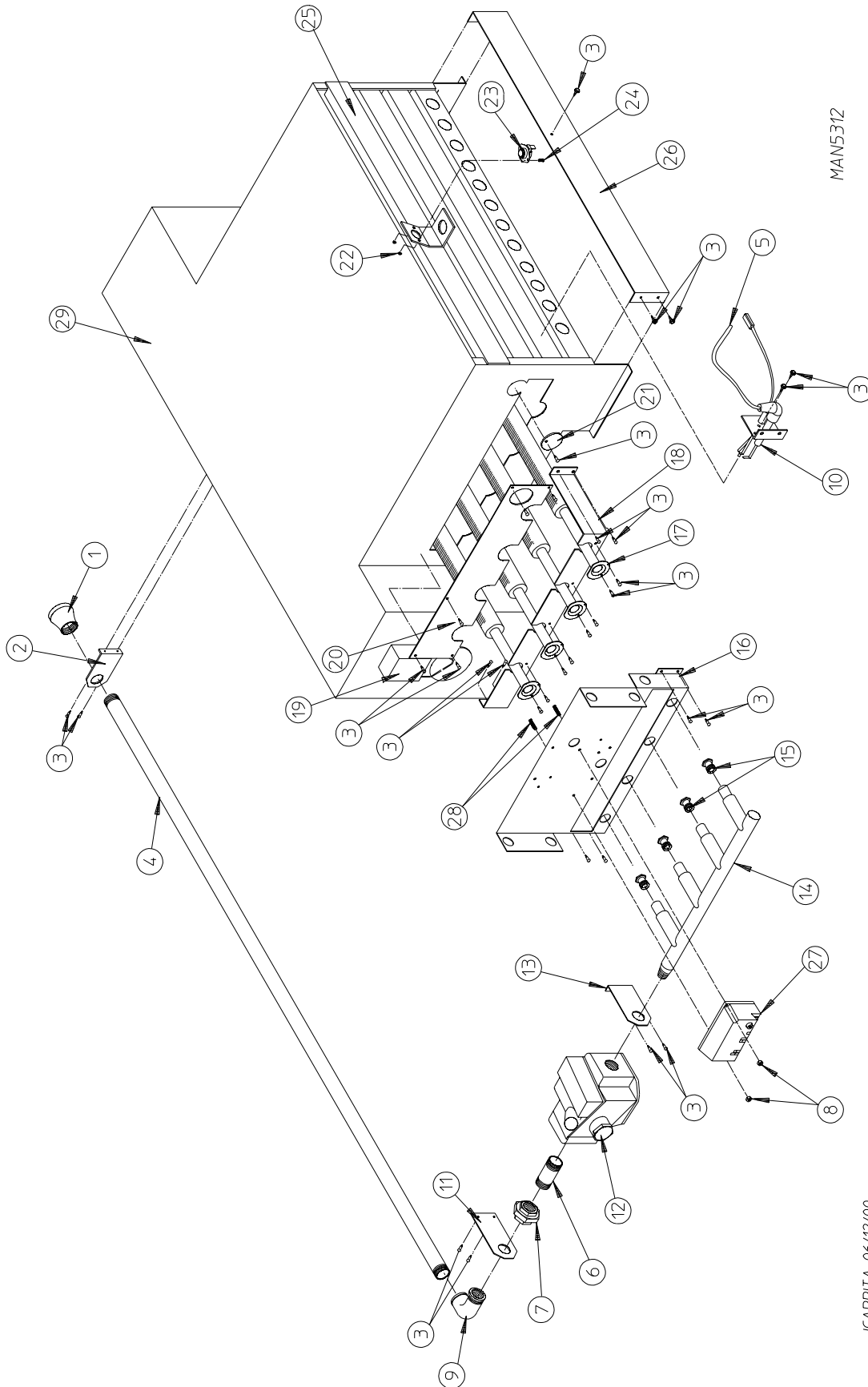
<u>Illus. No.</u>	<u>Part No.</u>	<u>Qty.</u>	<u>Description</u>
1	100703	1	1/2" x 1/2" x 2" Key
2	101217	1	2-1/2" SFX Bushing with Key
3*	100137	2	AB-91 V-Belt (basket [tumbler] to idler)
4	101182	1	25" Basket (tumbler) Pulley ONLY
5	150602	4	5/8-11 x 3" Hex Head Machine Bolt
6	153016	4	5/8" Flat Washer
7	100242	1	2-1/2" Pillow Block Bearing ONLY
8	153016	4	5/8" Flat Washer
9	153015	4	5/8" Lock Washer
10	152010	4	5/8-11 Hex Nut
11	150600	2	3/8-16 x 1-1/2" Hex Head Machine Bolt
12	152005	2	3/8-16 Hex Nut
13	821175	1	Basket (tumbler) Bearing Mount ONLY
14	100242	1	2-1/2" Pillow Block Bearing ONLY
15	150604	2	1/2-20 x 3" Tap Bolt
16	152012	2	1/2-20 Hex Nut
17	152005	2	3/8-16 Hex Nut
18	153005	2	3/8" Lock Washer
19	153004	4	3/8" Flat Washer
20	150600	2	3/8-16 x 1-1/2" Hex Head Machine Bolt
21	153004	2	3/8" Flat Washer
22	100801	2	5/8" Retaining Ring
23	332153	1	5/8" Hinge Pin
24	100810	1	1/8" Retaining Ring
25	153018	2	1/4" Flat Washer
26	153007	2	1/4" Lock Washer
27	150512	2	1/4-20 x 1/2" Hex Head Machine Bolt
28	824807	1	Rotational Sensor Assembly
29	820997	1	Rotational Sensor Mounting Bracket

* Replace in matched sets (both belts).



<u>Illus. No.</u>	<u>Part No.</u>	<u>Qty.</u>	<u>Description</u>
1	101152	1	1-3/8" Bushing with Setscrew
2	101143	1	2B3.8 SH Sheave
3*	100137	2	AB-91 V-Belt (basket [tumbler] to idler)
4	101184	1	SK 1-3/8" Bushing with Setscrew
5*	100102	2	3V-740 V-Belt (idler to motor)
6	101112	1	19" Idler Pulley
7	100715	1	1/4" x 1/4" x 4-5/8" Key
8	332152	1	Idler Shaft ONLY
9	100259	1	1-3/8" Pillow Block Griplock Bearing
10	153011	4	9/16" ID x 1-3/8" OD Flat Washer
11	150606	4	1/2-13 x 2" Tap Bolt
12	150501	6	5/16-18 x 3/4" Tap Bolt
13	152034	2	3/8-16 x 3-1/2" Hex Head Machine Bolt
14	153004	6	3/8" x 1" Flat Washer
15	152005	6	3/8-16 Hex Nut
16	153005	4	3/8" Lock Washer
17	820932	1	Idler Bearing Mount Assembly Complete (includes illus. nos. 7 through 11 and 17 through 24)
	332151	1	Idler Bearing Mount ONLY
18	100259	1	1-3/8" Pillow Block Griplock Bearing
19	153011	4	9/16" ID x 1-3/8" OD Flat Washer
20	153026	4	1/2" Lock Washer
21	152011	4	1/2-13 Hex Nut
22	103005	1	Idler Adjustment Hinge ONLY
23	153002	6	5/16" Lock Washer
24	152004	6	5/16-18 Hex Nut

* Replace in matched sets (both belts).



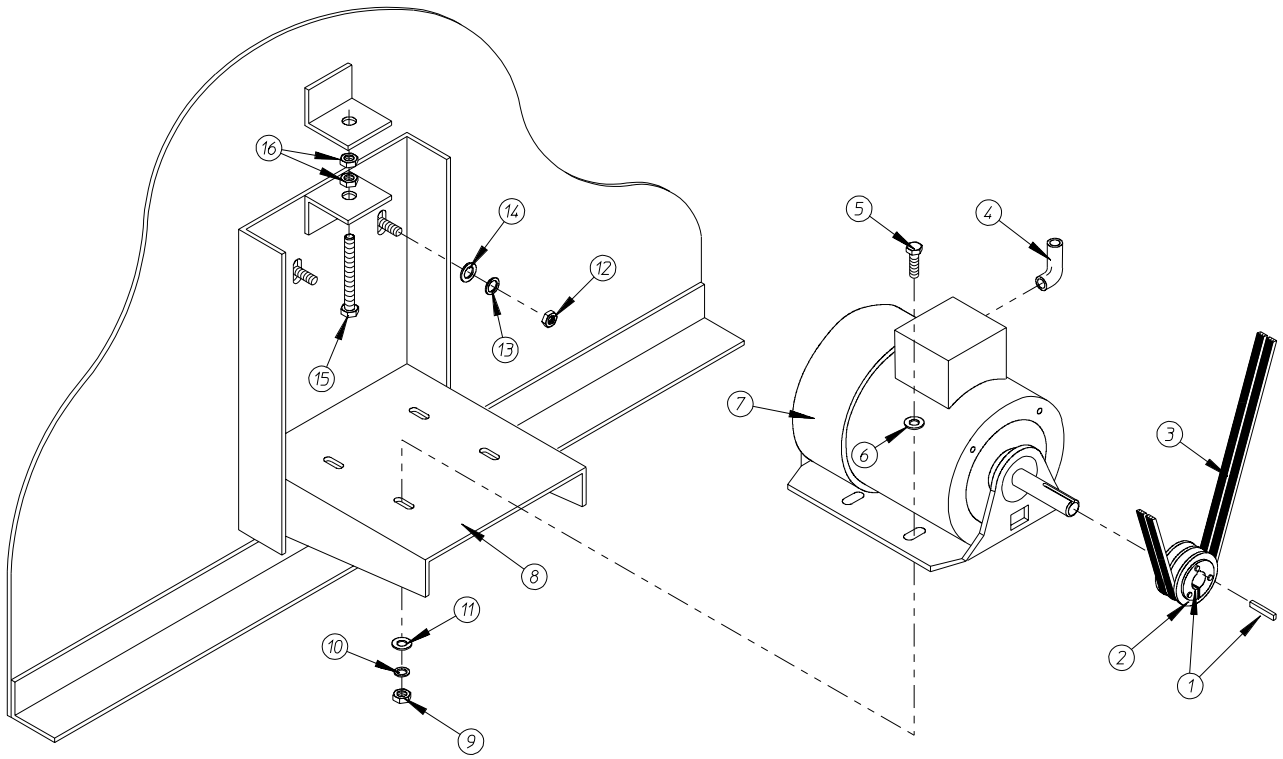
MAN5312

JCARRITA 06/12/00

<u>Illus. No.</u>	<u>Part No.</u>	<u>Qty.</u>	<u>Description</u>
1	142929	1	1-1/2" to 1" Reducing Coupling
2	332117	1	Pipe Bracket
3	150309	33	#10-16 x 1/2" Hex Head TEK Crimptite Screw
4	142583	1	1" x 40" Nipple
5	128919	1*	High Voltage (HV) Ignition Cable with Cap 36"
6	142808	1	1" x 3" Nipple
7	142602	1	1" Union
8	152013	2	#6-32 Hex Nut
9	142507	1	1" x 90° Street Elbow
10	128915	1	Direct Spark Ignition (DSI) Ignitor
11	332487	1	Gas Pipe Bracket Straight Extended
12	140017	1	1" 24 VAC Redundant Gas Valve (natural gas)
	882945	1	1" 24 VAC Gas Valve (liquid propane [L.P.] gas)
13	332486	1	Gas Pipe Bracket Bent Extended
14	141240	1	4-Port Manifold ONLY
15*	140839	4	#2 Burner Orifice (natural gas)
	140820	4	#29 Burner Orifice (liquid propane [L.P.] gas)
16	390169	1	Direct Spark Ignition (DSI) Mount Manifold Rest
17	881492	4	Burner Tube ONLY
18	332121	1	Burner Tube Support ONLY
19	-----	1	Sail Switch (refer to Sail Switch Assembly on page 26 and page 27)
20	332113	1	Burner Box Cover Plate
21	331290	1	Ignitor/Flame-Probe Sight Hole Disc
22	151000	2	#6-32 Pal Nut
23	130201	1	330° Manual Reset Hi-Limit
24	150005	2	#6-32 x 1/4" Phillips Round Head Machine Screw
25	821457	1	Burner Hi-Limit Bracket
26	332256	1	Large Dryer Liquid Propane (L.P.) Burner Baffle (L.P. models Only)
27	801048	1	Johnson Direct Spark Ignition (DSI) Module (three [3] tries)
28	153562	2	#6-32 x 3/4" Clinch Stud
29	835037**	1	Burner Assembly (natural gas) Complete Less Orifice
	821960**	1	Burner Assembly (liquid propane [L.P.] gas) Complete Less Orifice
	820904	1	Burner Box ONLY
	880978	1	AD-170SE Liquid Propane (L.P.) Conversion Kit

* Consult factory for elevations over 2,000 feet.

** Orifices *are not included* and **must be** ordered separately.



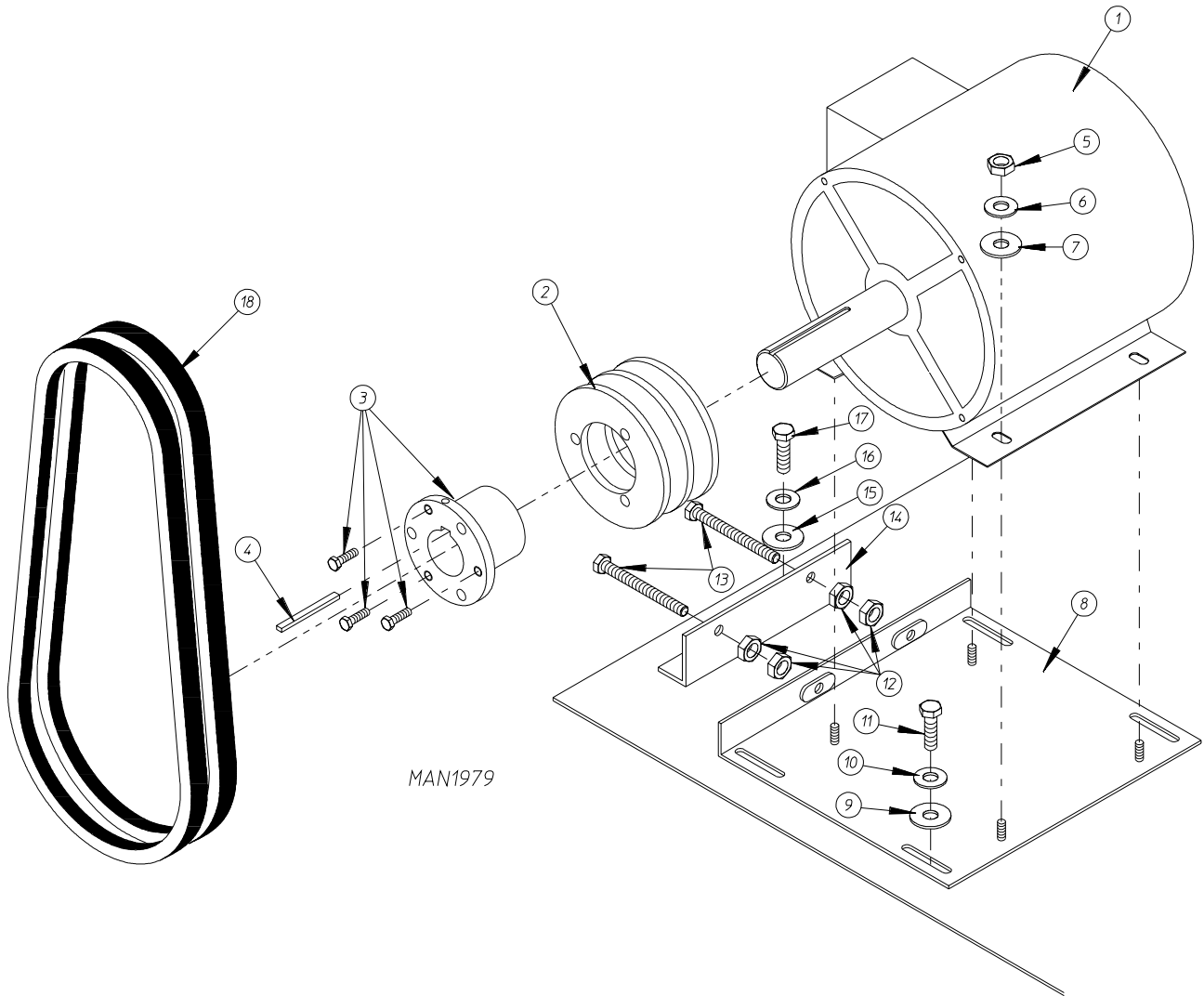
MAN0329

<u>Illus. No.</u>	<u>Part No.</u>	<u>Qty.</u>	<u>Description</u>
1	101121	1	5/8" SK Bushing
2	101114	1	2.65" Pulley (for 60 Hz models Only)
	101120	1	3.15" Pulley (for 50 Hz models Only)
3*	100102	2	3V-740 V-Belt (motor to idler)
4	120200	1	3/8" x 90° Connector
5	150501	4	5/16-18 x 3/4" Hex Head Machine Bolt
6	153001	4	5/16" Flat Washer
7	100050	1	1 HP 208/230/380/460v 3ø 50/60 Hz Totally Enclosed, Fan-Cooled (T.E.F.C.) Motor (56Z frame)
8	800952	1	Basket (tumbler) Motor Mount ONLY (56Z frame)
	820941**	1	(50/60 Hz) Totally Enclosed, Fan-Cooled (T.E.F.C.) Basket (tumbler) Motor Mount Assembly Complete (includes illus. nos. 1, 4 through 11, 15, and 16)
			NOTE: MOTOR PULLEY MUST BE ORDERED SEPARATELY
9	152004	4	5/16-18 Hex Nut
10	153002	4	5/16" Lock Washer
11	153001	4	5/16" Flat Washer
12	152004	4	5/16-18 Hex Nut
13	153002	4	5/16" Lock Washer
14	153001	4	5/16" Flat Washer
15	150619	1	3/8-16 x 3" Hex Head Machine Bolt
16	152005	2	3/8-16 Hex Nut

* Replace in matched sets (both belts).

** Specify color when ordering.

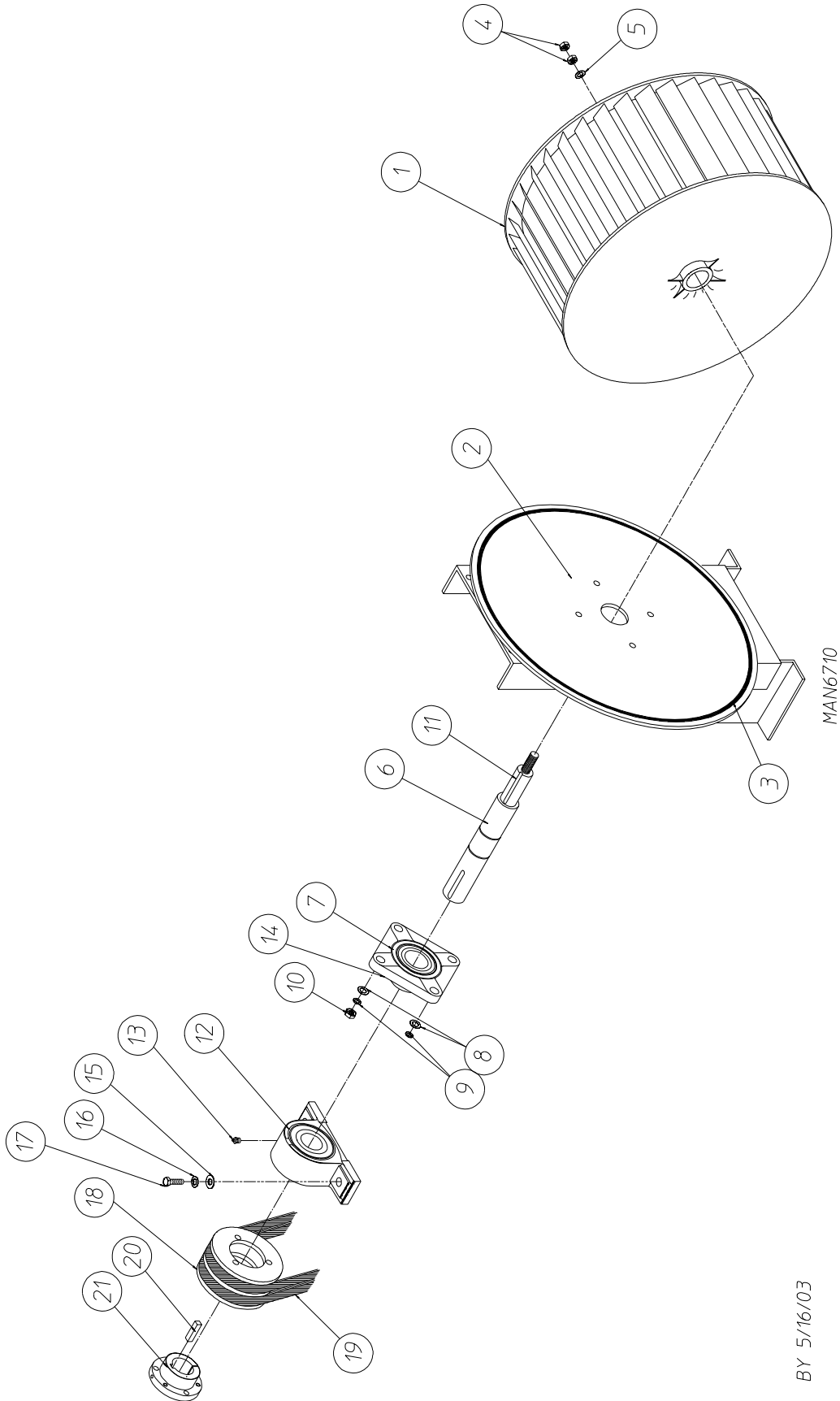
IMPORTANT: For voltages higher than 460v, contact the factory for correct part number of motor or motor mount assembly.



<u>Illus. No.</u>	<u>Part No.</u>	<u>Qty.</u>	<u>Description</u>
1	100046	1	7.5 hp 208-230/460v / 3 ϕ Motor (for 50/60 Hz models Only)
2	101148	1	SB x 4.0 Motor Pulley (for 60 Hz models Only)
	101147	1	SB x 4.8 Motor Pulley (for 50 Hz models Only)
3	101152	1	SH x 1-3/8" Bushing (for 60 Hz models Only)
	101194	1	SDS x 1-3/8" Bushing (for 50 Hz models Only)
4	100706	1	5/16" x 5/16" x 1-3/8" Key
5	152004	4	5/16-18 Hex Nut
6	153002	4	5/16" Lock Washer
7	153001	4	5/16" Flat Washer
8	821091	1	Motor Mount Adjustment Plate ONLY
9	153001	4	5/16" Flat Washer
10	153002	4	5/16" Lock Washer
11	150501	4	5/16-18 x 3/4" Hex Head Machine Bolt
12	152004	4	5/16-18 Hex Nut
13	150503	2	5/16-18 x 2" Hex Head Machine Bolt
14	332322	1	Motor Mount Adjustment Angle ONLY
15	153001	2	5/16" Flat Washer
16	153002	2	5/16" Lock Washer
17	150501	2	5/16-18 x 3/4" Hex Head Machine Bolt
18*	100128	2	BX-50 Cogged Belt (motor to fan shaft) For 60 Hz Models ONLY
	100164	2	BX-51 Cogged Belt (motor to fan shaft) For 50 Hz Models ONLY

* Replace in matched sets (both belts).

For Gas Models ONLY

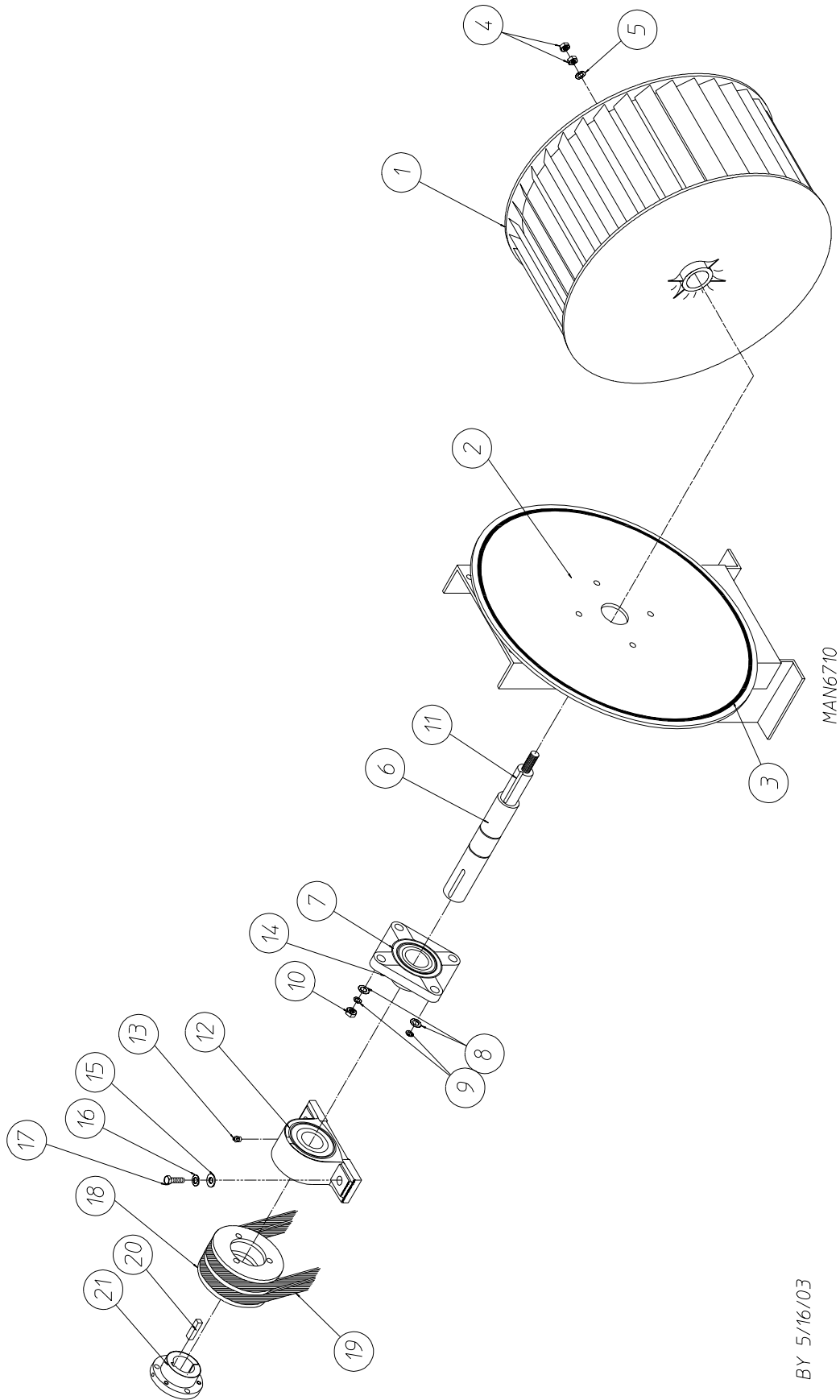


For Gas Models ONLY

<u>Illus. No.</u>	<u>Part No.</u>	<u>Qty.</u>	<u>Description</u>
1	100612	1	1-1/4" Bore x 15" Diameter x 6" Blower (fan) Wheel
2	821078	1	Fan Shaft Mount Assembly Complete (includes illus. nos. 1 through 21)
	821073	1	Fan Shaft Mount ONLY
3	117604	4	Noise Suppression Tape (sold by the foot)
4	152006	2	1/2-20 Left Hand Jam Nut
5	153065	1	1-1/2" Flat Washer
6	332280	1	Fan Shaft ONLY
7	881061	1	1-3/8" Flange Bearing with Setscrew and Grease Fitting
8	153004	4	3/8" Flat Washer
9	153005	4	3/8" Lock Washer
10	152005	4	3/8-16 Hex Nut
11	100704	1	1/4" x 1/4" x 1-3/4" Key
12	100259	1	1-3/8" Pillow Block Bearing (griplock)
13	170511	2	1/8-27 N.P.T. ZIRC Grease Fitting ONLY
14	154321	4	5/16-24 x 3/8" Black Allen Setscrew (knurl cup)
15	153004	2	3/8" Flat Washer
16	153005	2	3/8" Lock Washer
17	150600	2	3/8-16 x 1-1/2" Tap Bolt
18	101177	1	2B x 5.8 Pulley
19*	100128	2	BX-50 Cogged Belt (fan shaft to motor) For 60 Hz Models ONLY
	100164	2	BX-51 Cogged Belt (fan shaft to motor) For 50 Hz Models ONLY
20	100706	1	5/16" x 5/16" x 1-3/8" Key
21	101194	1	SDS x 1-3/8" Bushing ONLY

* Replace in matched sets (both belts).

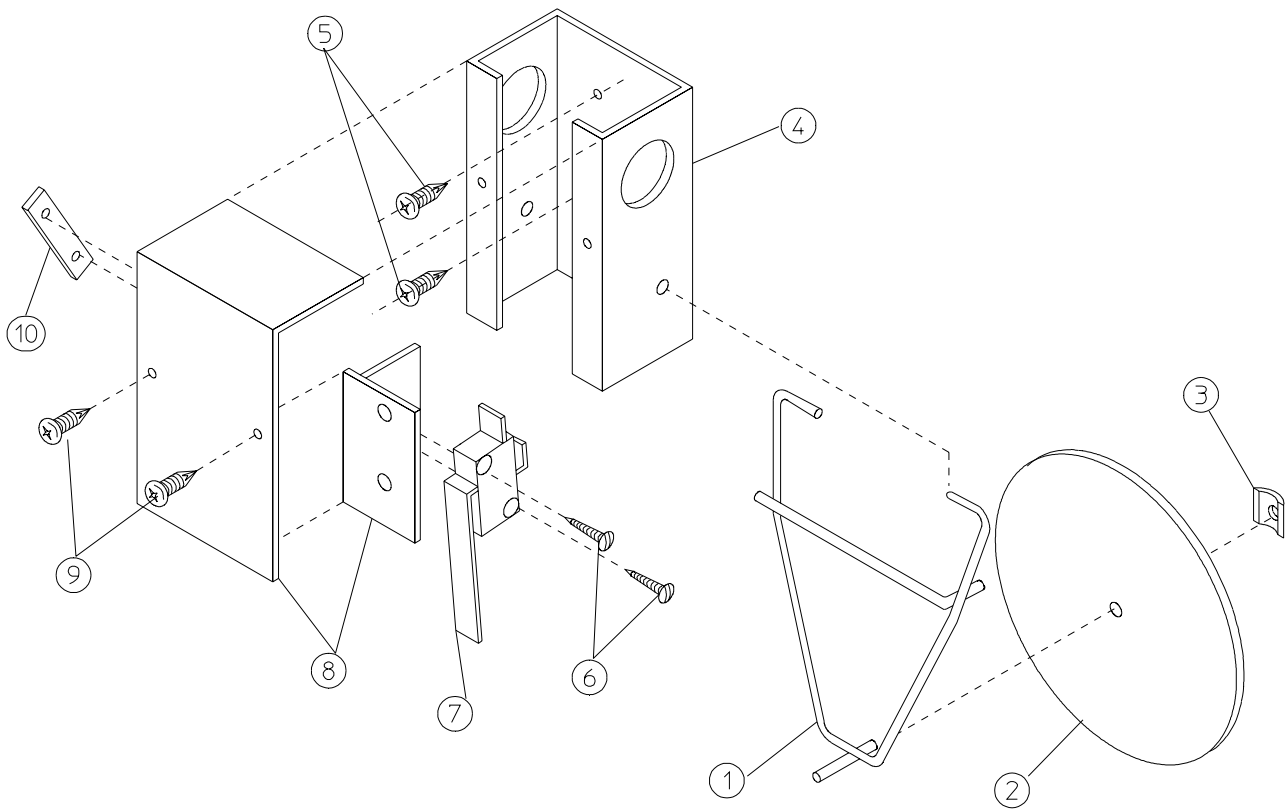
For Steam Models ONLY



For Steam Models ONLY

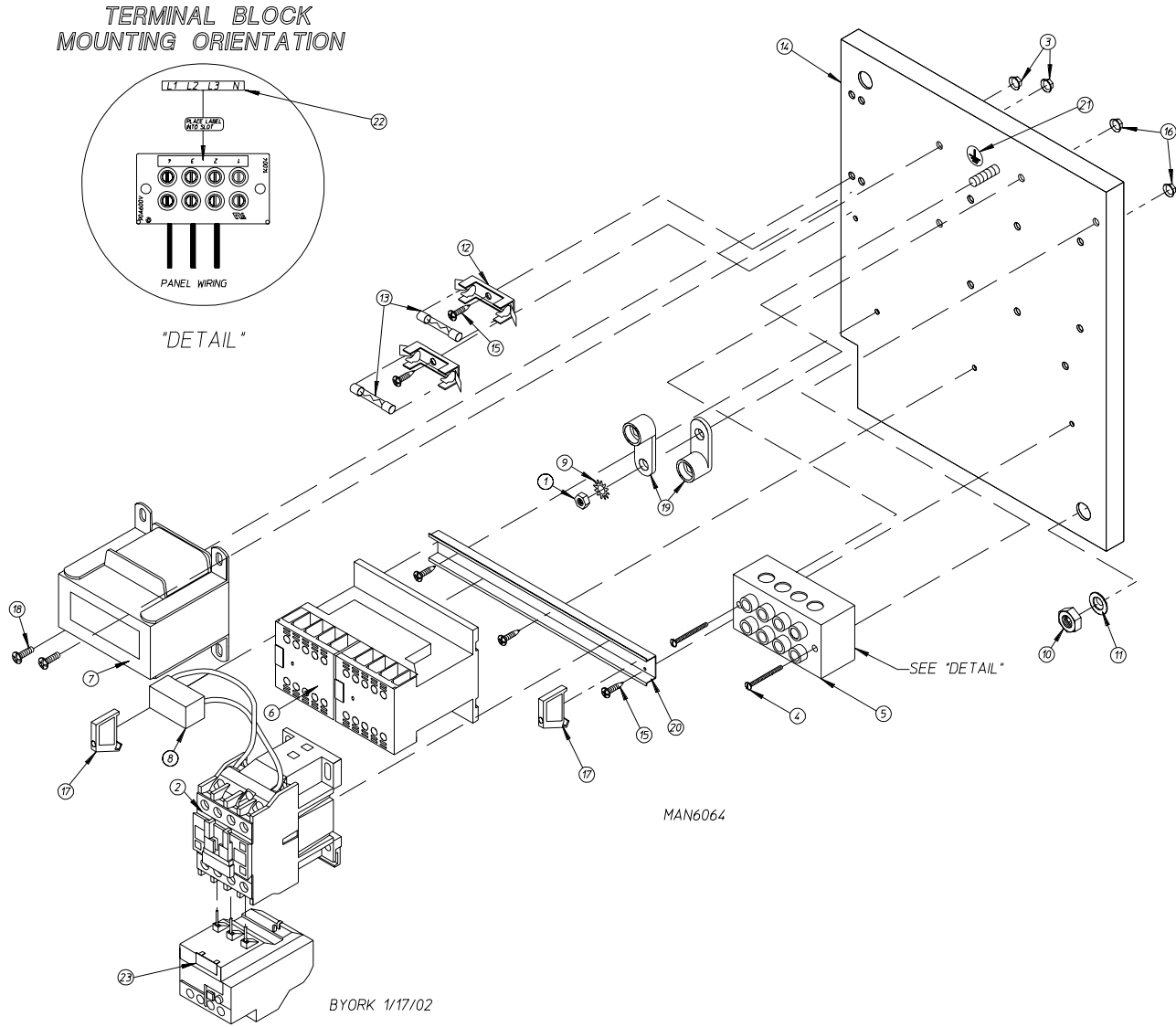
<u>Illus. No.</u>	<u>Part No.</u>	<u>Qty.</u>	<u>Description</u>
1	100612	1	1-1/4" Bore x 15" Diameter x 6" Blower (fan) Wheel
2	821077	1	Fan Shaft Mount Assembly Complete (includes illus. nos. 1 through 21)
	821073	1	Fan Shaft Mount ONLY
3	117604	4	Noise Suppression Tape (sold by the foot)
4	152006	2	1/2-20 Left Hand Jam Nut
5	153065	1	1-1/2" Flat Washer
6	332280	1	Fan Shaft ONLY
7	881061	1	1-3/8" Flange Bearing with Setscrew and Grease Fitting
8	153004	4	3/8" Flat Washer
9	153005	4	3/8" Lock Washer
10	152005	4	3/8-16 Hex Nut
11	100704	1	1/4" x 1/4" x 1-3/4" Key
12	100259	1	1-3/8" Pillow Block Bearing (griplock)
13	170511	2	1/8-27 N.P.T. ZIRC Grease Fitting ONLY
14	154321	4	5/16-24 x 3/8" Black Allen Setscrew
15	153004	2	3/8" Flat Washer
16	153005	2	3/8" Lock Washer
17	150600	2	3/8-16 x 1-1/2" Tap Bolt
18	101135	1	2B x 5.4 Pulley
19*	100128	2	BX-50 Cogged Belt (fan shaft to motor) For 60 Hz Models ONLY
	100164	2	BX-51 Cogged Belt (fan shaft to motor) For 50 Hz Models ONLY
20	100706	1	5/16" x 5/16" x 1-3/8" Key
21	101194	1	SDS x 1-3/8" Bushing ONLY
22	100704	1	1/4" x 1/4" x 1-3/4" Key

* Replace in matched sets (both belts).



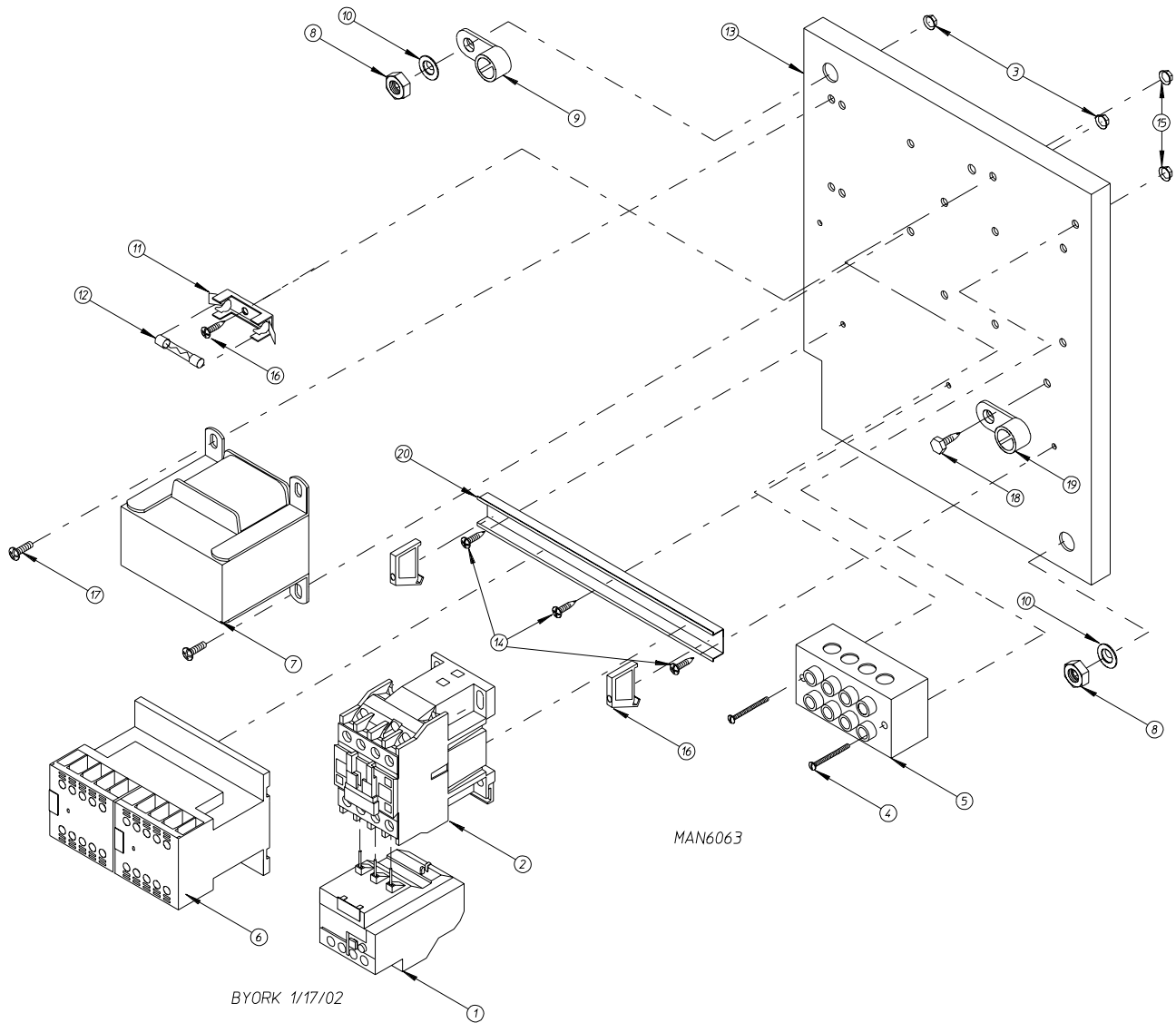
MAN0440

<u>Illus. No.</u>	<u>Part No.</u>	<u>Qty.</u>	<u>Description</u>
1	105500	1	Sail Switch Actuator Rod
2	319202	1	Sail Switch Damper (flat)
3	154002	1	1/8" Push On Fastener
4	802800	1	Sail Switch Box with Cover and Bracket ONLY
	802801	1	Sail Switch Box Assembly Complete (includes illus. nos. 1 through 4 and 6 through 10)
5	150309	2	#10-16 x 1/2" Hex Head TEK Crimptite Screw
6	150303	2	#4 x 3/4" Pan Head "A" Machine Screw
7	122200	1	Sail Switch ONLY
8	802799	1	Sail Switch Box Cover and Bracket ONLY
9	150309	2	#10-16 x 1/2" Hex Head TEK Crimptite Screw
10	154004	1	Twin Speed Nut



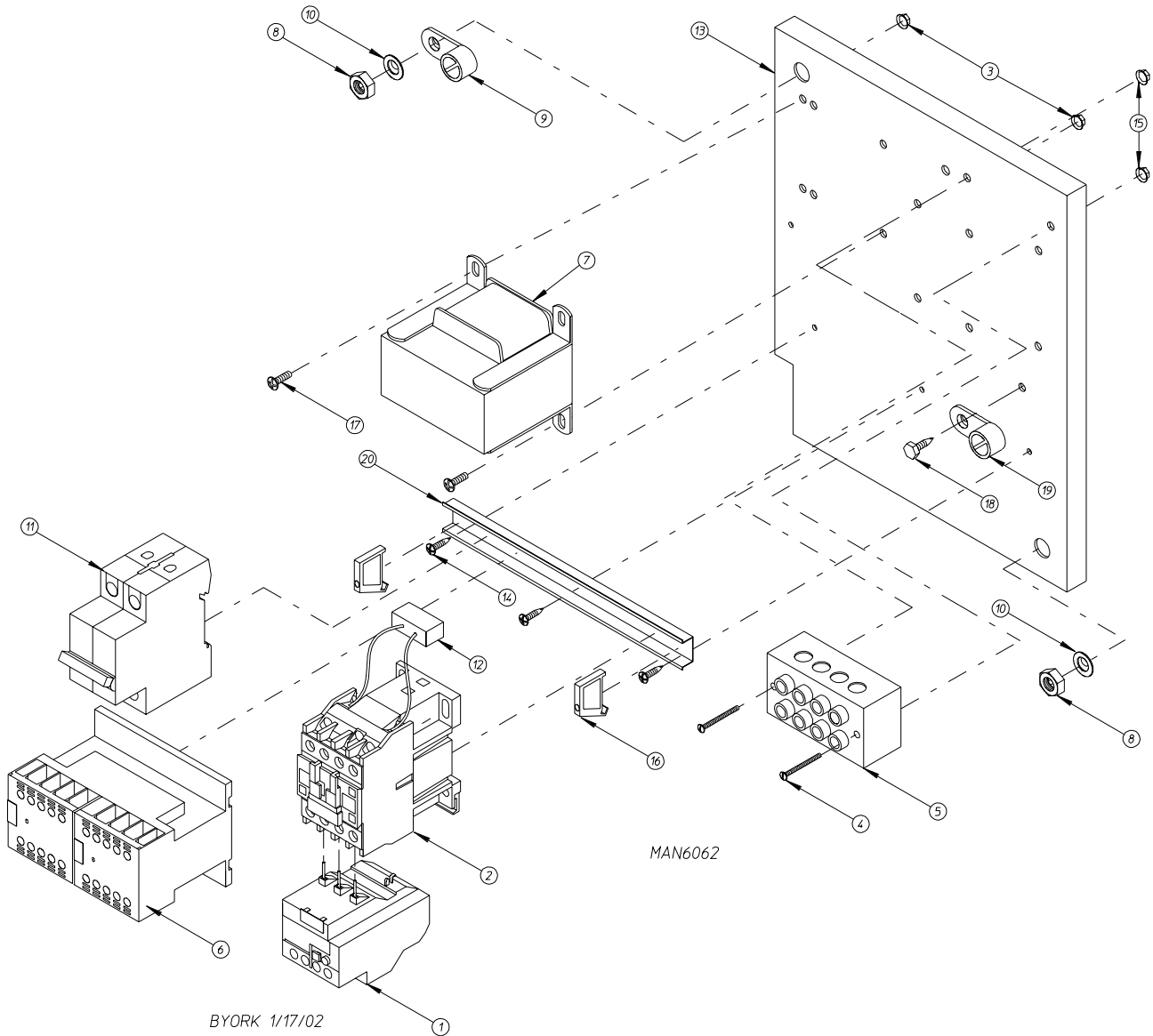
For 208-240V Transformers

<u>Illus. No.</u>	<u>Part No.</u>	<u>Qty.</u>	<u>Description</u>
1	152002	1	1/4-20 Hex Nut
2	132465	1	3 HP Contactor - 24 VAC
3	151001	2	#8-32 Pal Nut
4	150009	2	#6-32 x 1-1/4" Phillips Round Head Machine Screw
5	120701	1	4-Position Power Distribution Block
6	132497	1	Reversing Contactor - 24 VAC
7	822745	1	208-240V Transformer Assembly
8	137015	1	Arc Suppressor (A.S.) Board
9	153021	1	1/4" Ext/Int Shake Proof Washer
10	152004	1	5/16-18 Hex Nut
11	153002	1	5/16" Lock Washer
12	136008	2	Fuse Block/Holder
13	136057	2	1/2-Amp (Slo-Blo) Fuse
14	332346	1	Contactor/Relay Mounting Panel ONLY
15	150301	5	#8-18 x 7/16" Phillips Pan Head TEK Screw
16	151000	2	#6-32 Pal Nut
17	120765	2	End Stop/Bracket
18	150108	2	#8-32 x 1/2" Pan Head Machine Screw
19	121010	1	L-70 Ground Lug
20	120768	7-3/4"	Din Mounting Rail (sold by the inch)
21	112075	1	Ground Label
22	112068	1	3-Phase (3 ϕ) Power Input Label
23	132439	1	Overload
	825267	1	Contactor Wiring...Not Illustrated
	829053	1	Relay Panel Wiring...Not Illustrated



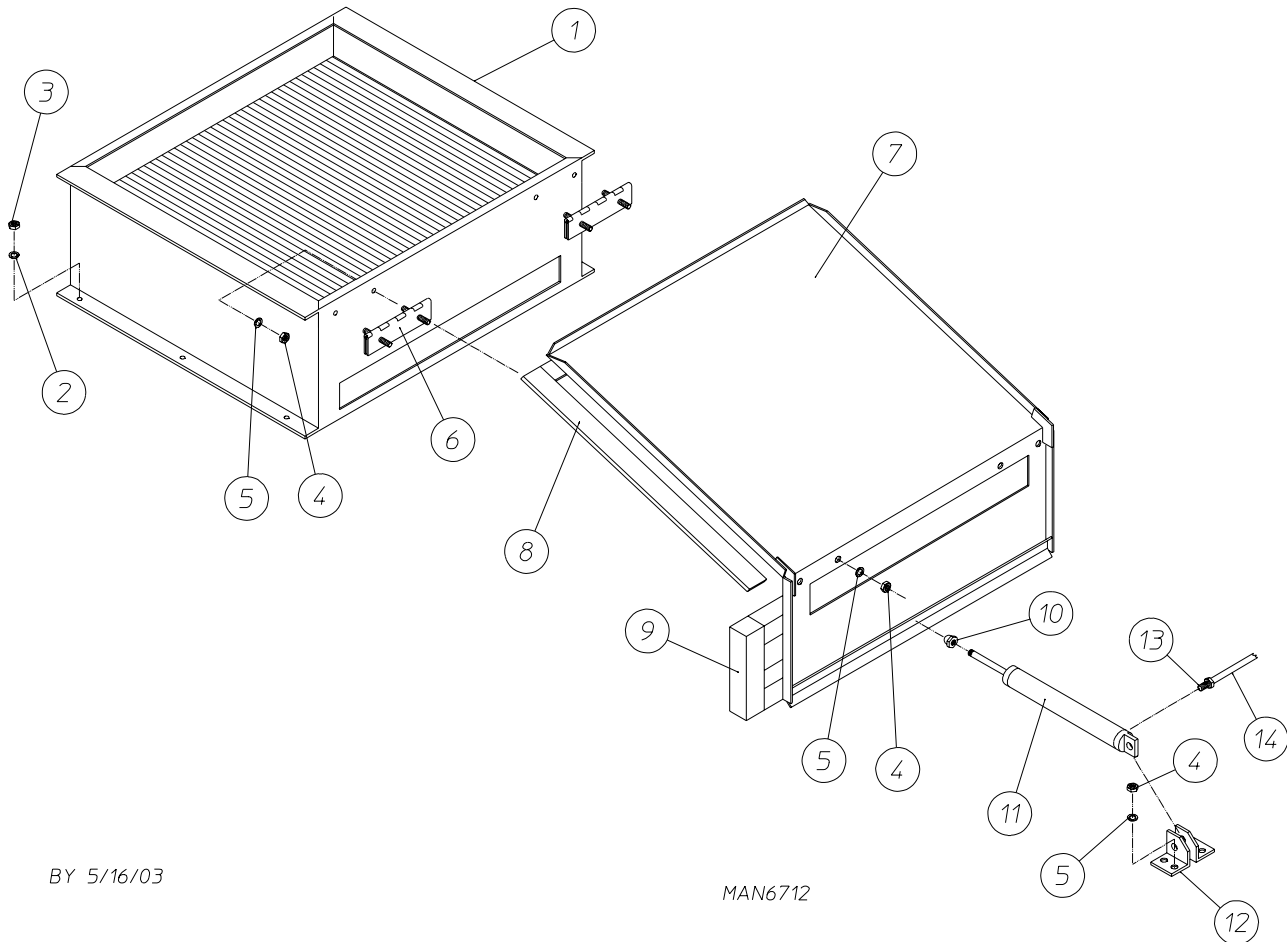
For 380-416V Transformers

<u>Illus. No.</u>	<u>Part No.</u>	<u>Qty.</u>	<u>Description</u>
1	132467	1	9-13-amp Overload
2	132465	1	10 hp Contactor - 24 VAC
3	151001	2	#8-32 Pal Nut
4	150009	2	#6-32 x 1-1/2" Phillips Round Head Machine Screw
5	120701	1	4-Position Power Distribution Block
6	132497	1	"Kline" Reversing Contactor
7	801580	1	Transformer (380-416 volt/3 ϕ)
8	152004	2	5/16-18 Hex Nut
9	121012	1	Ground Lug
10	153002	2	5/16" Lock Washer
11	136008	1	Fuse Block/Holder
12	136057	1	1/2-amp (Slo-Blo) Fuse
13	332346	1	Contactor/Relay Mounting Panel ONLY
14	150301	4	#8-18 x 7/16" Phillips Pan Head TEK Screw
15	151000	2	#6-32 Pal Nut
16	120765	2	End Stop/Bracket
17	150108	2	#8-32 x 1/2" Pan Head Machine Screw
18	150297	1	#10 x 1/2" Hex Washer TEK Screw
19	121010	1	L-70 Ground Lug
20	120768	7-3/4"	Din Mounting Rail (sold by the inch)
	830180	1	Relay Panel Wiring...Not Illustrated
	825267	1	Drive/Blower Motor Contactor Wiring...Not Illustrated



For 460-480V Transformers

<u>Illus. No.</u>	<u>Part No.</u>	<u>Qty.</u>	<u>Description</u>
1	132467	1	9-13-amp Overload
2	132465	1	10 hp Contactor - 24 VAC
3	151001	2	#8-32 Pal Nut
4	150009	2	#6-32 x 1-1/2" Phillips Round Head Machine Screw
5	120701	1	4-Position Terminal Block
6	132497	1	"Kline" Reversing Contactor
7	830193	1	460-480V Transformer Assembly
8	152004	2	5/16-18 Hex Nut
9	121012	1	Ground Lug
10	153002	2	5/16" Lock Washer
11	135501	1	2-Pole-1-Amp Circuit Breaker
12	137015	1	Arc Suppressor (A.S.)
13	332346	1	Relay Panel
14	150301	4	#8-18 x 7/16" Phillips Pan Head TEK Screw
15	151000	2	#6-32 Pal Nut
16	120765	2	End Stop/Bracket
17	150108	2	#8-32 x 1/2" Pan Head Machine Screw
18	150297	1	#10 x 1/2" Hex Washer TEK Screw
19	121010	1	L-70 Ground Lug
20	120768	7-3/4"	Din Mounting Rail (sold by the inch)
	830192	1	Relay Panel Wiring...Not Illustrated
	825267	1	Drive/Blower Motor Contactor Wiring...Not Illustrated

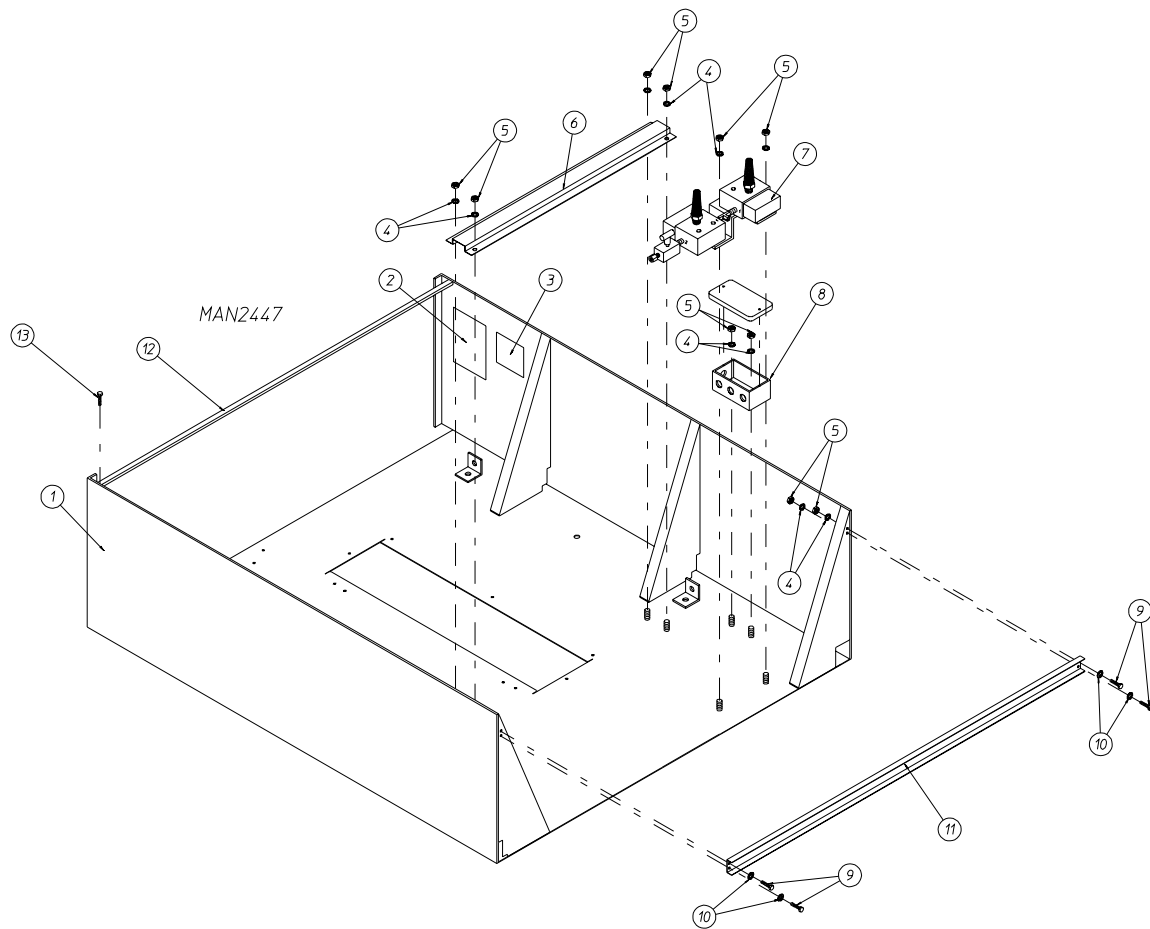


BY 5/16/03

MAN6712

Illus. No.	Part No.	Qty.	Description
1	165017	1	Steam Coil ONLY
2	153002	6	5/16" Lock Washer
3	152004	6	5/16-18 Hex Nut
4	152005	26	3/8-16 Hex Nut
5	153007	26	1/4" Lock Washer
6	820321	2	Steam Damper Hinge Assembly
7	820994	1	Steam Damper Assembly (includes illus. nos. 7, 10, and 11)
8	115995	96	Steam Damper Gasket (sold by the inch)
9	102350	2	Steam Damper Foam (68-1/2" length)
10	151007	1	7/16-20 Stainless Steel Acorn Nut
11	100499	1	1-1/2" Bore x 3" Stroke Piston
12	100500	1	Piston Support Bracket
13	100472	1	1/4" x 1/8" Connector
14	143110	1	1/4" Tubing (sold by the foot)

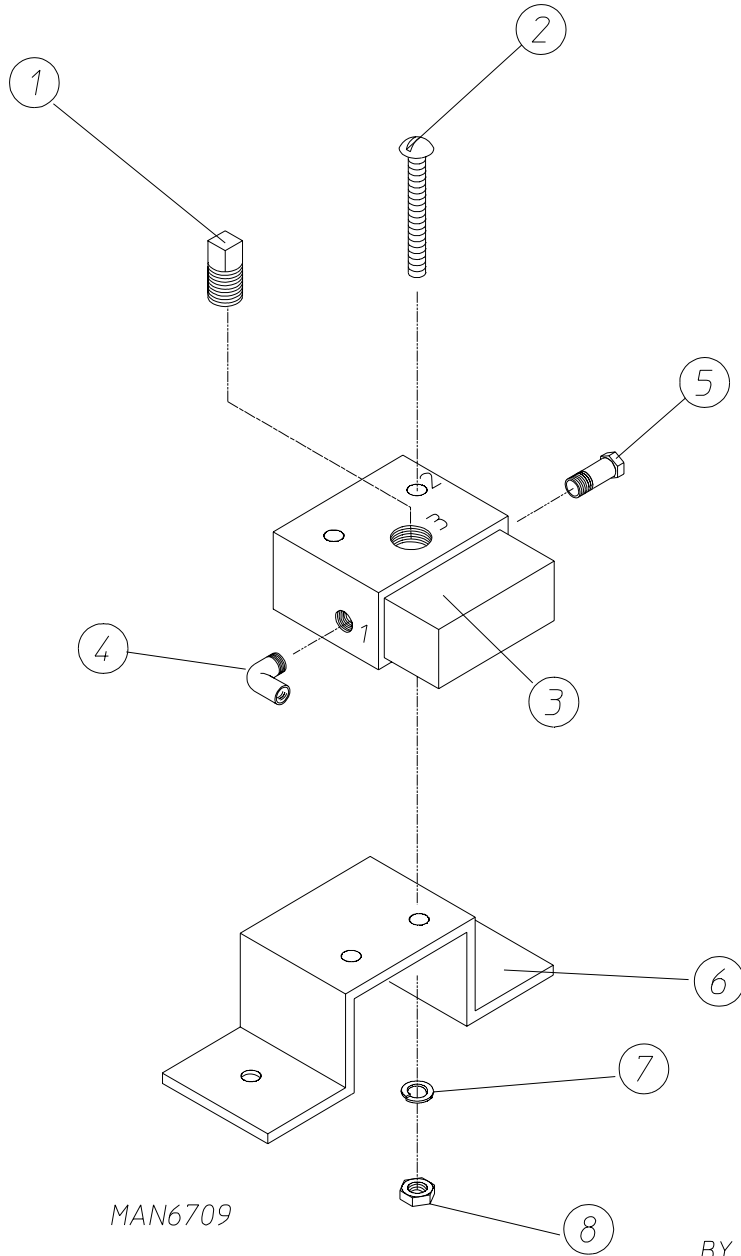
(refer to **Top Console Assembly** on **page 35**)



<u>Illus. No.</u>	<u>Part No.</u>	<u>Qty.</u>	<u>Description</u>
1*	821085	1	Top Console Assembly ONLY (for gas models Only)
	821086	1	Top Console Assembly ONLY (for steam models Only)
2	114521	1	Phase 7 OPL Program Location Summary Label (for microprocessor models Only)
3	-----	1	Dryer Data Label (not for resale by ADC)
4	153007	12	1/4" Lock Washer
5	152005	12	1/4-20 Hex Nut
6	883864*	1	32" Wire Channel
7	821105	1	Pneumatic Valve Assembly ONLY (for gas models Only) (refer to Pneumatic Valve Assembly on page 36)
	821104	1	Pneumatic Valve Assembly ONLY (for steam models Only) (refer to Pneumatic Valve Assembly on page 37)
8	121104	1	2" x 4" Junction Box ONLY
	121105	1	Junction Box Cover ONLY
9	150615	4	1/4-20 x 3/4" Bolt
10	153018	4	1/4" Flat Washer
11	883865*	1	Console Gusset Brace
12	883866*	1	Control Door Hinge Channel
13	150300	4	#10-16 x 1/2" Hex Washer TEK Screw

* Specify color when ordering.

For Gas Models ONLY

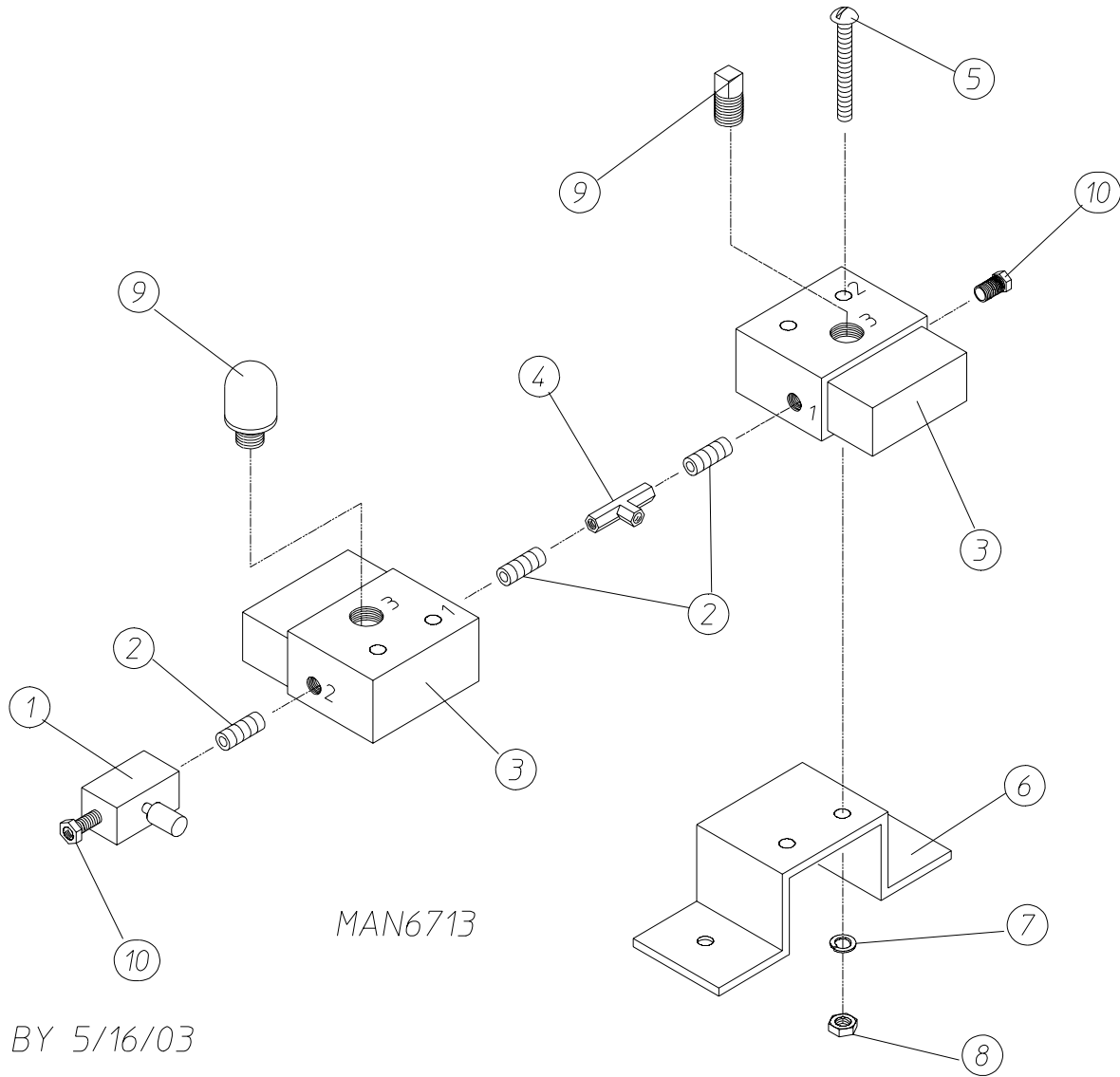


MAN6709

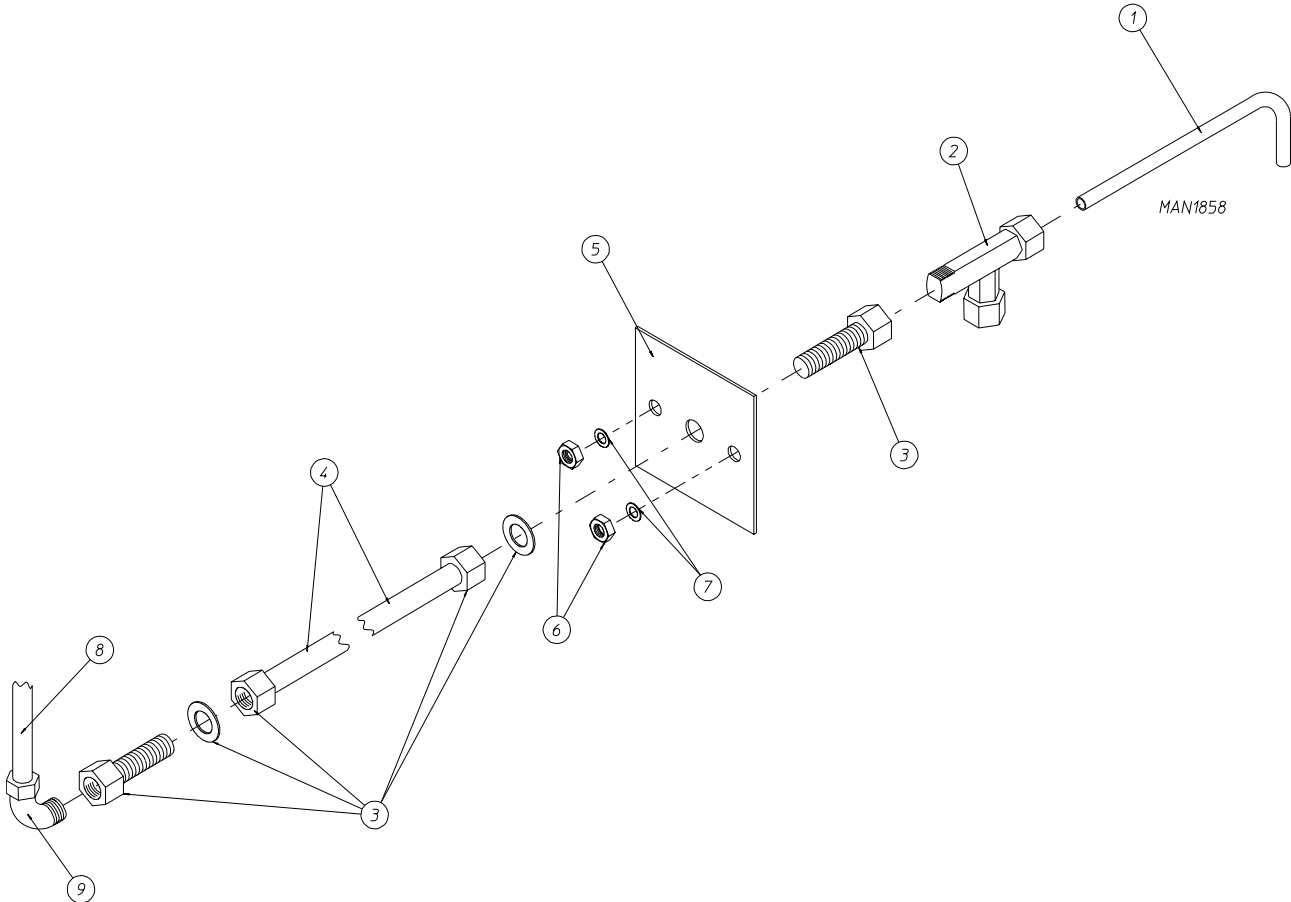
BY 5/16/03

<u>Illus. No.</u>	<u>Part No.</u>	<u>Qty.</u>	<u>Description</u>
1	143250	1	1/8" M.P.T. Brass Plug
2	150002	2	#6-32 x 1" Phillips Round Head Machine Screw
3	100498	1	3-Way Micro Valve ONLY - 24 VAC
	821105	1	Pneumatic Valve Assembly Complete (includes illus. nos. 1 through 8) For Gas Models ONLY
4	143149	1	1/4" Poly x 1/8" M.P.T. Elbow
5	100472	1	1/4" x 1/8" Connector
6	330987	1	Micro Valve Support Bracket ONLY
7	153010	2	#6 Star Washer
8	152000	2	#6-32 Hex Nut

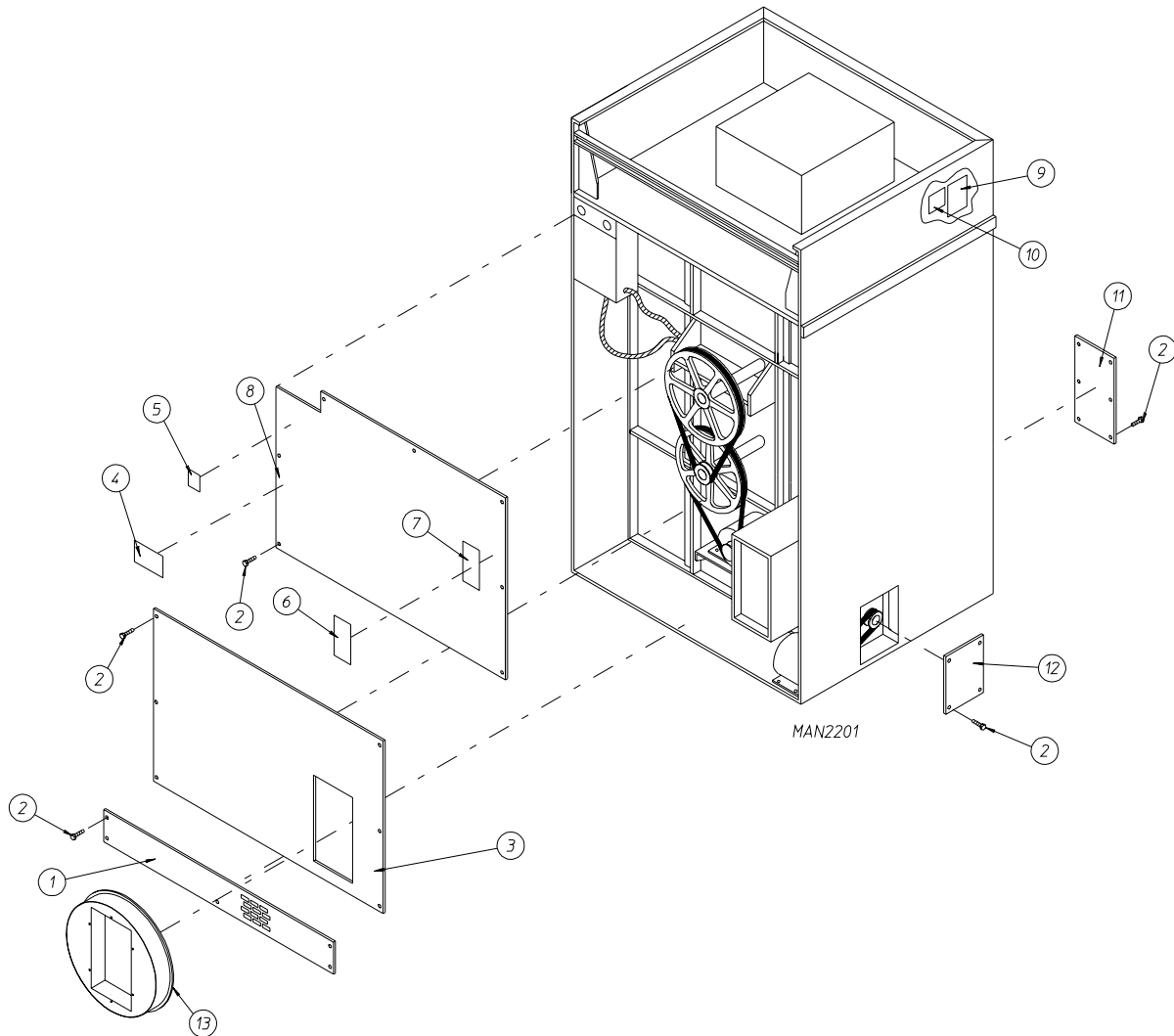
For Steam Models ONLY



<u>Illus. No.</u>	<u>Part No.</u>	<u>Qty.</u>	<u>Description</u>
1	100496	1	1/8" Needle Valve
2	143238	3	1/8" Close Nipple
3	100498	2	3-Way Micro Valve ONLY - 24 VAC
	821104	1	Pneumatic Valve Assembly Complete (includes illus. nos. 1 through 8) For Steam Models ONLY
4	143223	1	1/8" F.P.T. Brass Tee
5	150002	2	#6-32 x 1" Phillips Round Head Machine Screw
6	330987	1	Micro Valve Support Bracket ONLY
7	153010	2	#6 Star Washer
8	152000	2	#6-32 Hex Nut
9	100520	2	1/8" N.P.T. Silencer (muffler)
10	100472	2	1/4" x 1/8" Connector
11	143250	1	1/8" M.P.T. Brass Plug



<u>Illus. No.</u>	<u>Part No.</u>	<u>Qty.</u>	<u>Description</u>
1	332700	1	Air Jet Tube ONLY
2	143287	1	1/4" Compression x 1/8" M.P.T. Male Run Tee
3	143259	2	1/4" Compression x 1/8" F.P.T. Bulkhead Fitting
4	143100	36	1/4" Aluminum Tube (sold by the foot)
5	821081	1	Air Jet Mounting Plate ONLY (includes illus. nos. 1 through 9)
	332531	1	Air Jet Mounting Plate ONLY
6	152002	2	1/4-20 Hex Nut
7	153007	2	1/4" Lock Washer
8	143110	6	1/4" Poly-Flo Tubing (sold by the foot)
9	143149	1	1/4" x 1/8" M.P.T. 90° Elbow



<u>Illus. No.</u>	<u>Part No.</u>	<u>Qty.</u>	<u>Description</u>
1*	883862	1	Bottom Back Guard ONLY
2	150301	28	#8-18 x 7/16" Phillips Pan Head TEK Screw
3	821096	1	Middle Back Guard ONLY
4	112014	1	High Voltage Label ONLY
5	112017	1	"ADC Name, Address, Telephone Number" Label
6	112230	1	"Installation Instructions" Label
7	112519	1	"Routine Maintenance Schedule" Label
8	821095	1	Top Back Guard ONLY
9	114521	1	"Phase 7 OPL Program Location Summary" Label
10	-----	1	Dryer Data Label (not for resale by ADC)
11*	883868	1	Blower Housing Front Access Panel
12*	883869	1	Side Access Panel
13	821092	1	Square Duct to Round Duct Transition Piece Assembly
	117505	**	Aluminum Duct Tape...Not Illustrated

* Specify color when ordering.

** As required.

DSI BURNER ORIFICE SPECIFICATION*				
Qty.	Natural Gas		L.P. Gas	
	D.M.S.	Part No.	D.M.S.	Part No.
4	#2	140839	#29	140820
* Consult factory for elevations over 2,000 feet.				

DSI Burner Assembly Specifications		
Btu/H Rating	Natural Gas Part No.	L.P. Gas Part No.
550,000	835037	821960
<p>NOTES:</p> <ol style="list-style-type: none"> 1. Burner assemblies <u>DO NOT</u> include burner orifices. They must be ordered. 2. When ordering burner assembly specify the <u>model number</u> and <u>serial number</u> of the dryer. 		

DSI L.P. KIT SPECIFICATION*
Kit Part No.
880978
* Consult factory for elevations over 2,000 feet.

NOTE: For Voltages of 380 or Above.

Step Down Transformer Application Listing (Reversing Relay Box)			
HEAT	VOLTAGE	WIRE SERVICE	TRANSFORMER PART NUMBER
			MICROPROCESSOR MODELS
GAS / STEAM	380	3 or 4	132059
	416	3 or 4	132062
	440	3 or 4	132056
	460 / 480	3 or 4	132053
	575	3	132050

<u>Part No.</u>	<u>Description</u>
114006	“WARNING - Fire Hazards” Label
112098	“Check Rotation” Label
112288	“CAUTION - Lint Compartment” Label
114001	“CAUTION - Exhaust Lint Screen” Label
120102	3/8” Straight (BX) Connector
120111	1/2” Liquidtite 45° Connector
120400	3/8” Red Jacket (BX) Insulator
120500	3/8” Jiffy Clip (BX retainer clip)
120600	3/8” Greenfield (BX)
120800	1/4” In-Line Connector
120802	Red Butt Connector
120902	#74B Wire Nut
120903	Crimp-On Wire Nut
120904	Red Wire Nut
121014	1/4” Insulated (female) Terminal
121499	5-1/2” Harness Tie
121500	8” Harness Tie
122804	15” Manometer (water column test gauge)
404500	Almond Brush-In-Cap Bottle Touch-Up Paint
404502	White Brush-In-Cap Bottle Touch-Up Paint
404506	Beige Brush-In-Cap Bottle Touch-Up Paint
404507	Cornflower Blue Brush-In-Cap Bottle Touch-Up Paint
880200	Electrical Terminal (assortment) Kit

