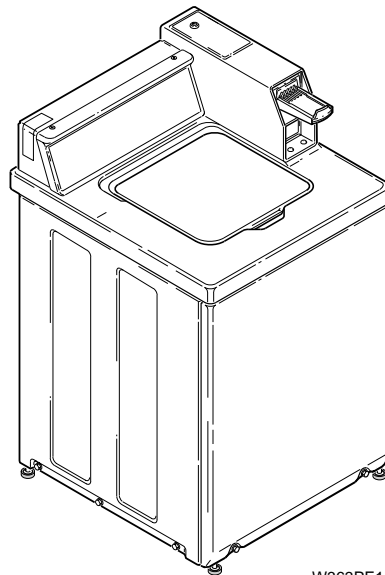


Automatic Washers

Metered and Nonmetered
(See Page 3 for Model Numbers)



W363PE1A

Table of Contents

Title	Page
Parts Ordering Information	2
Nameplate Location	2
Model Identification	3
Timer, Case and Plate	4
Timer, Meter Case and Service Door	6
Meter Case and Service Door	8
Coin Drop, Meter Case and Service Door	10
Timer Case	12
Security Case and Card Reader	14
Control Panel, Control Hood and Controls	16
Control Panel, Control Hood and Controls	18
Cabinet Top and Loading Door	20
Loading Door Switch	22
Inlet Hose, Fill Hose, Mixing Valve and Mounting Bracket	24
Motor, Mounting Bracket, Belt and Idler Assembly	26
Agitator, Drive Bell, Seal Kit, Washtub and Hub	28
Outer Tub, Cover, Pressure Hose and Counterweight	30
38826P Transmission Assembly	32
Drain Hose and Siphon Break	34
Pump Assembly, Bracket, Hoses and Siphon Break Kit	36
Weldment and Bearing Assembly, Brake and Pulley	38
Front Panel, Base Assembly and Cabinet Kit	40
Wires	42
Mixing Valve and Motor Disconnect Blocks, Terminals and Terminal Extractor Tool	42
Power Cord and Terminals	44
Special Tools	46
Special Tools	48
Wire Harnesses	50
Parts Index	51

© Copyright 1998, Alliance Laundry Systems LLC

All rights reserved. No part of the contents of this book may be reproduced or transmitted in any form or by any means without the expressed written consent of the publisher.

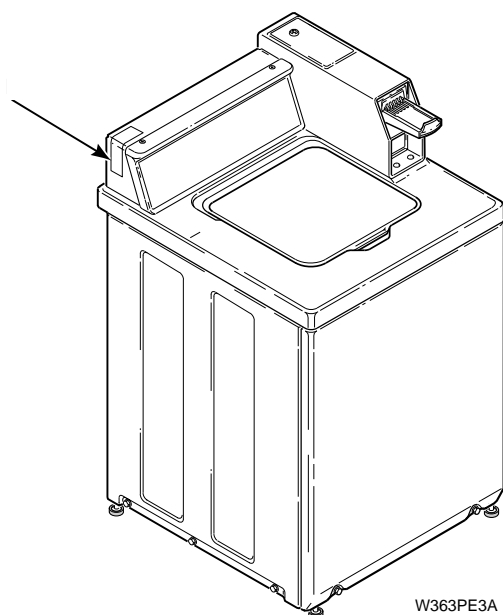
Parts Ordering Information

If literature or replacement parts are required, contact the source from whom the machine was purchased or contact Alliance Laundry Systems at (920) 748-3950 for the name and address of the nearest authorized parts distributor.

For technical assistance, call (920) 748-3121.

Nameplate Location

When calling or writing about your product, be sure to mention model and serial numbers. Model and serial numbers are located on nameplate(s) as shown.



Model Identification

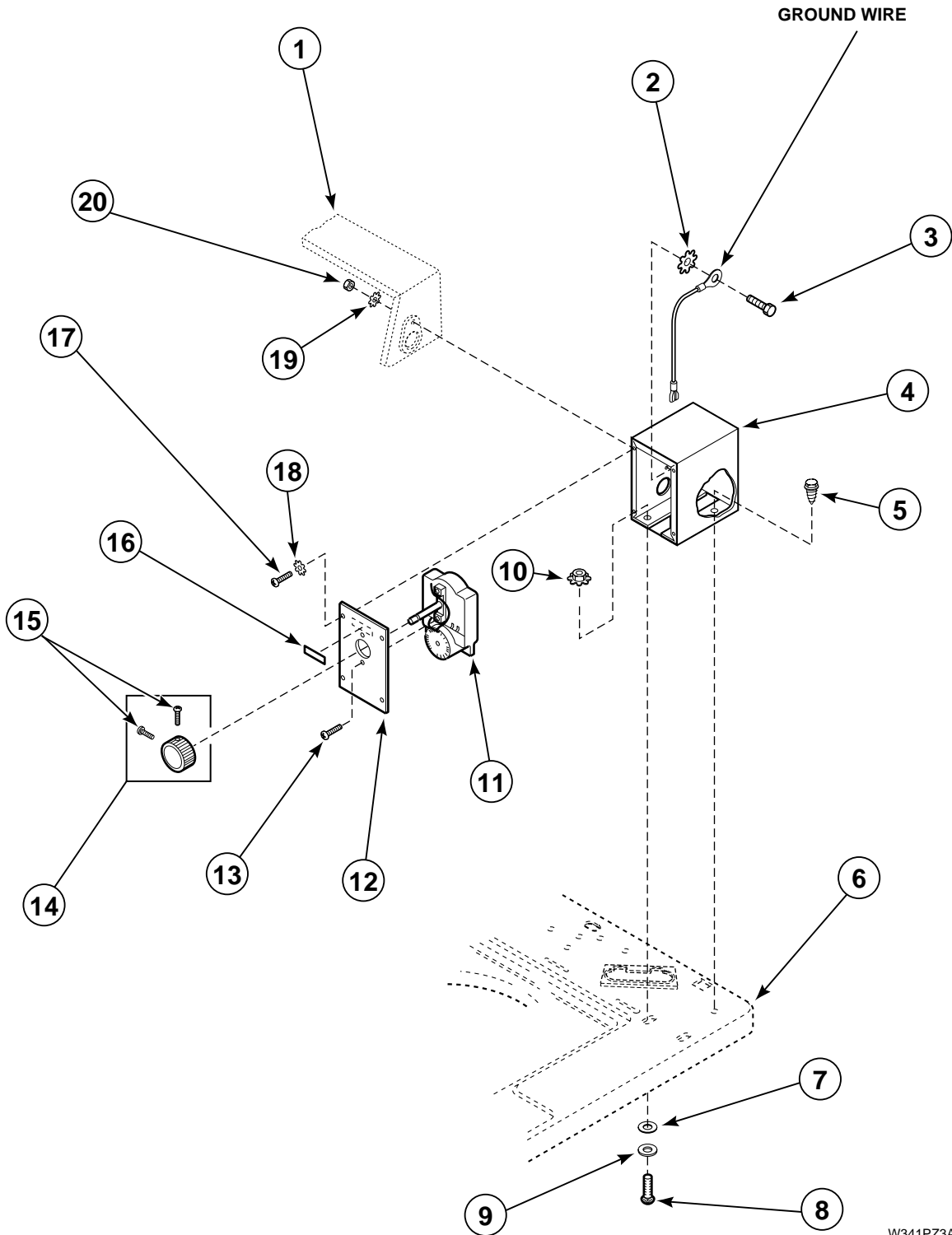
Information in this manual is applicable to these washers

Washer Model	Nonmetered Model	Metered Model	Electronic Display Control	Card Reader	One Speed Motor	Two Speed Motor	Porcelain Washtub	Stainless Steel Washtub
HWT020*A	X					X	X	
HWT020*C	X					X	X	
HWT110*A		X			X		X	
HWT110*C		X			X		X	
HWT120*A		X				X	X	
HWT120*C		X				X	X	
JWT110*A		X				X	X	
SWT020*A	X					X	X	
SWT021*A	X					X		X
SWT110*A		X			X		X	
SWT111*A		X			X			X
SWT120*A		X				X	X	
SWT121*A		X				X		X
SWT210*A		X			X		X	
SWT220*A		X				X	X	
SWT221*A		X				X		X
SWT320*A		X				X	X	
SWT321*A		X				X		X
SWT420*A			X			X	X	
SWT420*D			X			X	X	
SWT421*A			X			X		X
SWT421*D			X			X		X
SWT520*A			X			X	X	
SWT521*A			X			X		X
SWT620*A				X		X	X	
SWT620*C				X		X	X	
SWT620*D				X		X	X	
SWT621*C				X		X		X
SWT621*D				X		X		X
SWT720*A				X		X	X	
SWT721*A				X		X		X
UWT021*A	X					X		X

* Add Letter To Designate Color. L – Almond W – White

Timer, Case and Plate

(Models HWT020*A, HWT020*C, SWT020*A, SWT021*A and UWT021*A)



W341PZ3A

* Add Letter To Designate Color. L – Almond W – White

Timer, Case and Plate

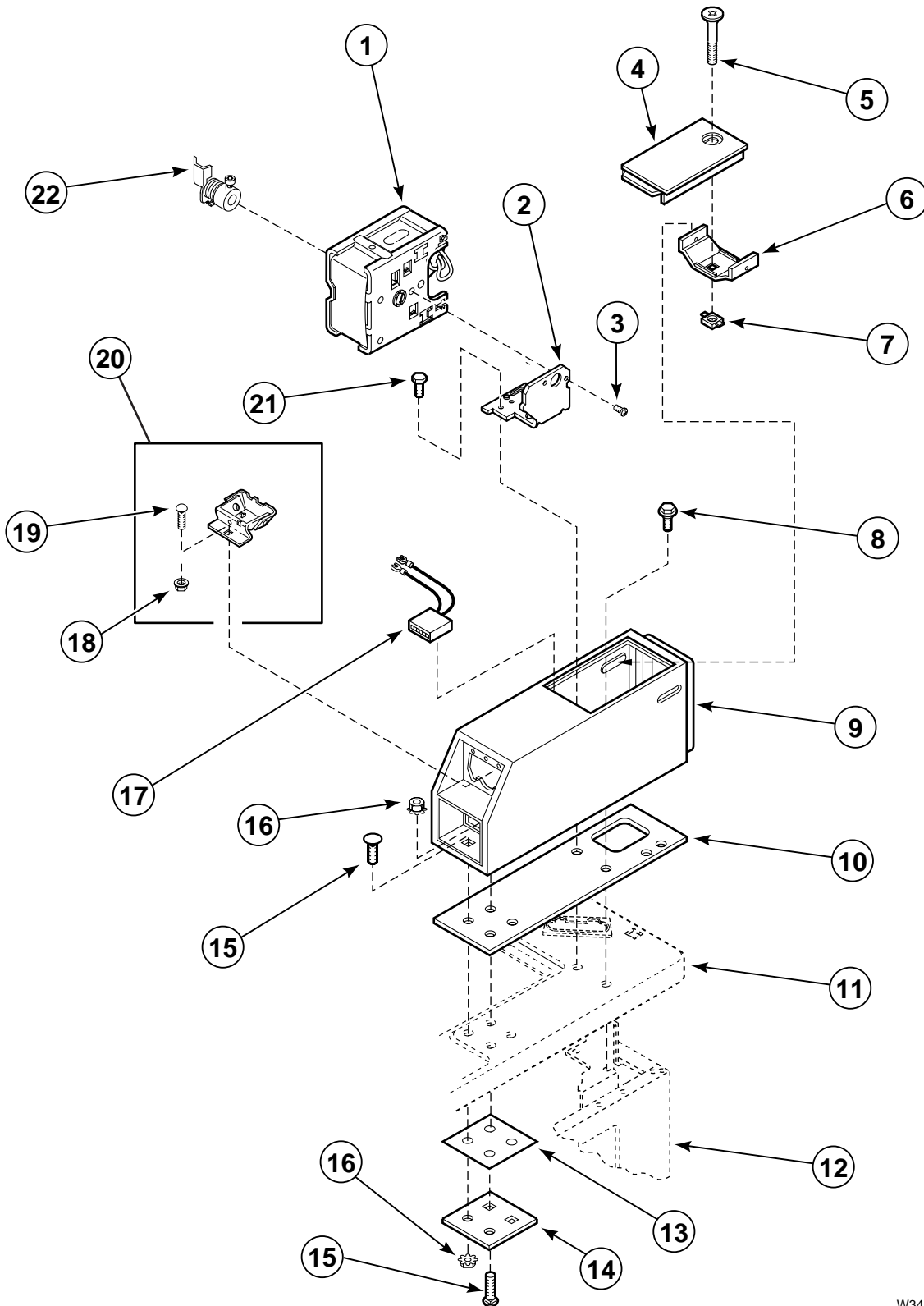
(Models HWT020*A, HWT020*C, SWT020*A, SWT021*A and UWT021*A)

REF	PART #	DESCRIPTION	COMMENTS
1	37075*	Control Hood	
2	91093	Lockwasher	
3	02916	Cap Screw	
4	37733W	Timer Case	
5	23962	Screw	
6	39185*	Cabinet Top	
7	23225	Washer	Vinyl
8	02505	Carriage Bolt	
9	30627	Washer	
10	29786	Nut	
11	28716	Timer Assembly	
12	31864W	Timer Plate	
13	27328	Screw	
14	26256	Timer Knob Assembly	
15	20268	Screw	
16	53738	Push-to-Start Sticker	
17	51778	Screw	
18	21734	Lockwasher	
19	02431	Lockwasher	
20	52566	Nut	

* Add Letter To Designate Color. L – Almond W – White

Timer, Meter Case and Service Door

(Models HWT110*A, HWT110*C, HWT120*A, HWT120*C, JWT110*A, SWT110*A, SWT111*A, SWT120*A, SWT121*A, SWT210*A, SWT220*A, SWT221*A, SWT320*A and SWT321*A)



W345PZ3B

* Add Letter To Designate Color. L – Almond W – White

Timer, Meter Case and Service Door

(Models HWT110*A, HWT110*C, HWT120*A, HWT120*C, JWT110*A, SWT110*A, SWT111*A, SWT120*A, SWT121*A, SWT210*A, SWT220*A, SWT221*A, SWT320*A and SWT321*A)

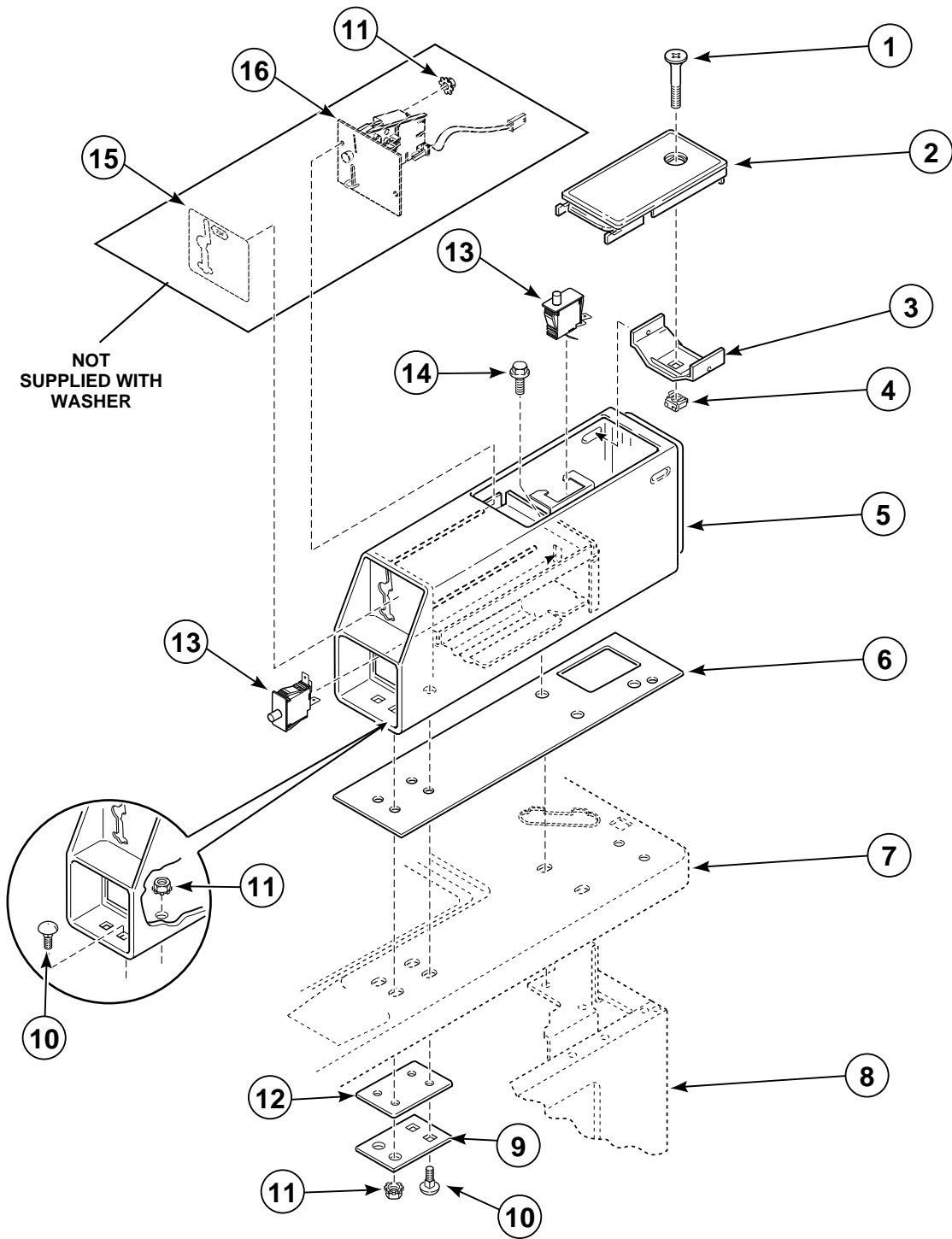
REF	PART #	DESCRIPTION	COMMENTS
1	31111P	Timer	Models HWT110*A, HWT110*C, HWT120*A, HWT120*C, JWT110*A, SWT110*A, SWT111*A, SWT120*A and SWT121*A
	34601P	Timer	Models SWT210*A, SWT220*A and SWT221*A
	34602	Timer	Models SWT320*A and SWT321*A
2	35249	Timer Bracket	
3	21720	Screw	
4	35798*	Service Door	
5	503673	Screw	
6	30642	Locking Bracket	
7	30647	Retainer Nut	
8	29277	Shoulder Screw	
9	524P3*	Meter Case	
10	26354 †	Meter Case Gasket	
11	39167*P	Cabinet Top	
12	34475*P	Cabinet Kit	
13	35526 †	Gasket	
14	35525 †	Bracket	
15	02505 †	Carriage Bolt	
16	29786 †	Locknut	
17	62113P	Counter Kit	Models SWT320*A and SWT321*A
18	29796	Nut	
19	29651	Bolt	
20	523P3 †	Coin Funnel Kit	
21	36048	Screw	
22	29503	Clutch	

* Add Letter To Designate Color. L – Almond W – White

†Parts with a dagger are included with 524P3 Meter Case

Meter Case and Service Door

(Models SWT420*A, SWT420*D, SWT421*A and SWT421*D)



W344PZ3A

* Add Letter To Designate Color. L – Almond W – White

Meter Case and Service Door

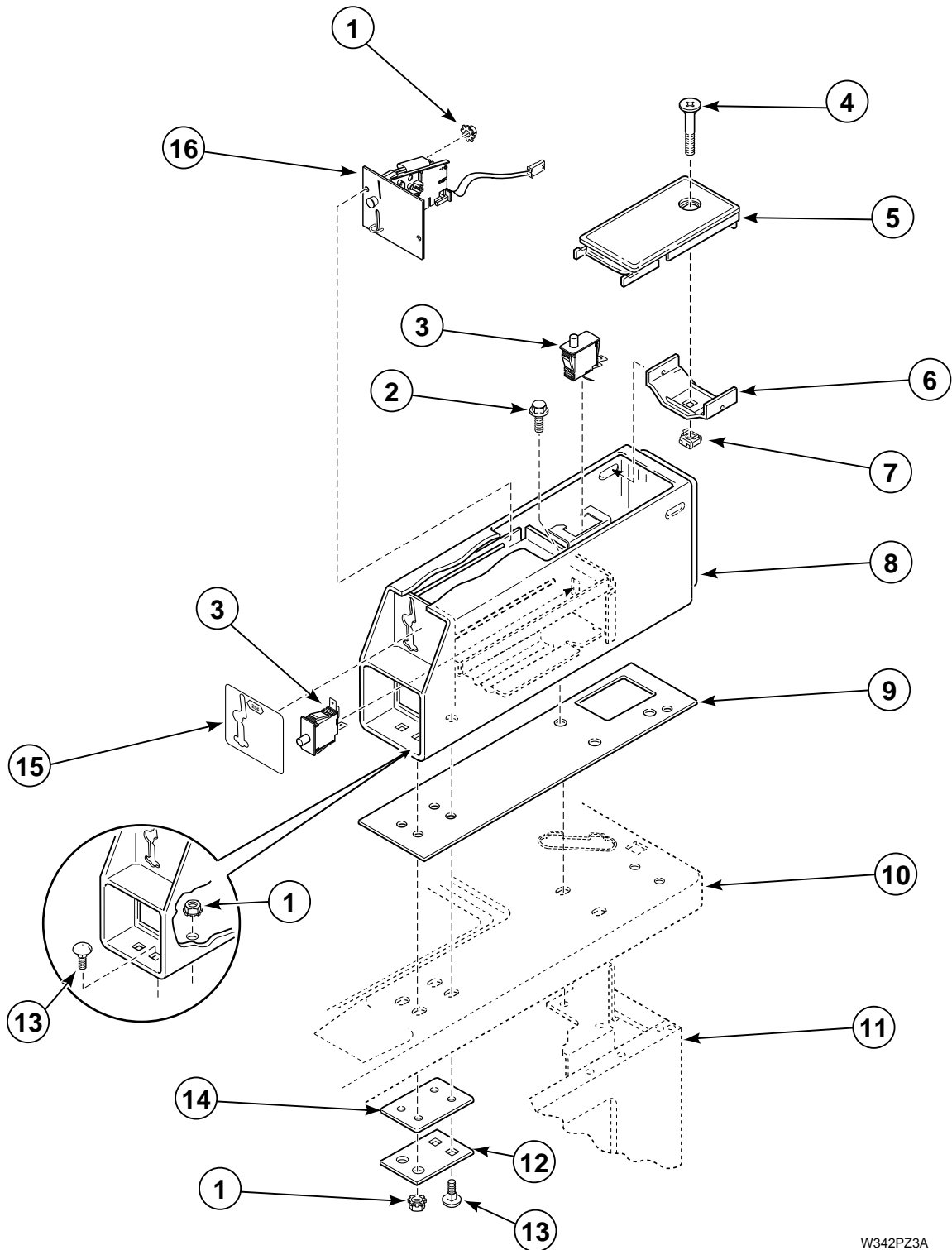
(Models SWT420*A, SWT420*D, SWT421*A and SWT421*D)

REF	PART #	DESCRIPTION	COMMENTS
1	503673	Screw	
2	35798*	Service Door	
3	30642	Bracket	
4	30647	Retainer Nut	
5	38724*	Meter Case	
6	26354	Gasket	
7	39167*P	Cabinet Top	
8	34475*P	Cabinet Kit	
9	35525	Bracket	
10	02505	Carriage Bolt	
11	29786	Locknut	
12	35526	Gasket	
13	504570	Switch	
14	36048	Screw	
15	38717	Front Overlay	Not Supplied With Washer
16	38479	Coin Drop Assembly	Not Supplied With Washer

* Add Letter To Designate Color. L – Almond W – White

Coin Drop, Meter Case and Service Door

(Models SWT520*A and SWT521*A)



W342PZ3A

* Add Letter To Designate Color. L – Almond W – White

Coin Drop, Meter Case and Service Door

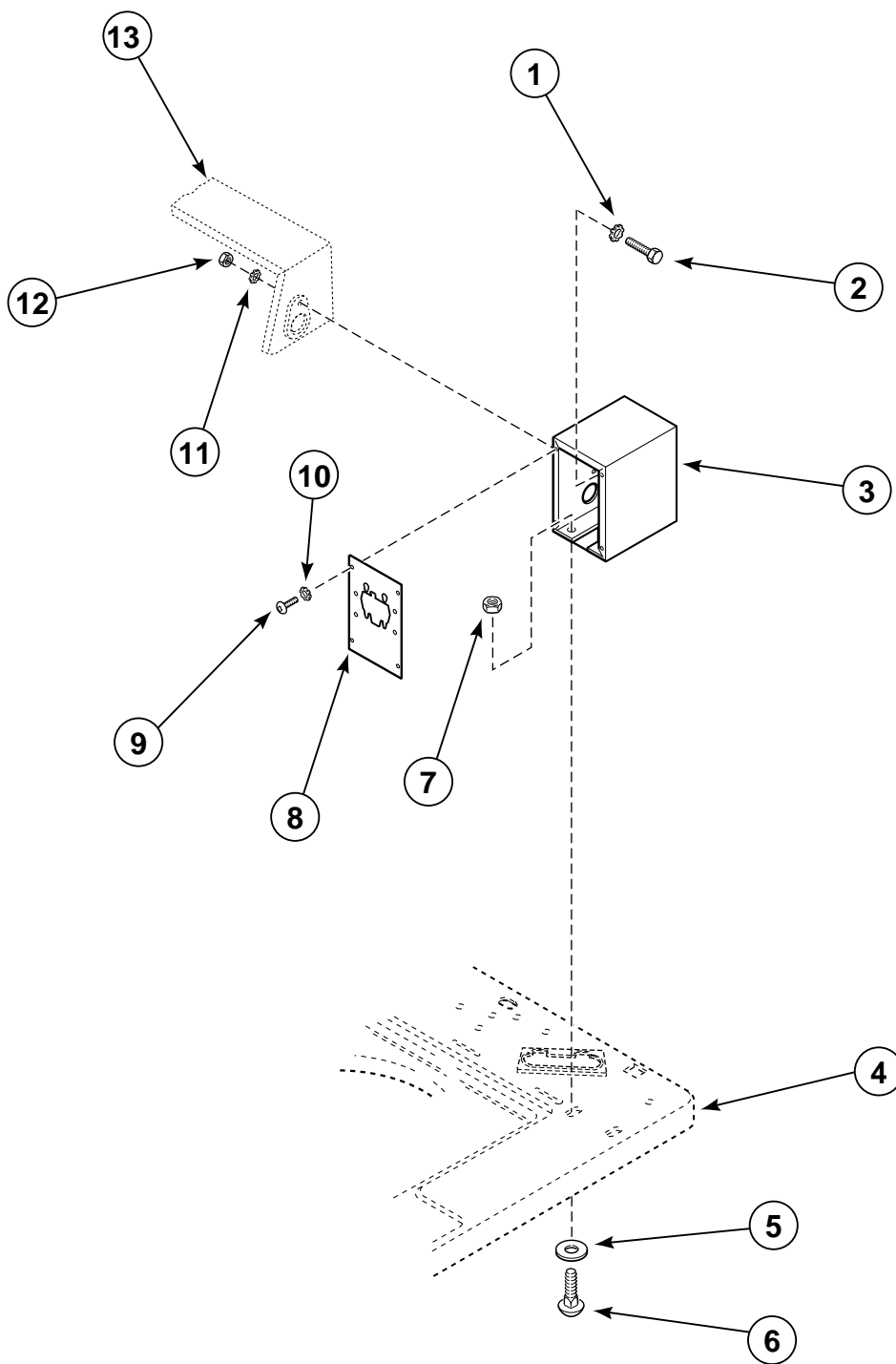
(Models SWT520*A and SWT521*A)

REF	PART #	DESCRIPTION	COMMENTS
1	29786	Locknut	
2	36048	Screw	
3	504570	Switch	
4	503673	Screw	
5	35798*	Service Door	
6	30642	Bracket	
7	30647	Retainer Nut	
8	38724*	Meter Case	
9	26354	Gasket	
10	39167*P	Cabinet Top	
11	34475*P	Cabinet Kit	
12	35525	Bracket	
13	02505	Carriage Bolt	
14	35526	Gasket	
15	38717	Front Overlay	
16	38479	Coin Drop Assembly	

* Add Letter To Designate Color. L – Almond W – White

Timer Case

(Models SWT620*A, SWT620*C, SWT620*D, SWT621*C and SWT621*D)



W383PZ3A

* Add Letter To Designate Color. L – Almond W – White

Timer Case

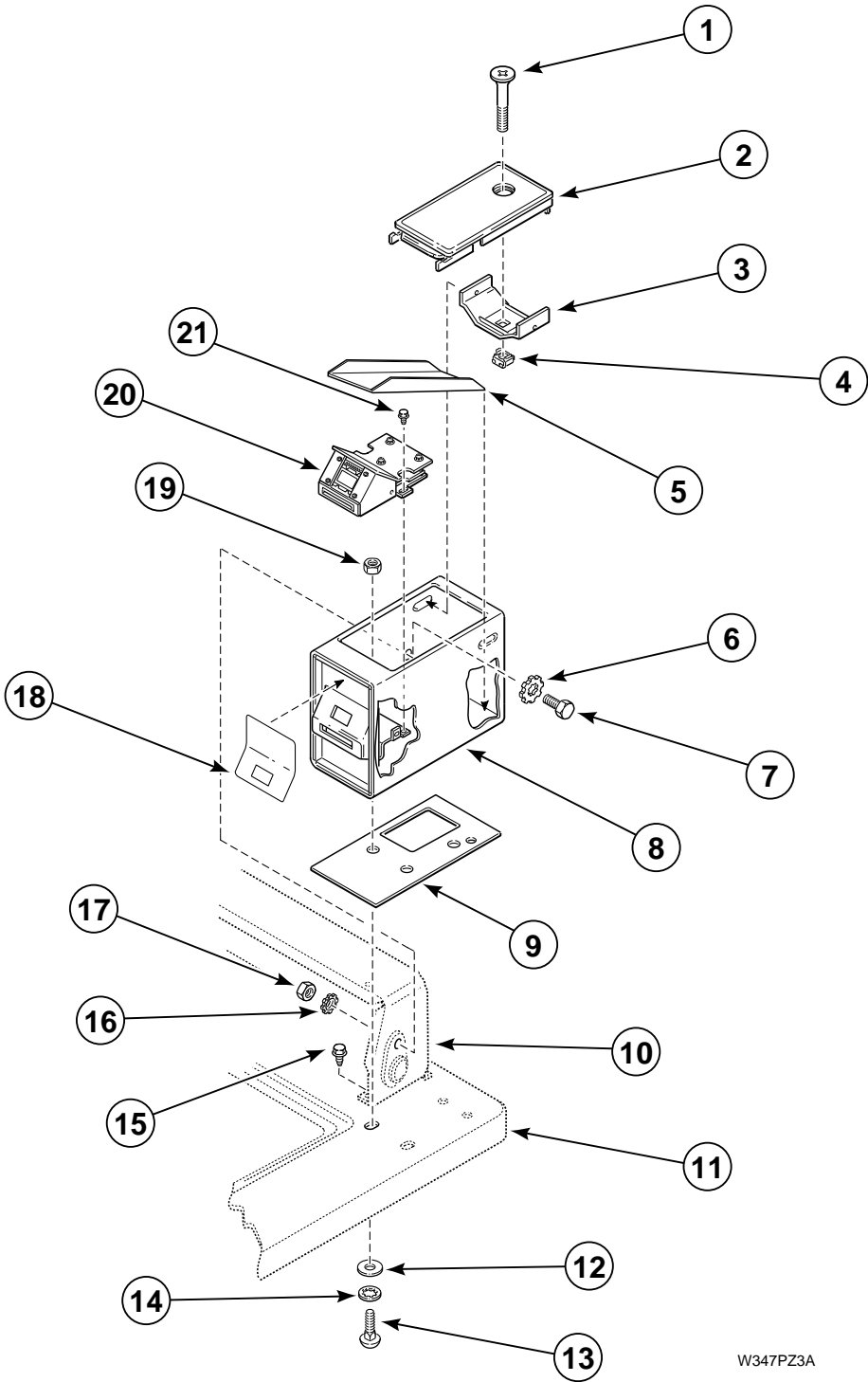
(Models SWT620*A, SWT620*C, SWT620*D, SWT621*C and SWT621*D)

REF	PART #	DESCRIPTION	COMMENTS
1	91093	Lockwasher	
2	02916	Cap Screw	
3	37733*	Timer Case	
4	39185*	Cabinet Top	
5	30627	Washer	
6	02505	Carriage Bolt	
7	29786	Locknut	
8	39491*	Timer Plate	Not used on Model SWT620*A
9	51778	Screw	Not used on Model SWT620*A
10	21734	Lockwasher	Not used on Model SWT620*A
11	02431	Lockwasher	
12	52566	Nut	
13	37075*	Control Hood	

* Add Letter To Designate Color. L – Almond W – White

Security Case and Card Reader

(Models SWT720*A and SWT721*A)



W347PZ3A

* Add Letter To Designate Color. L – Almond W – White

Security Case and Card Reader

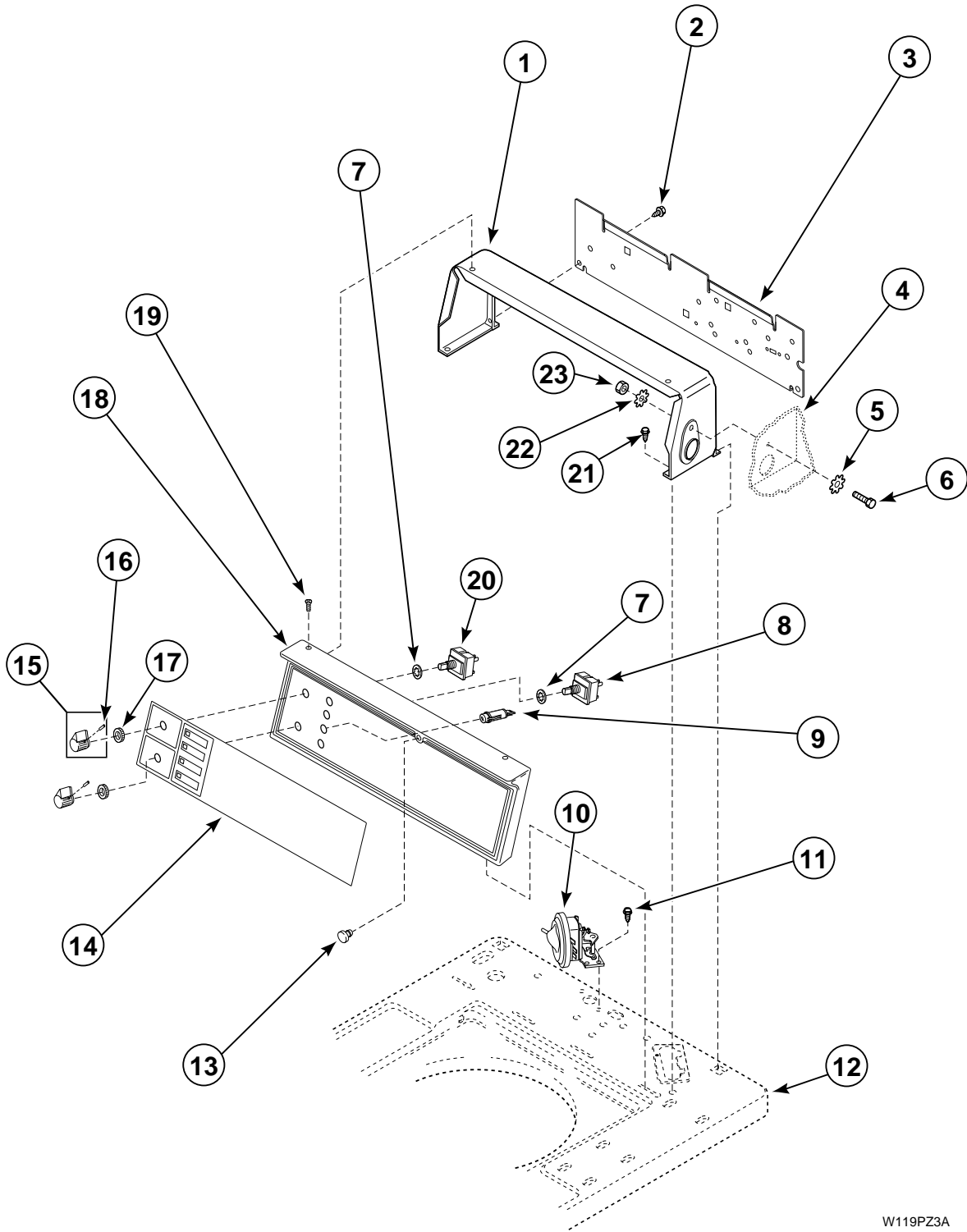
(Models SWT720*A and SWT721*A)

REF	PART #	DESCRIPTION	COMMENTS
1	503673	Screw	
2	35798*	Service Door	
3	30642	Bracket	
4	30647	Retainer Nut	
5	38754	Shield	
6	91093	Lockwasher	
7	02916	Screw	
8	38145*	Security Case	
9	37526	Gasket	
10	37075*	Control Hood	
11	39185*	Cabinet Top	
12	23225	Vinyl Washer	
13	02505	Carriage Bolt	
14	30627	Washer	
15	23962	Screw	
16	02431	Lockwasher	
17	52566	Locknut	
18	38192	Instruction Overlay	
19	29786	Locknut	
20	39685	Card Reader	
21	52909	Screw	

* Add Letter To Designate Color. L – Almond W – White

Control Panel, Control Hood and Controls

(Models HWT020*A, HWT020*C, HWT110*A, HWT110*C, HWT120*A, HWT120*C, JWT110*A, SWT020*A, SWT021*A, SWT110*A, SWT111*A, SWT120*A, SWT121*A, SWT210*A, SWT220*A, SWT221*A, SWT320*A, SWT321*A and UWT021*A)



W119PZ3A

* Add Letter To Designate Color. L – Almond W – White

Control Panel, Control Hood and Controls

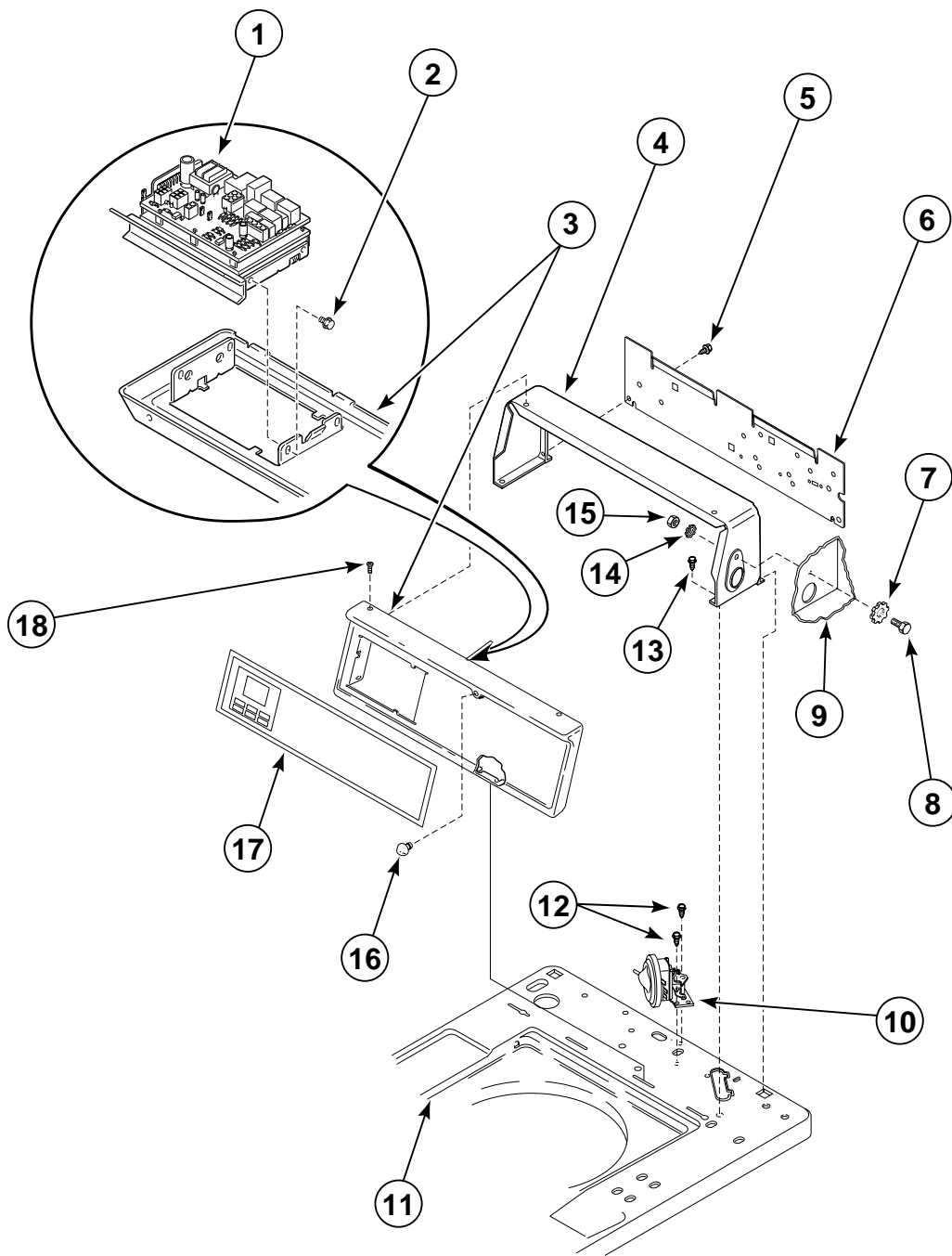
(Models HWT020*A, HWT020*C, HWT110*A, HWT110*C, HWT120*A, HWT120*C, JWT110*A, SWT020*A, SWT021*A, SWT110*A, SWT111*A, SWT120*A, SWT121*A, SWT210*A, SWT220*A, SWT221*A, SWT320*A, SWT321*A and UWT021*A)

REF	PART #	DESCRIPTION	COMMENTS
1	37075*	Control Hood	
2	23222	Screw	
3	38267	Control Hood Rear Cover	
4	37733*	Timer Case	Nonmetered Models
	524P3*	Meter Case	Metered Models
	38724*	Meter Case	Metered Models
5	91093	Lockwasher	
6	02916	Cap Screw	
7	91176	Lockwasher	
8	27762	Speed Switch	Two Speed Models
9	32464	Indicator Light	Three Required - Nonmetered Models, Two Required - Metered Models (one rinse and one spin)
	32466	Indicator Light	In Use
10	35889	Pressure Switch	
11	23962	Screw	
12	39167*P	Cabinet Top	Metered Models
	39185*	Cabinet Top	Nonmetered Models
13	32648	Bumper	
14	38940	Control Panel Overlay	Models SWT110*A, SWT111*A and SWT210*A
	38941	Control Panel Overlay	Models SWT020*A, SWT021*A, SWT120*A, SWT121*A, SWT220*A, SWT221*A, SWT320*A and SWT321*A
	38942	Control Panel Overlay	Model JWT110*A
	38944	Control Panel Overlay	Models HWT020*A and HWT120*A
	38945	Control Panel Overlay	Model HWT110*A
	38949	Control Panel Overlay	Model UWT021*A
	39503	Control Panel Overlay	Model HWT110*C
	39504	Control Panel Overlay	Models HWT020*C and HWT120*C
15	35182	Control Knob Assembly	
16	20310	Setscrew	
17	24205	Knurled Nut	
18	36521*	Control Panel Frame	
19	500226	Screw	Phillips Head
	35528	Screw	Torx Head
20	81799	Wash Temperature Switch	
21	501086	Screw	
22	02431	Lockwasher	
23	52566	Locknut	

* Add Letter To Designate Color. L – Almond W – White

Control Panel, Control Hood and Controls

(Models SWT420*A, SWT421*A, SWT420*D, SWT421*D, SWT520*A, SWT521*A, SWT620*A, SWT620*C, SWT620*D, SWT621*C, SWT621*D, SWT720*A and SWT721*A)



W196PZ3A

* Add Letter To Designate Color. L – Almond W – White

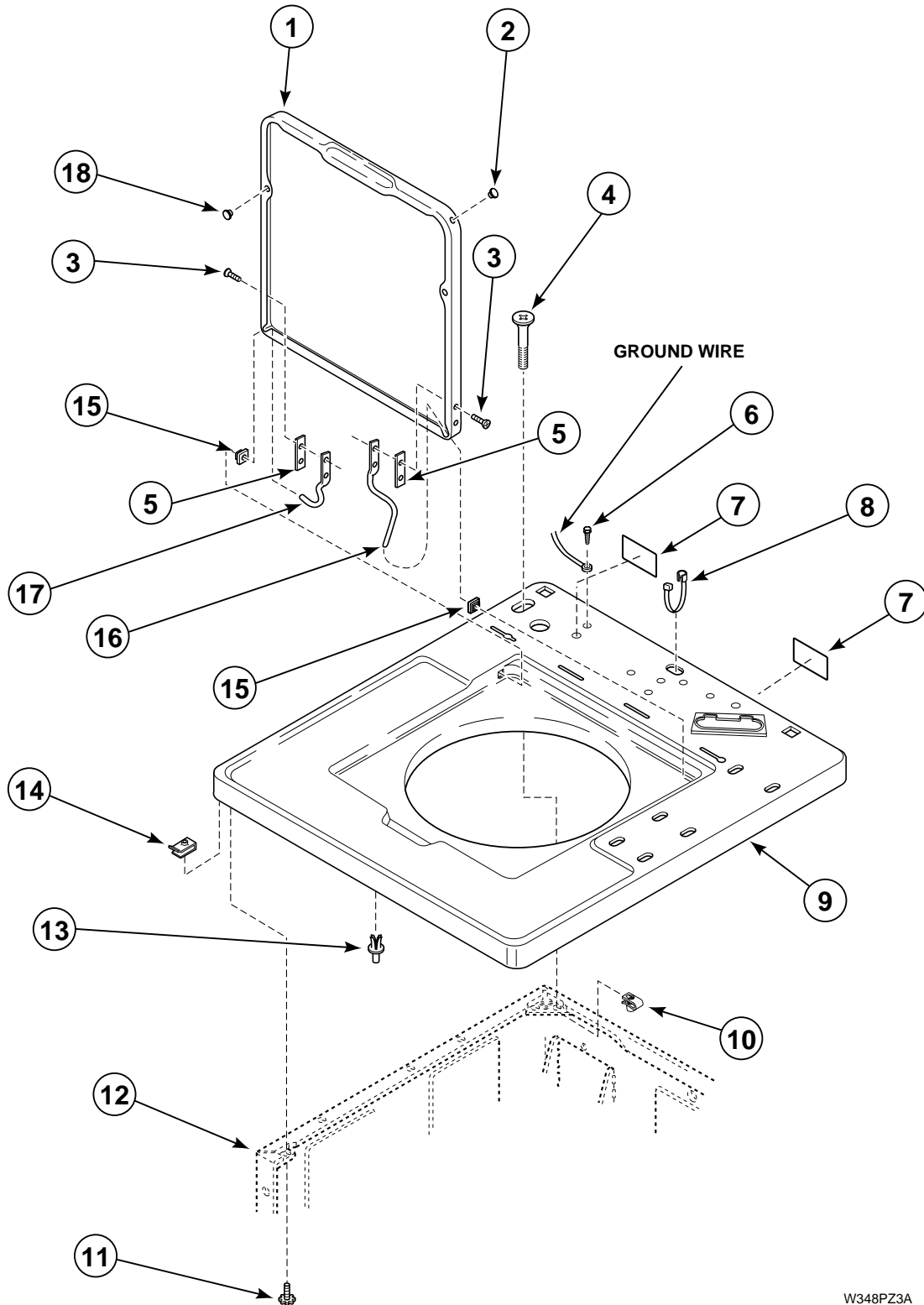
Control Panel, Control Hood and Controls

(Models SWT420*A, SWT421*A, SWT420*D, SWT421*D, SWT520*A, SWT521*A, SWT620*A, SWT620*C, SWT620*D, SWT621*C, SWT621*D, SWT720*A and SWT721*A)

REF	PART #	DESCRIPTION	COMMENTS
1	38188P	Control and Shield	
2	501524	Screw	
3	36097*	Control Panel Frame	
4	37075*	Control Hood	
5	23222	Screw	
6	38267	Control Hood Rear Panel	
7	91093	Lockwasher	
8	02916	Cap Screw	
9	37733*	Timer Case	Nonmetered Models
	38145*	Security Case	Card Reader Models
	38724*	Meter Case	Metered Models
10	35889	Pressure Switch	
11	39167*P	Cabinet Top	Metered Models
	39185*	Cabinet Top	Nonmetered Models
12	23962	Screw	
13	501086	Screw	
14	02431	Lockwasher	
15	52566	Locknut	
16	32648	Bumper	
17	39096	Control Panel Overlay	
18	500226	Screw	Phillips Head
	35528	Screw	Torx Head

* Add Letter To Designate Color. L – Almond W – White

Cabinet Top and Loading Door



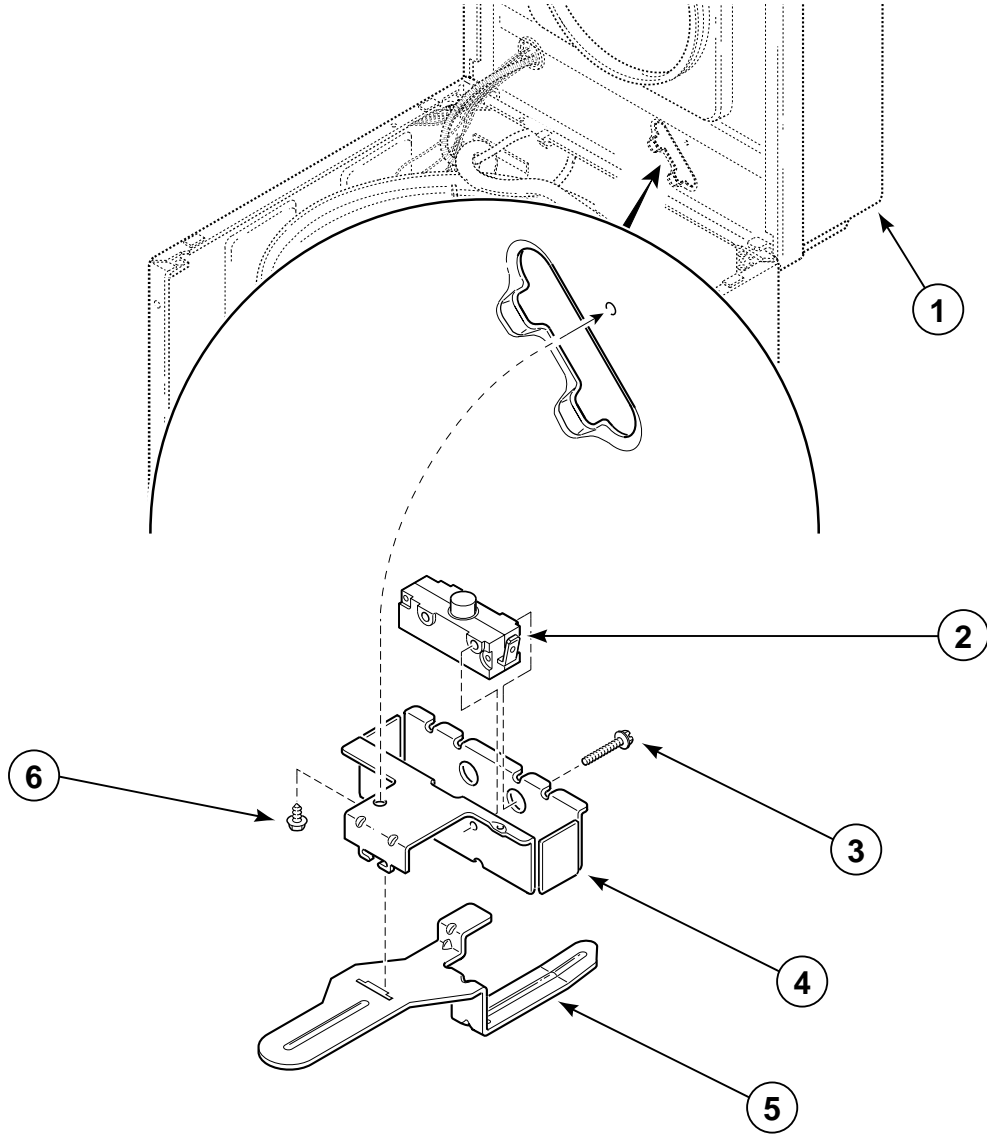
W348PZ3A

Cabinet Top and Loading Door

REF	PART #	DESCRIPTION	COMMENTS
1	39233*P	Loading Door	Models HWT020*A, HWT020*C, HWT110*A, HWT110*C, HWT120*A, HWT120*C, JWT110*A and UWT021*A
	39231*P	Loading Door	All Other Models
2	34153	Plug	
3	34337	Screw	
4	503673	Screw	Optional, For Added Security
5	34338	Gasket	
6	52909	Screw	
7	24903	Warning Sticker	
8	38384	Strain Relief	
9	39185*	Cabinet Top	Porcelain, Models HWT020*A, HWT020*C, SWT020*A, SWT021*A, SWT620*A, SWT620*C, SWT620*D, SWT621*C, SWT621*D, SWT720*A, SWT721*A and UWT021*A
	39167*	Cabinet Top	All Other Models
10	27222	Retainer Nut	Optional, For Added Security
11	23008	Screw And Lockwasher	
12	34475*P	Cabinet Kit	
13	56534	Support Barrel	
14	36020	Speed Nut	
15	33446	Bushing	
16	36437	Hinge	Right
17	36438	Hinge	Left
18	21685	Bumper	

* Add Letter To Designate Color. L – Almond W – White

Loading Door Switch



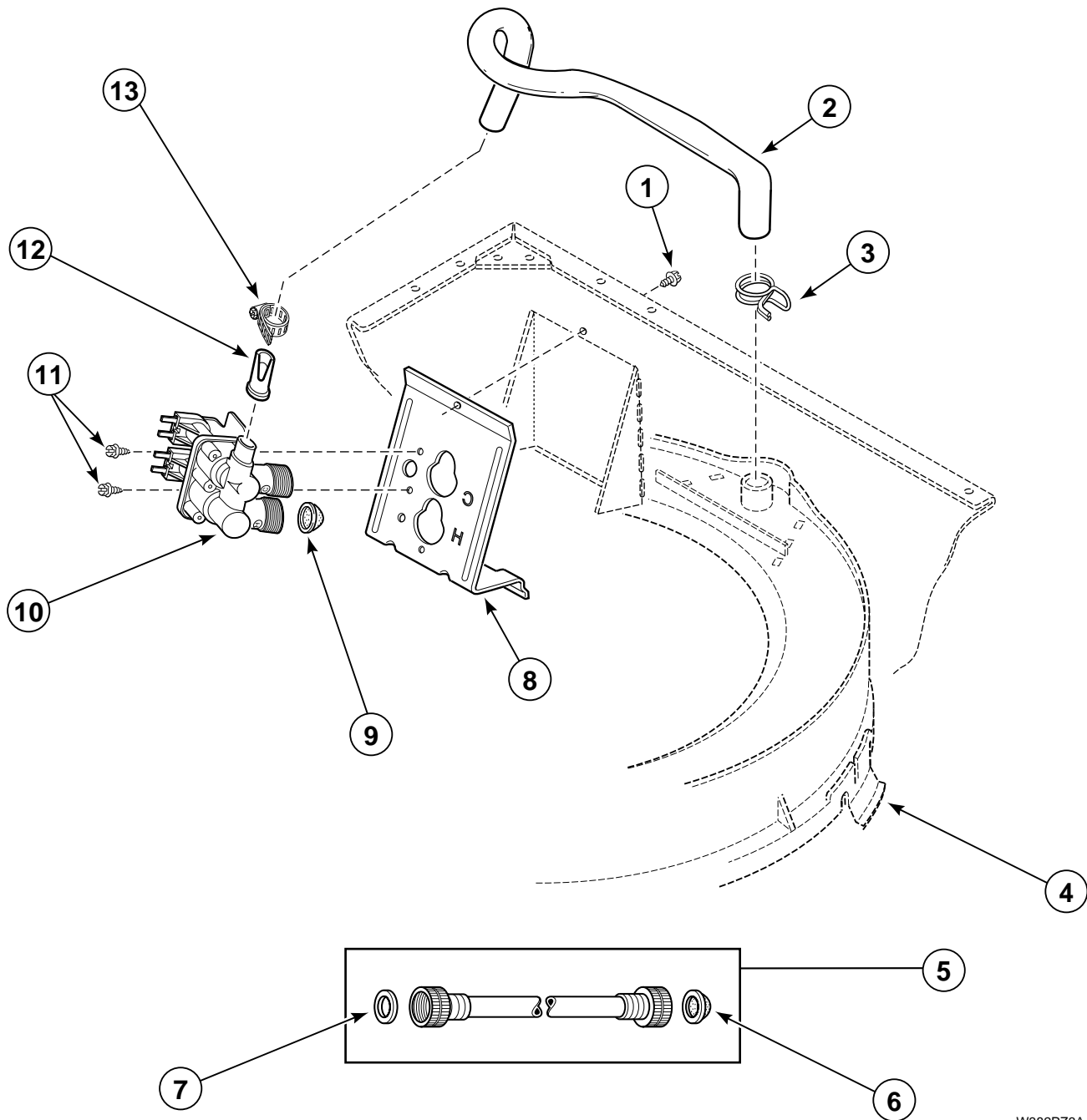
W349PZ3A

Loading Door Switch

REF	PART #	DESCRIPTION	COMMENTS
1	38724*	Meter Case	
2	33445	Switch	
3	36510	Screw	
4	37629	Switch Holder	
5	37630	Lever	
6	23962	Screw	

* Add Letter To Designate Color. L – Almond W – White

Inlet Hose, Fill Hose, Mixing Valve and Mounting Bracket

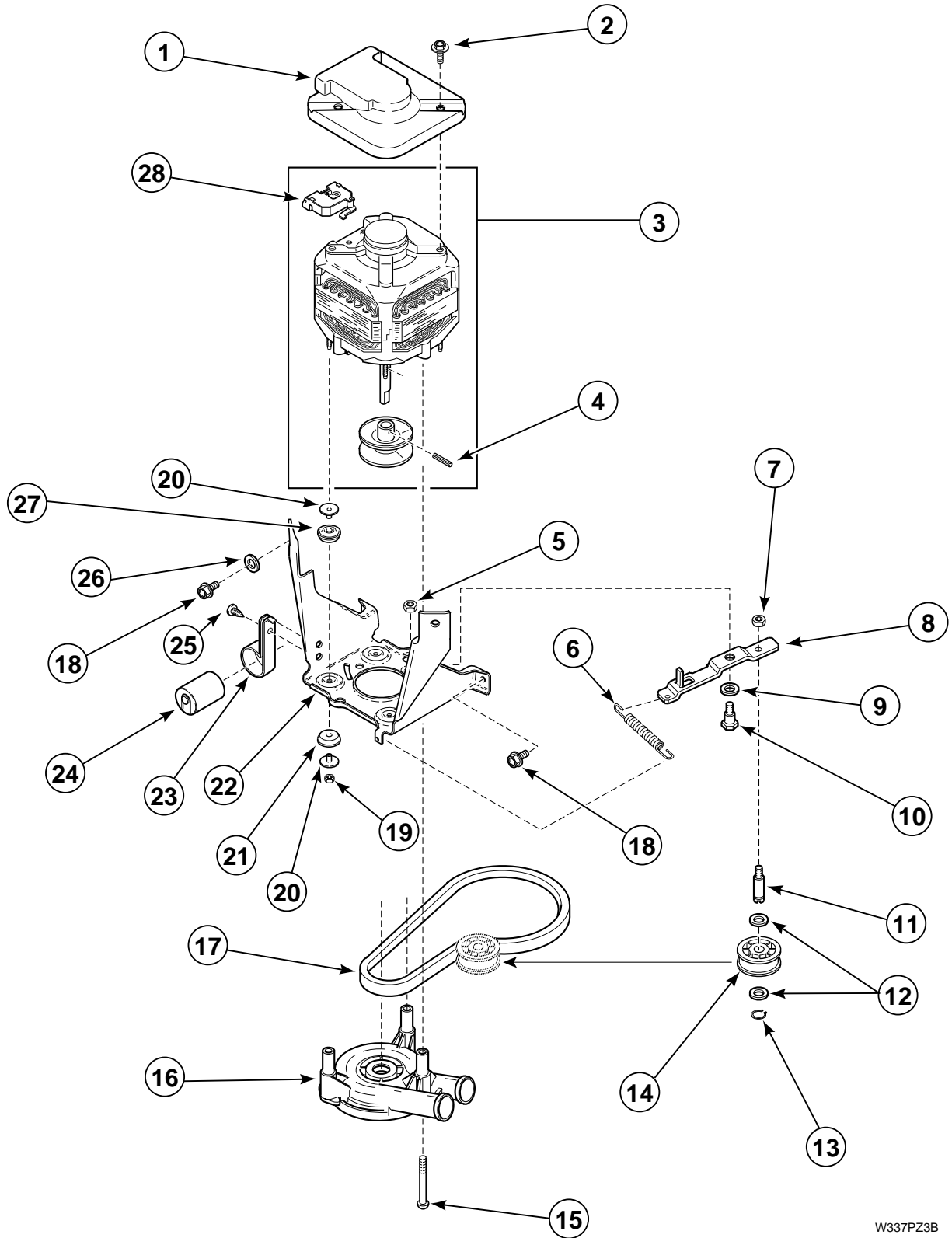


W382PZ3A

Inlet Hose, Fill Hose, Mixing Valve and Mounting Bracket

REF	PART #	DESCRIPTION	COMMENTS
1	33562	Screw	
2	38155	Filler Hose	
3	29210	Hose Clamp	
4	38573	Outer Tub Cover	
5	28330P	Inlet Hose Assembly	Four Foot (Includes items 6 and 7)
	20617	Inlet Hose Assembly	Eight Foot (Optional)
	20618	Inlet Hose Assembly	Ten Foot (Optional)
6	28605	Filter Washer	
7	20290	Rubber Washer	
8	39407	Mixing Valve Mounting Bracket	
9	F270200	Inlet Screen	
10	38495	Mixing Valve	
11	501086	Screw	
12	34500	Backflow Preventer	
13	36801	Hose Clamp	

Motor, Mounting Bracket, Belt and Idler Assembly

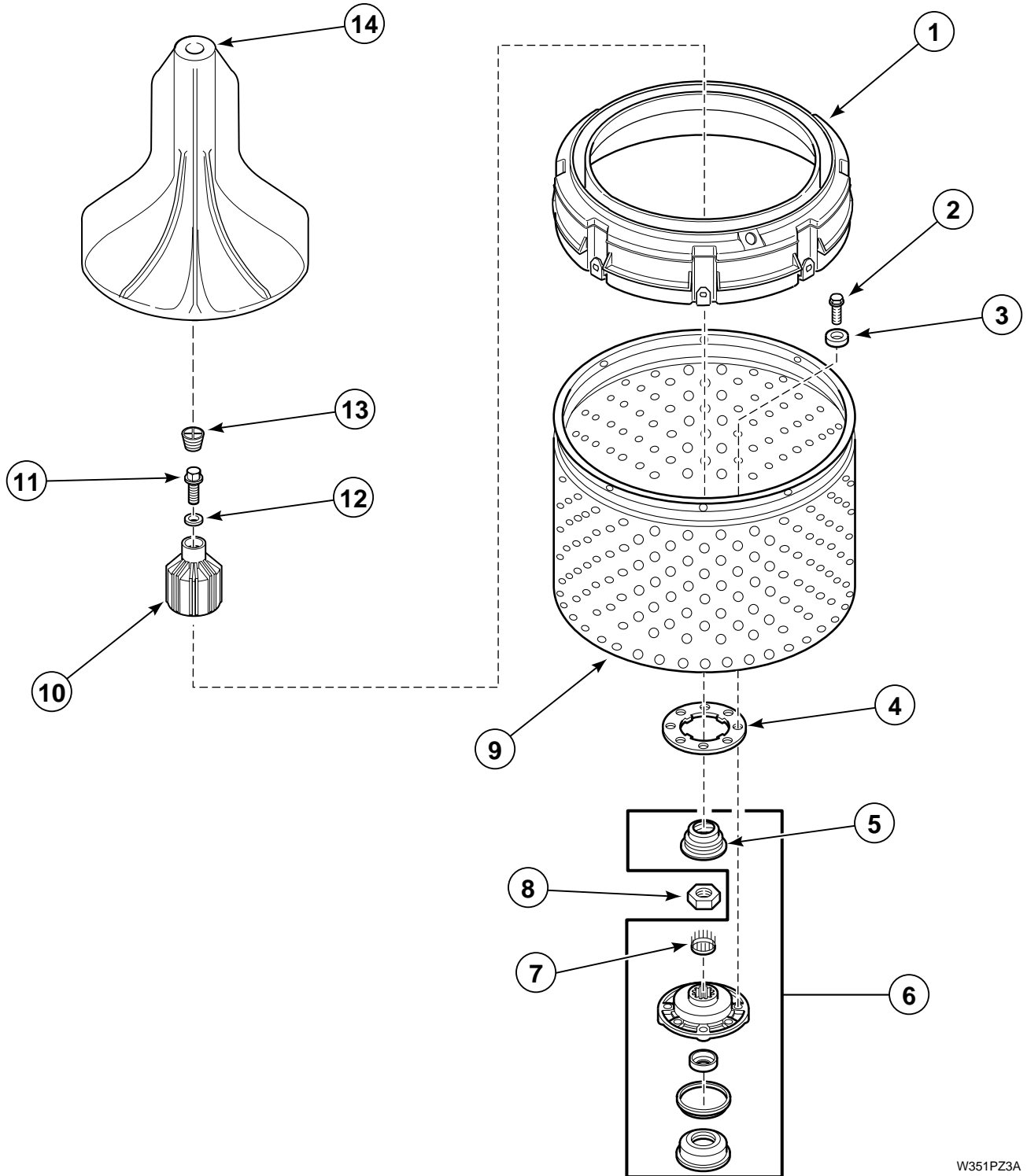


W337PZ3B

Motor, Mounting Bracket, Belt and Idler Assembly

REF	PART #	DESCRIPTION	COMMENTS
1	34754	Motor Shield	
2	36639	Screw	
3	38035	Motor	One Speed - Models HWT110*A, HWT110*C, SWT110*A, SWT111*A and SWT210*A
	38036	Motor	Model JWT110*A
	38034	Motor	Two Speed, All Other Models
4	10416	Roll Pin	
5	52566	Locknut	
6	39666	Idler Lever Spring	
7	28803	Locknut	
8	38011	Idler Lever	
9	81392	Washer	
10	27229	Shoulder Bolt	
11	56461	Idler Shaft	
12	52549	Washer	Nylatron
13	23748	Retainer Ring	
14	38225	Idler Pulley	
15	34565	Screw	
16	36863P	Pump Assembly	
17	37820	Belt	Agitate and Spin
18	35369	Screw	
19	35423	Nut	
20	38325	Motor Mount Post	
21	38396	Motor Mount	
22	37445	Motor Mount Bracket	
23	37535	Clamp	All Models Except JWT110*A
24	37377	Capacitor	All Models Except JWT110*A
25	52909	Screw	All Models Except JWT110*A
26	37772	Washer	
27	38395	Motor Mount	
28	35632	Motor Switch	

Agitator, Drive Bell, Seal Kit, Washtub and Hub



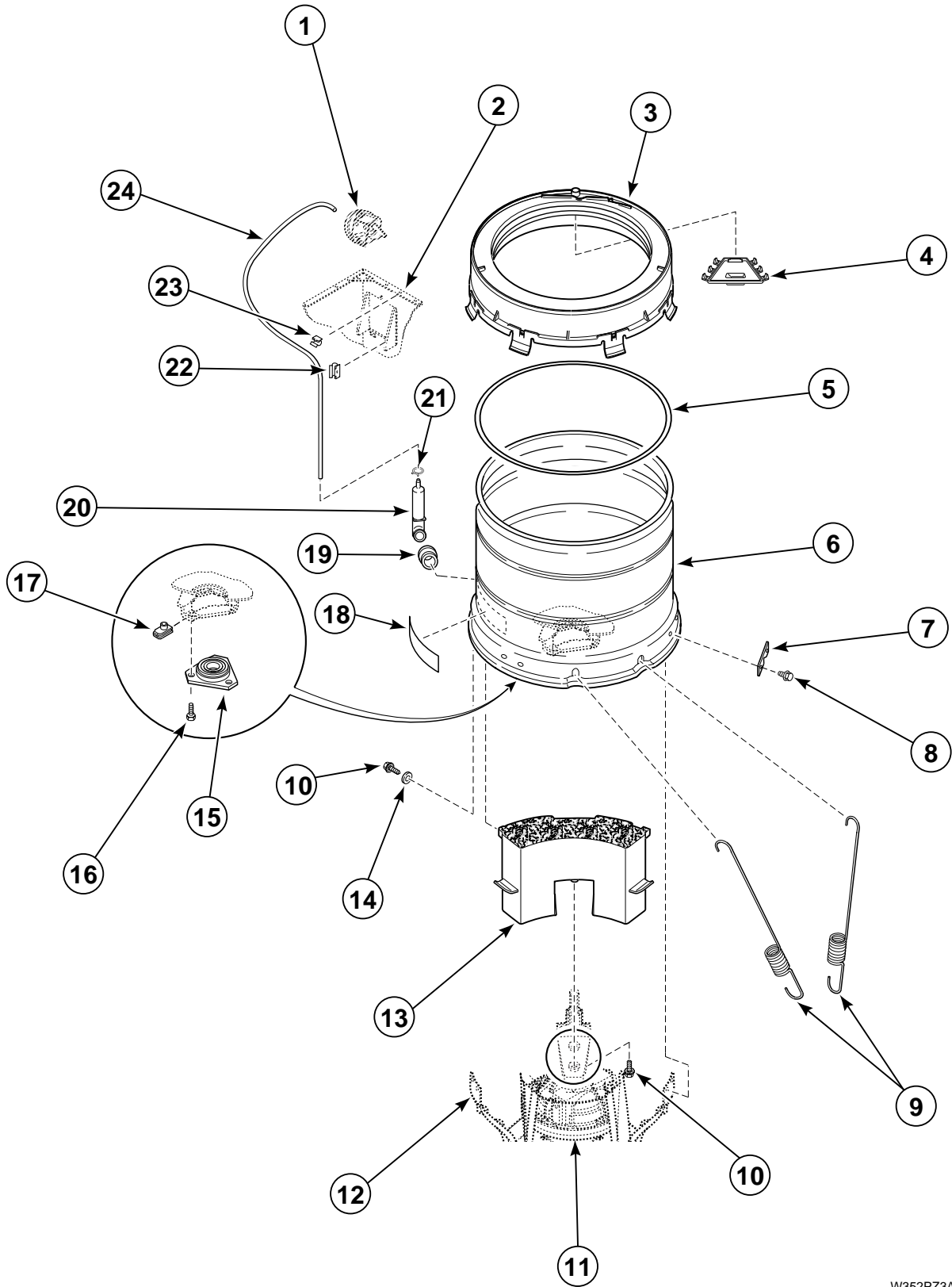
W351PZ3A

Agitator, Drive Bell, Seal Kit, Washtub and Hub

REF	PART #	DESCRIPTION	COMMENTS
	36765P	Grease	Use with 36425 Seal
1	38151	Balance Ring	Through Serial Number 9706046552 and Starting Again with Serial Number 9707006361
	38378	Balance Ring	Starting with Serial Number 9706046553 and Continuing through Serial Number 9707006360
2	27202	Cap Screw	
3	28094	Gasket	Use with Porcelain Washtub
4	39122	Gasket	
5	36425 †	Seal	
6	646P3	Hub And Seal Kit	Includes 38359 Cover Gasket and 39508P Drive Bell and Seal Kit
7	29728 †	Splined Insert	
8	29220	Locknut	
9	38668P	Washtub	Blue Porcelain
	39388P	Washtub	Stainless Steel
10	39508P †	Drive Bell And Seal Kit	Replaces 36443P — Includes 29728, 36425, 36511 and 39432
11	34288 †	Shoulder Screw	Use with 36443 Drive Bell and Seal Kit
	39432 †	Shoulder Screw	Use with 39508P Drive Bell and Seal Kit
12	36472 †	O Ring	Use with 34288 Shoulder Screw
13	36511 †	Plug	
14	33513	Agitator	

NOTE: Drive Bell and Seal Kit (Includes parts marked with a dagger †).

Outer Tub, Cover, Pressure Hose and Counterweight



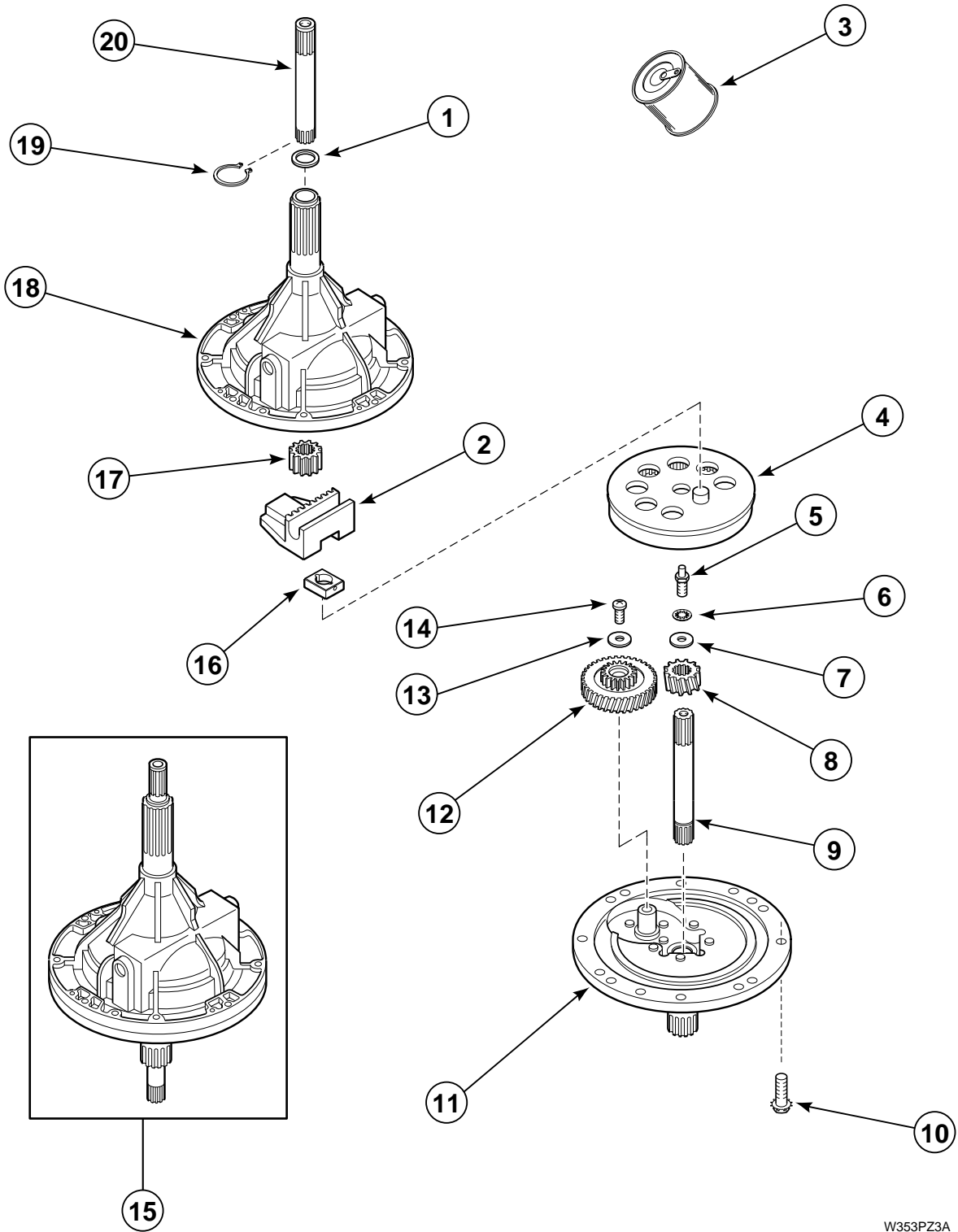
W352PZ3A

Outer Tub, Cover, Pressure Hose and Counterweight

REF	PART #	DESCRIPTION	COMMENTS
1	35889	Pressure Switch	
2	34475*P	Cabinet Kit	
3	38573	Tub Cover	Includes Items 4 and 5 — Through Serial Number 9706046552 and Starting Again with Serial Number 9707006361
	37502	Tub Cover	Includes Items 4 and 5 — Starting with Serial Number 9706046553 and Continuing Through Serial Number 9707006360
4	38154	Water Inlet Channel	
5	38359	Gasket	
6	37981P	Outer Tub	
7	27926	Leg Plate	
8	35369	Screw	
9	37576	Module Spring	
10	39566	Screw	
11	38826P	Transmission Assembly	
12	39254	Weldment And Bearing Assembly	
13	38769	Counterweight	
14	39249	Washer	
15	27182	Bearing Housing Assembly	
16	36991	Screw	
17	27222	Retainer Nut	
18	500049	Sticker	
19	29175	Grommet	
20	30907	Pressure Bulb	
21	39282	Hose Clamp	
22	36985	Clip	
23	21036	Clip	
24	39124	Pressure Hose	Models HWT020*A, HWT020*C, HWT110*A, HWT110*C, HWT120*A, HWT120*C, JWT110*A, SWT020*A, SWT021*A, SWT110*A, SWT111*A, SWT120*A, SWT121*A, SWT210*A, SWT220*A, SWT221*A, SWT320*A, SWT321*A and UWT021*A
	39125	Pressure Hose	All Other Models

* Add Letter To Designate Color. L – Almond W – White

38826P Transmission Assembly



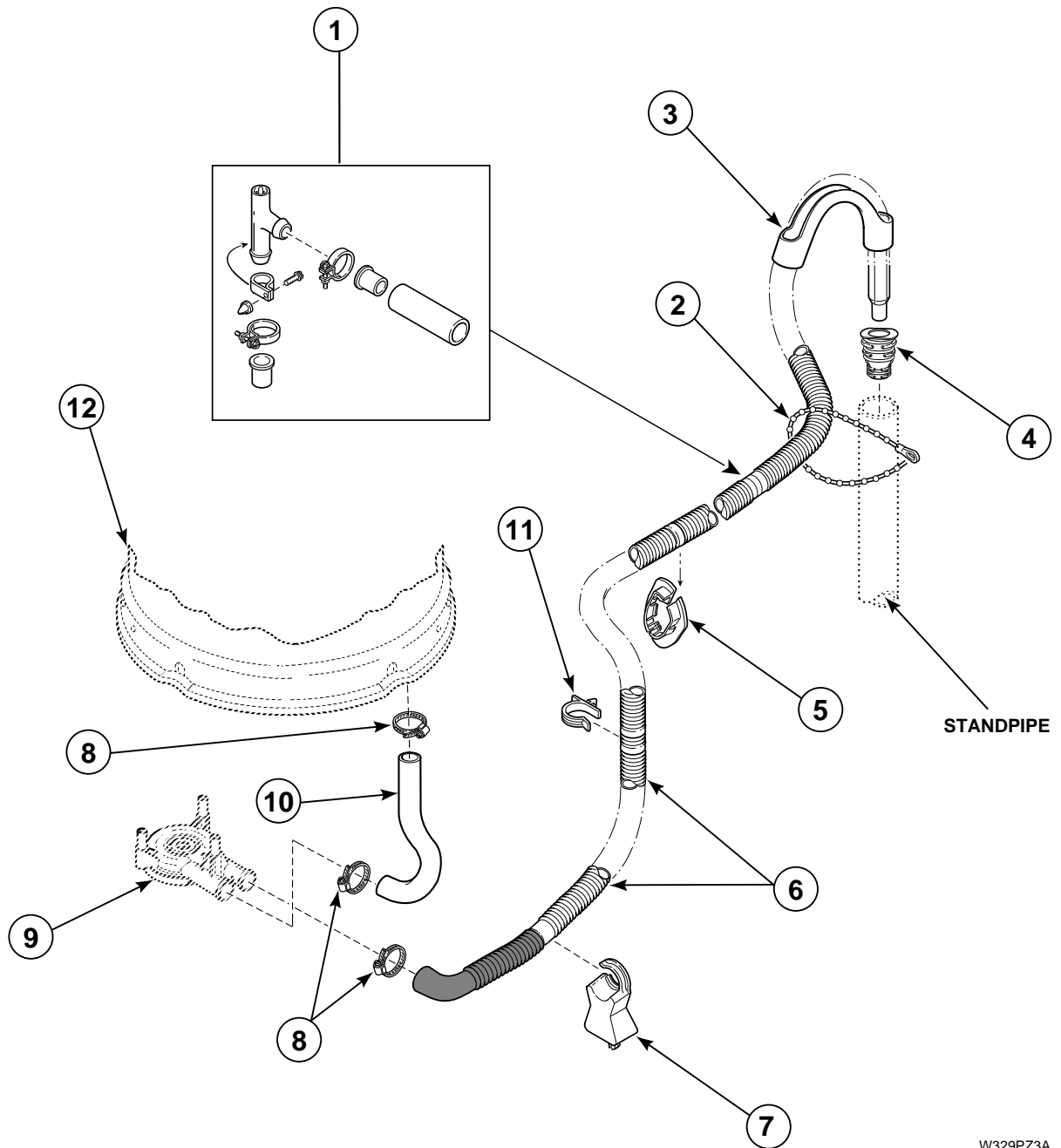
W353PZ3A

38826P Transmission Assembly

REF	PART #	DESCRIPTION	COMMENTS
	27604P	Never-Seeze Compound	Apply to the Smooth Area of Both the Upper and Lower Transmission Tubes
	37577P	Sealant	Use Between Transmission Case and Cover
1	35092	Washer	
2	31526	Rack	
3	27243P	Transmission Oil	One Fill
4	26577	Internal Gear	
5	27030	Special Screw	
6	21456	Lockwasher	
7	26509	Washer	
8	37406	Drive Pinion	
9	38268	Input Shaft	
10	32814	Screw	
11	37471	Transmission Cover	
12	37403	Reduction Gear	
13	29260	Washer	
14	29273	Screw	
15	38826P	Transmission Assembly	
16	26493	Slide	
17	27003	Agitator Pinion	
18	33223	Transmission Case	
19	27197	Retainer Ring	
20	36570	Output Shaft	

Drain Hose and Siphon Break

(Model JWT110*A)



W329PZ3A

* Add Letter To Designate Color. L – Almond W – White

Drain Hose and Siphon Break

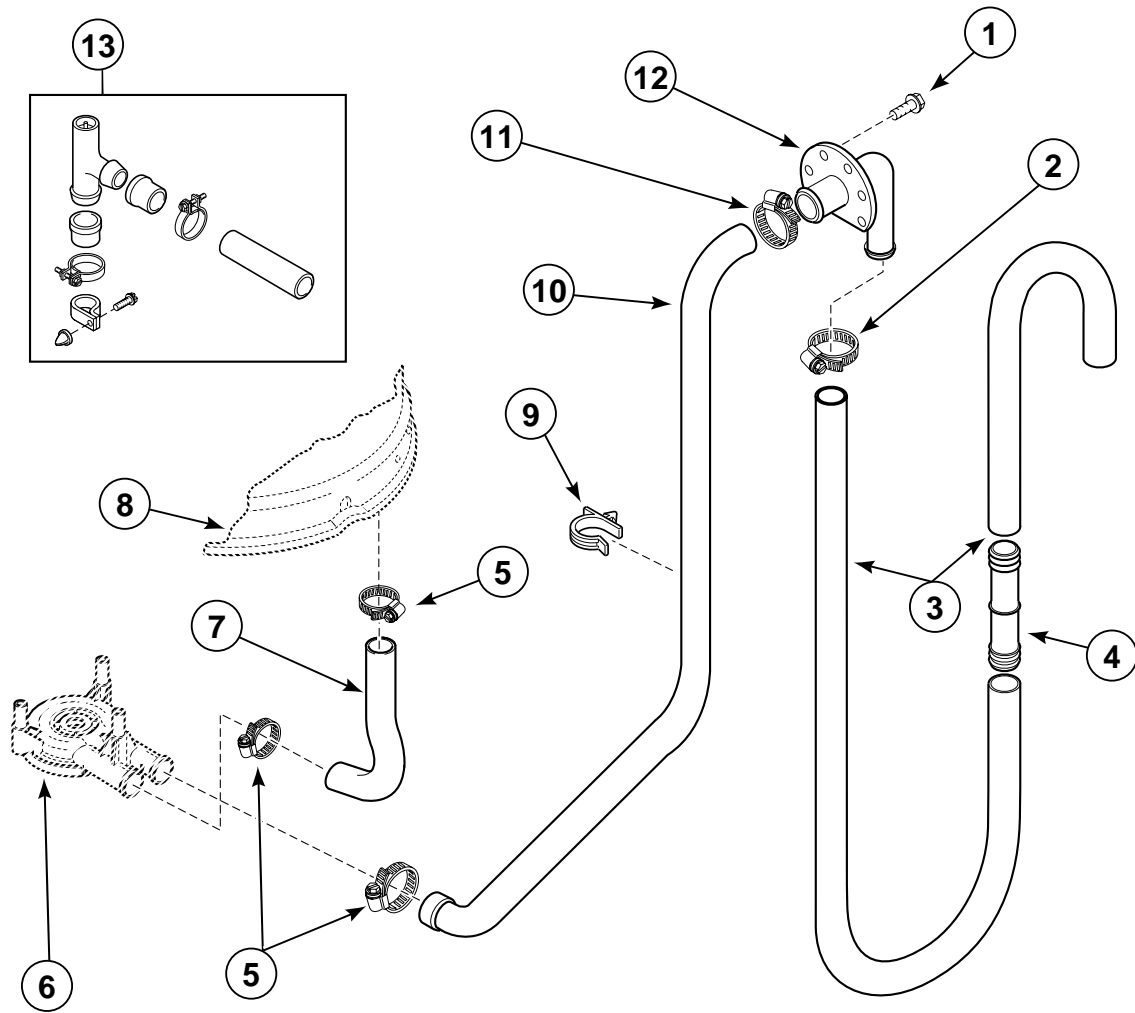
(Model JWT110*A)

REF	PART #	DESCRIPTION	COMMENTS
1	562P3	Siphon Break Kit	Siphon Break Kit Must Be Installed In Drain Hose If Drain Receptacle Is Lower Than Cabinet Top Of Washer
2	33489	Beaded Tie-down Strap	
3	33615	Drain Hose Sleeve	
4	36878	Standpipe Adapter	
5	32219	Drain Hose Strain Relief	
6	38062	Drain Hose	
7	38732	Hose Support	
8	36802	Hose Clamp	
9	36863P	Pump Assembly	
10	38351	Tub-to-Pump Hose	
11	36014	Hose Retainer Clip	
12	37981P	Outer Tub	

* Add Letter To Designate Color. L – Almond W – White

Pump Assembly, Bracket, Hoses and Siphon Break Kit

(All Models Except JWT110*A)



W354PZ3B

* Add Letter To Designate Color. L – Almond W – White

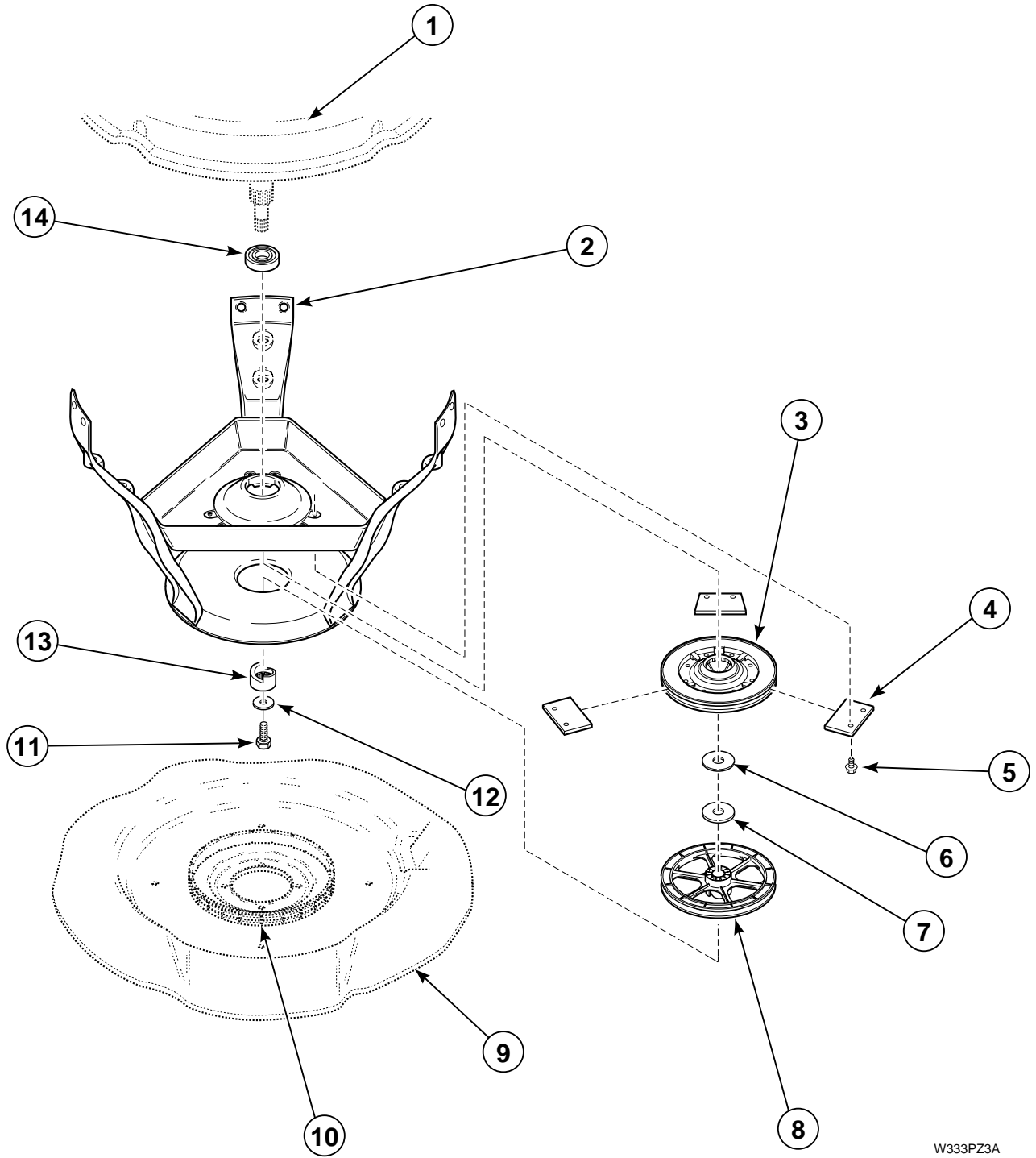
Pump Assembly, Bracket, Hoses and Siphon Break Kit

(All Models Except JWT110*A)

REF	PART #	DESCRIPTION	COMMENTS
1	52909	Screw	
2	20211	Hose Clamp	
3	28293	Drain Hose	
4	25863	Hose Coupler	If Drain Hose Must Be Shortened, Cut Hose Between Molded End and Molded Elbow. Use One No. 25863 Hose Coupler to Splice Hose
5	36802	Hose Clamp	
6	36863P	Pump Assembly	
7	38351	Tub-to-Pump Hose	
8	37981P	Outer Tub	
9	39177	Hose Retainer Clip	
10	38273	Pump-to-Elbow Hose	
11	20391	Hose Clamp	
12	36990	Drain Hose Elbow	
13	562P3	Siphon Break Kit	Siphon Break Kit Must Be Installed In Drain Hose If Drain Receptacle Is Lower Than Cabinet Top Of Washer

* Add Letter To Designate Color. L – Almond W – White

Weldment and Bearing Assembly, Brake and Pulley

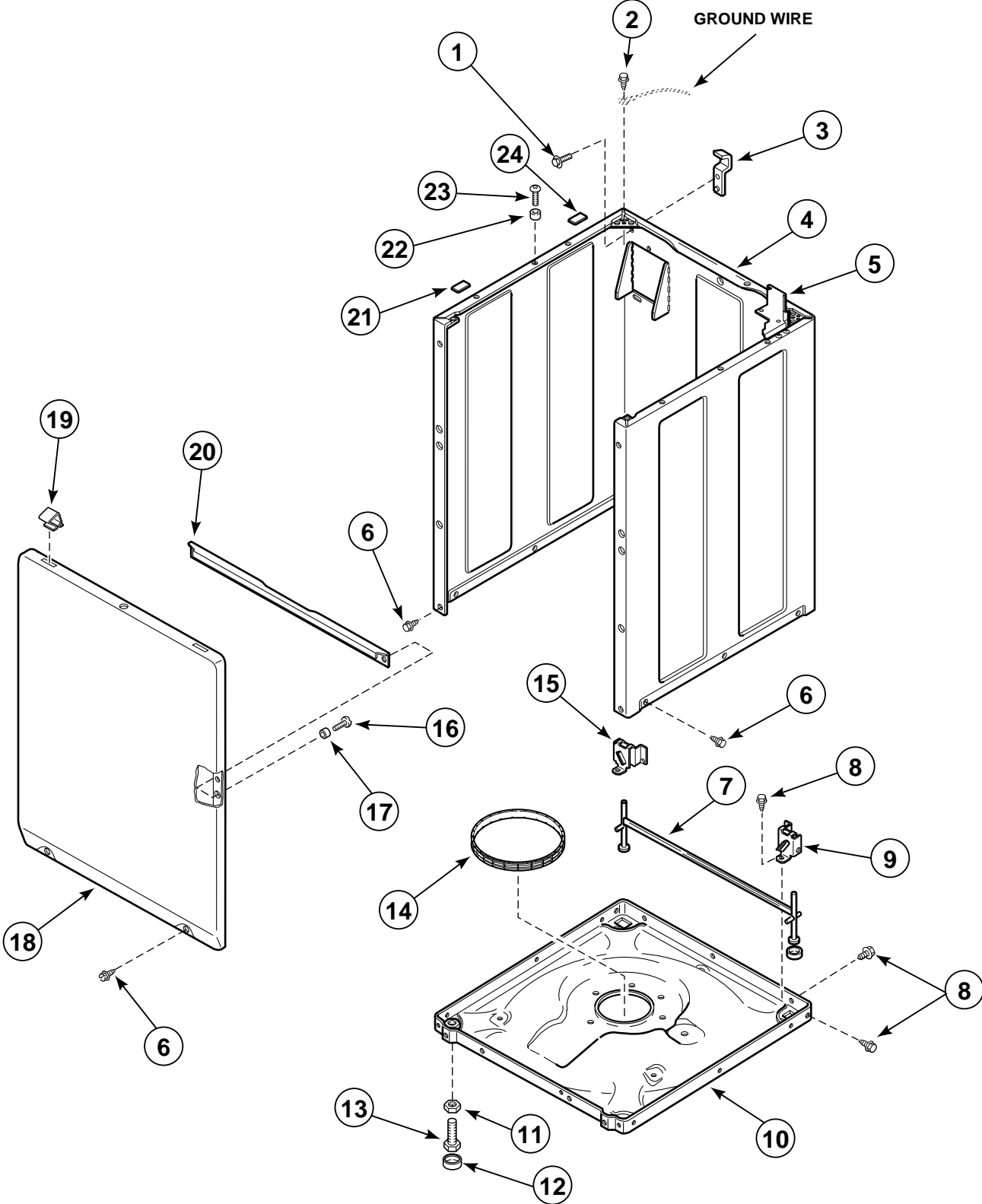


W333PZ3A

Weldment and Bearing Assembly, Brake and Pulley

REF	PART #	DESCRIPTION	COMMENTS
1	37981P	Outer Tub	
2	39254	Weldment and Bearing Assembly	
3	38505P	Brake	
4	637P3	Brake Pad Kit	Includes Three Pads
5	37836	Screw	
6	35535	Washer	Thin
7	27015	Washer	Thick
8	38223	Pulley Assembly	
9	39165	Base	
10	37937	Friction Ring	
11	27220	Screw	
12	26509	Washer	
13	38008	Helix	
14	28944R	Bearing	

Front Panel, Base Assembly and Cabinet Kit



W355PZ3A

Front Panel, Base Assembly and Cabinet Kit

REF	PART #	DESCRIPTION	COMMENTS
1	51780	Screw	
2	52909	Screw	
3	27103	Hinge	
4	34475*P	Cabinet Kit	
5	35867	Mounting Bracket	
6	27196	Screw	Slotted Hex Head
	35527	Screw	Torx Head
7	34443	Leveling Leg and Stabilizer Bar	
8	35148	Screw	
9	36036	Bracket	Right
10	39165	Base Assembly	
11	21899	Locknut	
12	34318	Rubber Foot	
13	34319	Leveling Leg	
14	37937	Friction Ring	
15	36037	Bracket	Left
16	39559	Screw	
17	28102	Panel Locator	
18	34656*P	Front Panel	Includes 35865 Hold-Down Clip, 35097 Brace & Attaching Hardware
19	35865	Hold-down Clip	
20	35097	Brace	
21	56128	Bumper Pad	
22	56079	Panel Locator	
23	32671	Screw	
24	36226	Bumper Pad	

* Add Letter To Designate Color. L – Almond W – White

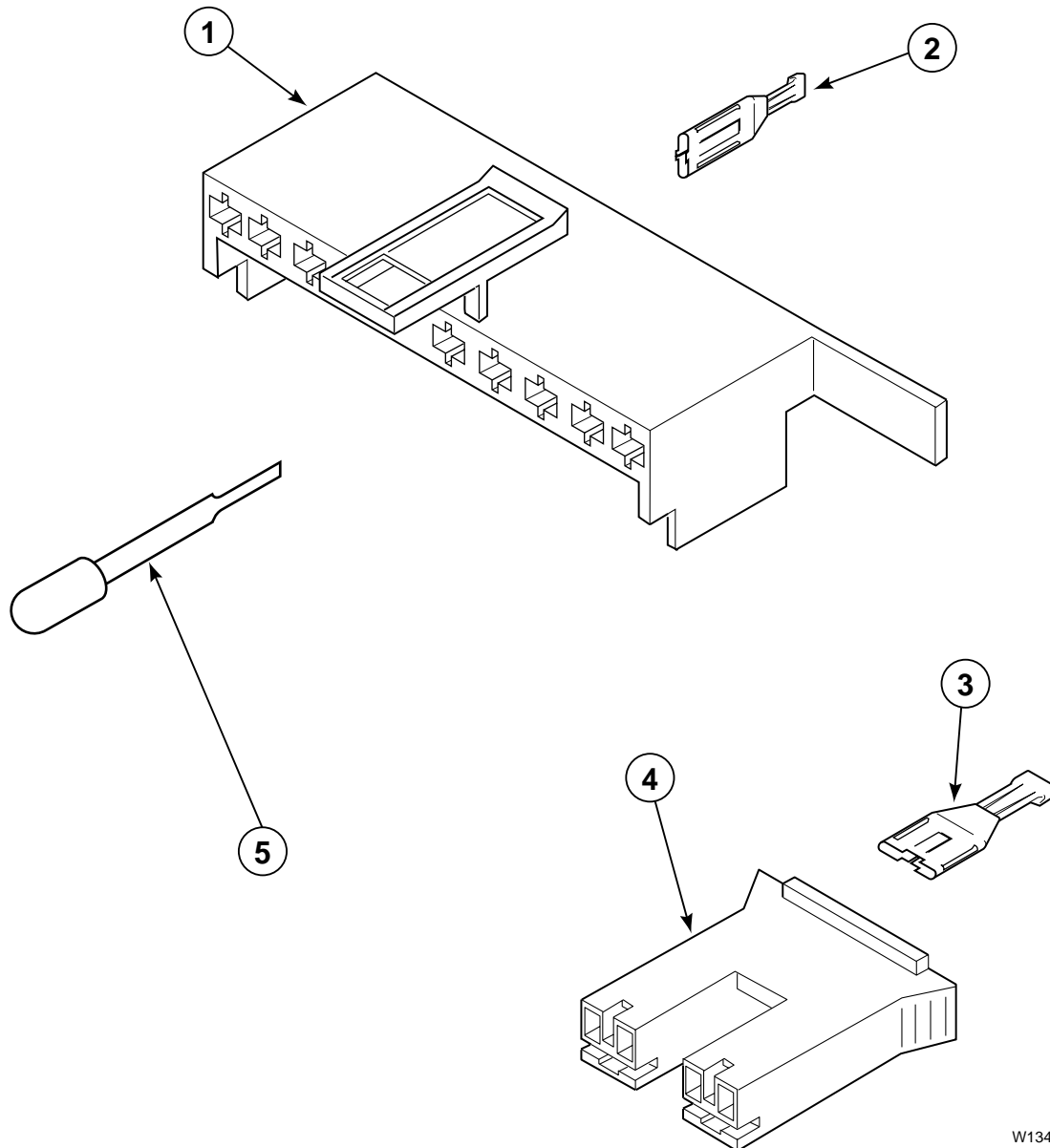
Order individual wire color and gauge by part number listed below. Order wire by foot and terminals and connectors are required. It is recommended when applying terminals to wires that terminals be soldered to wires.

IMPORTANT: Always replace wires with proper gauge.

Wires

PART NUMBER	WIRE GAUGE	WIRE COLOR
45001	18 Gauge Wire	Black
45380	12 Gauge Wire	Orange

Mixing Valve and Motor Disconnect Blocks, Terminals and Terminal Extractor Tool

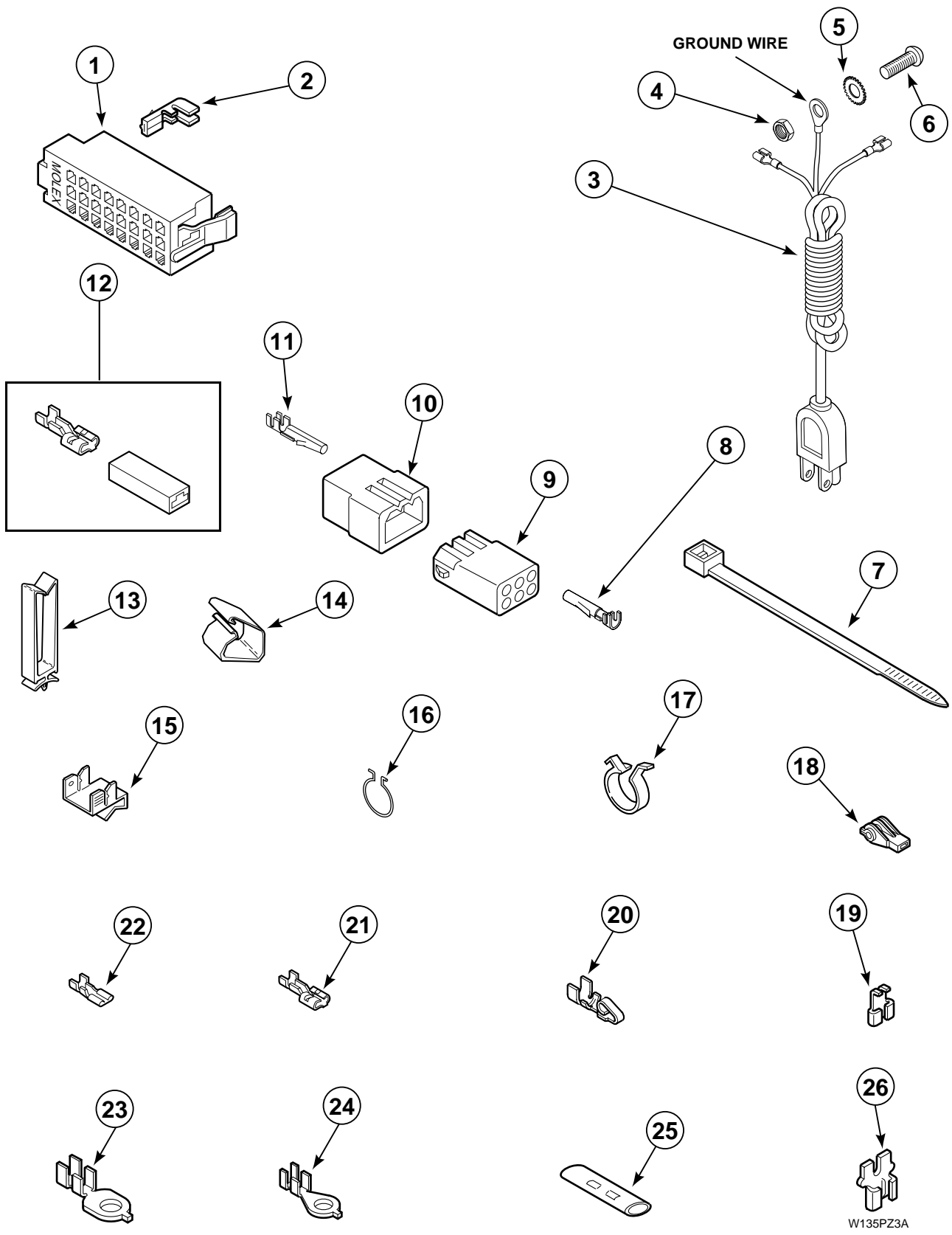


W134PZ3A

Mixing Valve and Motor Disconnect Blocks, Terminals and Terminal Extractor Tool

REF	PART #	DESCRIPTION	COMMENTS
1	34677	Molex Housing	Motor
2	00188	Molex Terminal	For One Or Two Wire Application
3	00121	Spade Terminal	1/4 Inch
4	34675	Amp Housing	Mixing Valve - Natural
	34676	Amp Housing	Mixing Valve - Red
5	283P4	Terminal Extractor Tool	

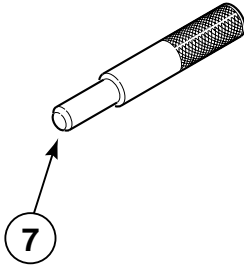
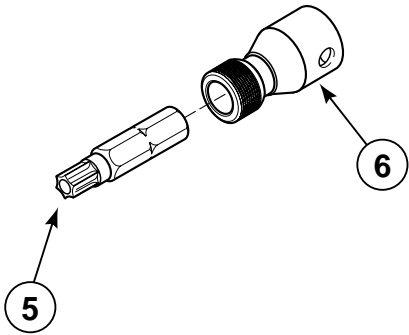
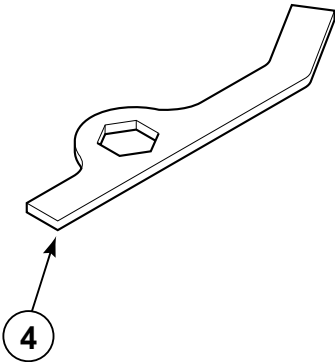
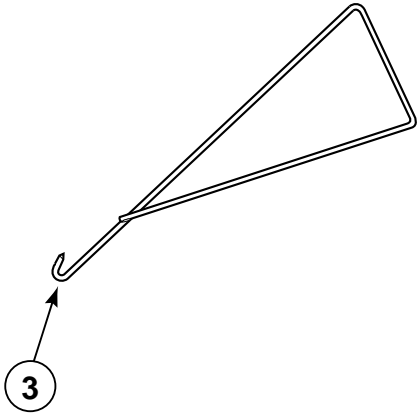
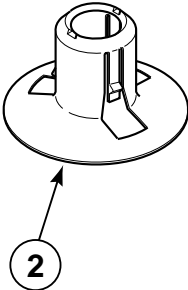
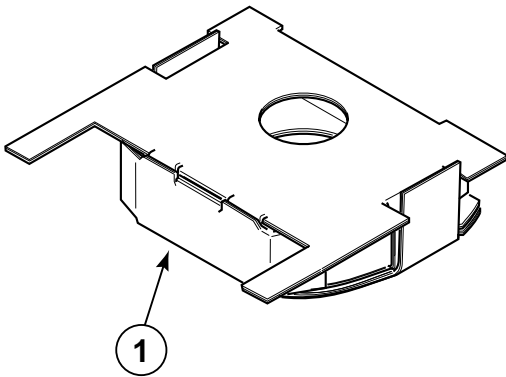
Power Cord and Terminals



Power Cord and Terminals

REF	PART #	DESCRIPTION	COMMENTS
1	32746	Molex Housing	Right Hand (Black)
	34123	Molex Housing	Left Hand (White)
2	00188	Molex Terminal	Used For One Or Two Wire Application
3	39405	Power Cord	Models SWT420*A, SWT420*D, SWT421*A, SWT421*D, SWT520*A, SW521*A, SWT620*A, SWT620*C, SWT620*D, SWT621*C, SWT621*D, SWT720*A and SWT721*A
	39404	Power Cord	All Other Models
4	03673	Nut	
5	21735	Lockwasher	
6	20267	Screw	
7	55881	Wire Tie	
8	00117	Terminal	Female
9	26301	Terminal Block	One Circuit
	26708	Terminal Block	Six Circuit
	26163	Terminal Block	Nine Circuit
10	26302	Terminal Block	One Circuit
	23041	Terminal Block	Six Circuit
	23033	Terminal Block	Nine Circuit
11	00116	Terminal	Male
12	00234	Terminal And Housing Assembly	
13	36274	Harness Clip	
14	35521	Harness Clip	
15	00161	Ground Clip	
16	51291	Wire Clip	
17	504034	Wire Clip	
18	70210	Plastic Insulator	
19	00120	Right Angle	Flag Terminal
20	00220	Spade Terminal	Female - 1/4 Inch
21	00119	Spade Terminal	Large Spade
22	00112	Spade Terminal	Small Spade
23	00113	Eyelet Terminal	1/4 Inch Ring
24	00110	Eyelet Terminal	Small Shank
25	21091	Connector	
26	29673	Double Connector	

Special Tools

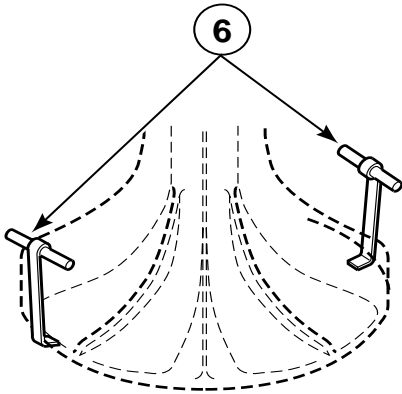
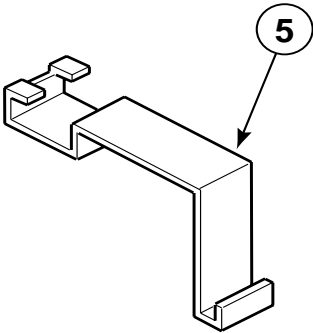
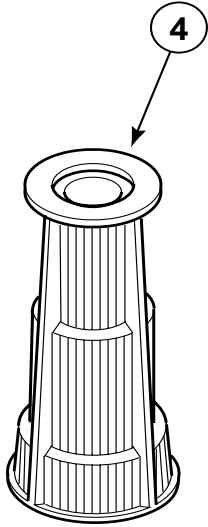
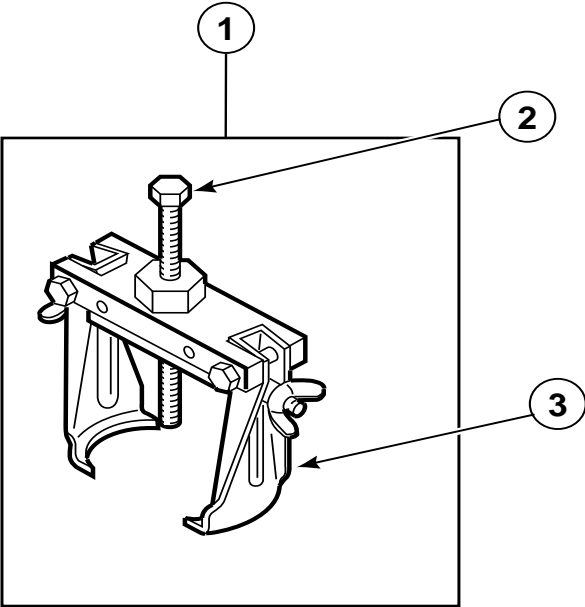


W340PZ3B

Special Tools

REF	PART #	DESCRIPTION	COMMENTS
1	39366	Washer Shipping Brace	Install Whenever Moving Washer - Remove Before Use
2	38149	Shipping Plug	Install Whenever Moving Washer - Remove Before Use
3	289P4	Spring Hook	For Removal Of Centering Springs From Outer Tub
4	306P4	Hex Wrench	For Removal Of Locknut From Washtub Hub
5	281P4	T15 Tamper Resistant Bit	For Removal And Installation Of Control Hood Security Screws
	282P4	T25 Tamper Resistant Bit	For Removal And Installation Of Front Panel Security Screws
6	24161	Torx Bit Holder	3/8 Inch Drive
7	305P4	Transmission Pin Tool	Use Pin Tools In Place Of Dowel Pins When Reassembling Transmission Cover And Case - Two Required

Special Tools



W310PZ3C

Special Tools

REF	PART #	DESCRIPTION	COMMENTS
1	294P4	Bell Tool	For Removal And Installation Of Drive Bell To Transmission Shaft
2	294P4B	Drive Bell Bolt	To Update 253P4 Bell Tool
3	294P4A	Drive Bell Arms	To Update 253P4 Bell Tool
4	293P4	Seal Tool	For Installation Of 36425 Seal
5	273P4	Gasket Tool	Use To Install 38359 Gasket In Outer Tub Cover
6	254P4P	Agitator Hooks	Use To Remove Agitator From Drive Bell, Set Of Two

Wire Harnesses

Individual wires not serviced separately. Order complete harnesses listed below, or order wire by the foot.
See Page 42.

WASHER MODEL	BASE HARNESS	TIMER HARNESS	HOOD HARNESS
HWT020*A HWT020*C SWT020*A SWT021*A UWT021*A	38661	34092	38870
HWT110*A HWT110*C SWT110*A SWT111*A	38661	29279	38868
JWT110*A	38772	29279	38868
HWT120*A HWT120*C SWT120*A SWT121*A	38661	29281	38867
SWT210*A	38661	29279	38868
SWT220*A SWT221*A	38661	29281	38867
SWT320*A SWT321*A	38661	34175	38867
SWT420*A SWT420*D SWT421*A SWT421*D	38661	38128	36093
SWT520*A SWT521*A	38661	38128	36093
SWT620*A SWT620*C SWT620*D SWT621*C SWT621*D	38661	38026 (Security Box)	36093
SWT720*A SWT721*A	38661	38191 (Card Reader)	36093

* Add Letter To Designate Color. L – Almond W – White

Parts Index

A

Agitator	
33513	31
Agitator Hooks	
254P4P	51
Agitator Pinion	
27003	35
Amp Housing	
34675	45
34676	45

B

Backflow Preventer	
34500	27
Balance Ring	
38151	31
38378	31
Base	
39165	41
Base Assembly	
39165	43
Base Harness	
38661	52
38772	52
Beaded Tie-down Strap	
33489	37
Bearing	
28944R	41
Bearing Housing Assembly	
27182	33
Bell Tool	
294P4	51
Belt	
37820	29
Bolt	
29651	9
Brace	
35097	43
Bracket	
30642	11, 13, 17
35525	11, 13
35525 †	9
36036	43
36037	43
Brake	
38505P	41
Brake Pad Kit	
637P3	41
Bumper	
21685	23
32648	19, 21
Bumper Pad	
36226	43
56128	43
Bushing	
33446	23

C

Cabinet Kit	
34475*P	9, 11, 13, 23, 33, 43
Cabinet Top	
39167*	23
39167*P	9, 11, 13, 19, 21
39185*	7, 15, 17, 19, 21, 23
Cap Screw	
02916	7, 15, 19, 21
27202	31
Capacitor	
37377	29
Card Reader	
39685	17
Carriage Bolt	
02505	7, 11, 13, 15, 17
02505 †	9
Clamp	
37535	29
Clip	
21036	33
36985	33
Clutch	
29503	9
Coin Drop Assembly	
38479	11, 13
Coin Funnel Kit	
523P3 †	9
Connector	
21091	47
Control and Shield	
38188P	21
Control Hood	
37075*	7, 15, 17, 19, 21
Control Hood Rear Cover	
38267	19
Control Hood Rear Panel	
38267	21
Control Knob Assembly	
35182	19
Control Panel Frame	
36097*	21
36521*	19
Control Panel Overlay	
38940	19
38941	19
38942	19
38944	19
38945	19
38949	19
39096	21
39503	19
39504	19
Counter Kit	
62113P	9
Counterweight	
38769	33

D

Double Connector	
29673	47
Drain Hose	
28293	39
38062	37
Drain Hose Elbow	
36990	39
Drain Hose Sleeve	
33615	37
Drain Hose Strain Relief	
32219	37
Drive Bell And Seal Kit	
39508P †	31
Drive Bell Arms	
294P4A	51
Drive Bell Bolt	
294P4B	51
Drive Pinion	
37406	35

E

18 Gauge Wire	
45001	44
Eyelet Terminal	
00110	47
00113	47

F

Filler Hose	
38155	27
Filter Washer	
28605	27
Friction Ring	
37937	41, 43
Front Overlay	
38717	11, 13
Front Panel	
34656*P	43

G

Gasket	
26354	11, 13
28094	31
34338	23
35526	11, 13
35526 †	9
37526	17
38359	33
39122	31
Gasket Tool	
273P4	51
Grease	
36765P	31
Grommet	
29175	33

Ground Clip	
00161	47

H

Harness Clip	
35521	47
36274	47
Helix	
38008	41
Hex Wrench	
306P4	49
Hinge	
27103	43
36437	23
36438	23
Hold-down Clip	
35865	43
Hood Harness	
36093	52
38867	52
38868	52
38870	52
Hose Clamp	
20211	39
20391	39
29210	27
36801	27
36802	37, 39
39282	33
Hose Coupler	
25863	39
Hose Retainer Clip	
36014	37
39177	39
Hose Support	
38732	37
Hub And Seal Kit	
646P3	31

I

Idler Lever	
38011	29
Idler Lever Spring	
39666	29
Idler Pulley	
38225	29
Idler Shaft	
56461	29
Indicator Light	
32464	19
32466	19
Inlet Hose Assembly	
20617	27
20618	27
28330P	27
Inlet Screen	
F270200	27
Input Shaft	
38268	35
Instruction Overlay	
38192	17

Internal Gear 26577	35
------------------------------	----

K

Knurled Nut 24205	19
----------------------------	----

L

Leg Plate 27926	33
Leveling Leg 34319	43
Leveling Leg and Stabilizer Bar 34443	43
Lever 37630	25
Loading Door 39231*P	23
39233*P	23
Locking Bracket 30642	9
Locknut 21899	43
28803	29
29220	31
29786	11, 13, 15, 17
29786 †	9
52566	17, 19, 21, 29
Lockwasher 02431	7, 15, 17, 19, 21
21456	35
21734	7, 15
21735	47
91093	7, 15, 17, 19, 21
91176	19

M

Meter Case 38724*	11, 13, 19, 21, 25
524P3*	9, 19
Meter Case Gasket 26354 †	9
Mixing Valve 38495	27
Mixing Valve Mounting Bracket 39407	27
Module Spring 37576	33
Molex Housing 32746	47
34123	47
34677	45
Molex Terminal 00188	45, 47
Motor 38034	29
38035	29
38036	29

Motor Mount 38395	29
38396	29
Motor Mount Bracket 37445	29
Motor Mount Post 38325	29
Motor Shield 34754	29
Motor Switch 35632	29
Mounting Bracket 35867	43

N

Never-Seeze Compound 27604P	35
Nut 03673	47
29786	7
29796	9
35423	29
52566	7, 15

O

O Ring 36472 †	31
Outer Tub 37981P	33, 37, 39, 41
Outer Tub Cover 38573	27
Output Shaft 36570	35

P

Panel Locator 28102	43
56079	43
Plastic Insulator 70210	47
Plug 34153	23
36511 †	31
Power Cord 39404	47
39405	47
Pressure Bulb 30907	33
Pressure Hose 39124	33
39125	33
Pressure Switch 35889	19, 21, 33
Pulley Assembly 38223	41
Pump Assembly 36863P	29, 37, 39

Pump-to-Elbow Hose	
38273	39
Push-to-Start Sticker	
53738	7

R

Rack	
31526	35
Reduction Gear	
37403	35
Retainer Nut	
27222	23, 33
30647	9, 11, 13, 17
Retainer Ring	
23748	29
27197	35
Right Angle	
00120	47
Roll Pin	
10416	29
Rubber Foot	
34318	43
Rubber Washer	
20290	27

S

Screw	
02916	17
20267	47
20268	7
21720	9
23222	19, 21
23962	7, 17, 19, 21, 25
27196	43
27220	41
27328	7
29273	35
32671	43
32814	35
33562	27
34337	23
34565	29
35148	43
35369	29, 33
35527	43
35528	19, 21
36048	9, 11, 13
36510	25
36639	29
36991	33
37836	41
39559	43
39566	33
500226	19, 21
501086	19, 21, 27
501524	21
503673	9, 11, 13, 17, 23
51778	7, 15
51780	43
52909	17, 23, 29, 39, 43
Screw And Lockwasher	
23008	23

Seal	
36425 †	31
Seal Tool	
293P4	51
Sealant	
37577P	35
Security Case	
38145*	17, 21
Service Door	
35798*	9, 11, 13, 17
Setscrew	
20310	19
Shield	
38754	17
Shipping Plug	
38149	49
Shoulder Bolt	
27229	29
Shoulder Screw	
29277	9
34288 †	31
39432 †	31
Siphon Break Kit	
562P3	37, 39
Slide	
26493	35
Spade Terminal	
00112	47
00119	47
00121	45
00220	47
Special Screw	
27030	35
Speed Nut	
36020	23
Speed Switch	
27762	19
Splined Insert	
29728 †	31
Spring Hook	
289P4	49
Standpipe Adapter	
36878	37
Sticker	
500049	33
Strain Relief	
38384	23
Support Barrel	
56534	23
Switch	
33445	25
504570	11, 13
Switch Holder	
37629	25

T

Terminal	
00116	47
00117	47
Terminal And Housing Assembly	
00234	47

Terminal Block	
23033	47
23041	47
26163	47
26301	47
26302	47
26708	47
Terminal Extractor Tool	
283P4	45
Timer	
31111P	9
34601P	9
34602	9
Timer Assembly	
28716	7
Timer Bracket	
35249	9
Timer Case	
37733W	7
37733*	15, 19, 21
Timer Harness	
29279	52
29281	52
34092	52
34175	52
38128	52
Timer Harness (Card Reader)	
38191	52
Timer Harness (Security Box)	
38026	52
Timer Knob Assembly	
26256	7
Timer Plate	
31864W	7
39491*	15
Torx Bit Holder	
24161	49
Transmission Assembly	
38826P	33, 35
Transmission Case	
33223	35
Transmission Cover	
37471	35
Transmission Oil	
27243P	35
Transmission Pin Tool	
305P4	49
Tub Cover	
37502	33
38573	33
Tub-to-Pump Hose	
38351	37, 39
12 Gauge Wire	
45380	44
T15 Tamper Resistant Bit	
281P4	49
T25 Tamper Resistant Bit	
282P4	49

V

Vinyl Washer	
23225	17

W

Warning Sticker	
24903	23
Wash Temperature Switch	
81799	19
Washer	
23225	7
26509	35, 41
27015	41
29260	35
30627	7, 15, 17
35092	35
35535	41
37772	29
39249	33
52549	29
81392	29
Washer Shipping Brace	
39366	49
Washtub	
38668P	31
39388P	31
Water Inlet Channel	
38154	33
Weldment And Bearing Assembly	
39254	33
Weldment and Bearing Assembly	
39254	41
Wire Clip	
504034	47
51291	47
Wire Tie	
55881	47